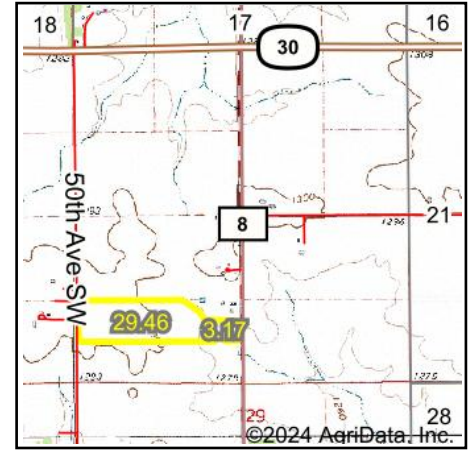
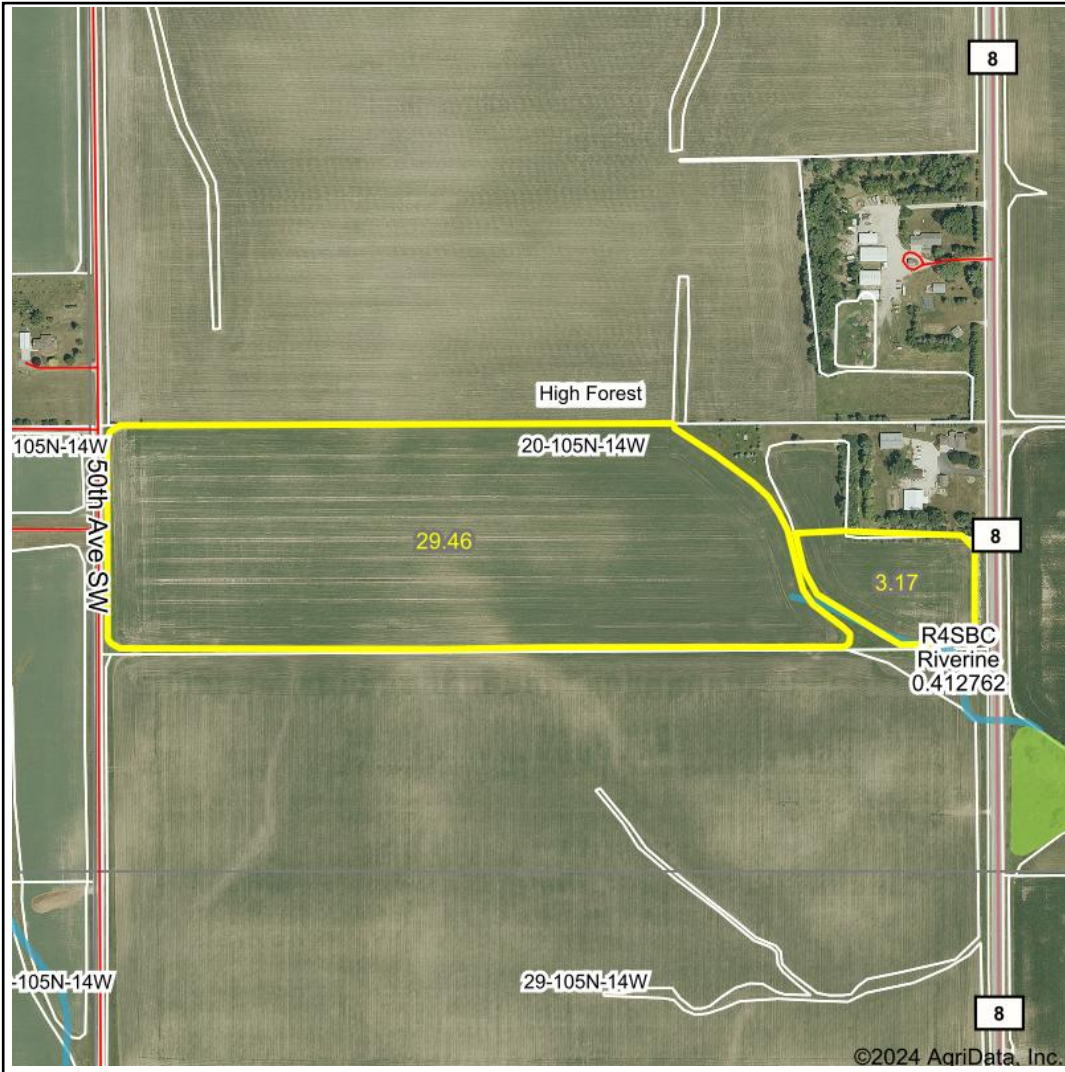


Wetlands Map



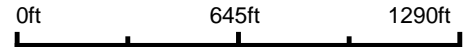
State: **Minnesota**
 Location: **20-105N-14W**
 County: **Olmsted**
 Township: **High Forest**
 Date: **7/24/2024**



Maps Provided By:



© AgriData, Inc. 2023 www.AgriDataInc.com



Classification Code	Type	Acres
R4SBC	Riverine	0.10
	Total Acres	0.10

Data Source: National Wetlands Inventory website. U.S. DoI, Fish and Wildlife Service, Washington, D.C. <http://www.fws.gov/wetlands/>