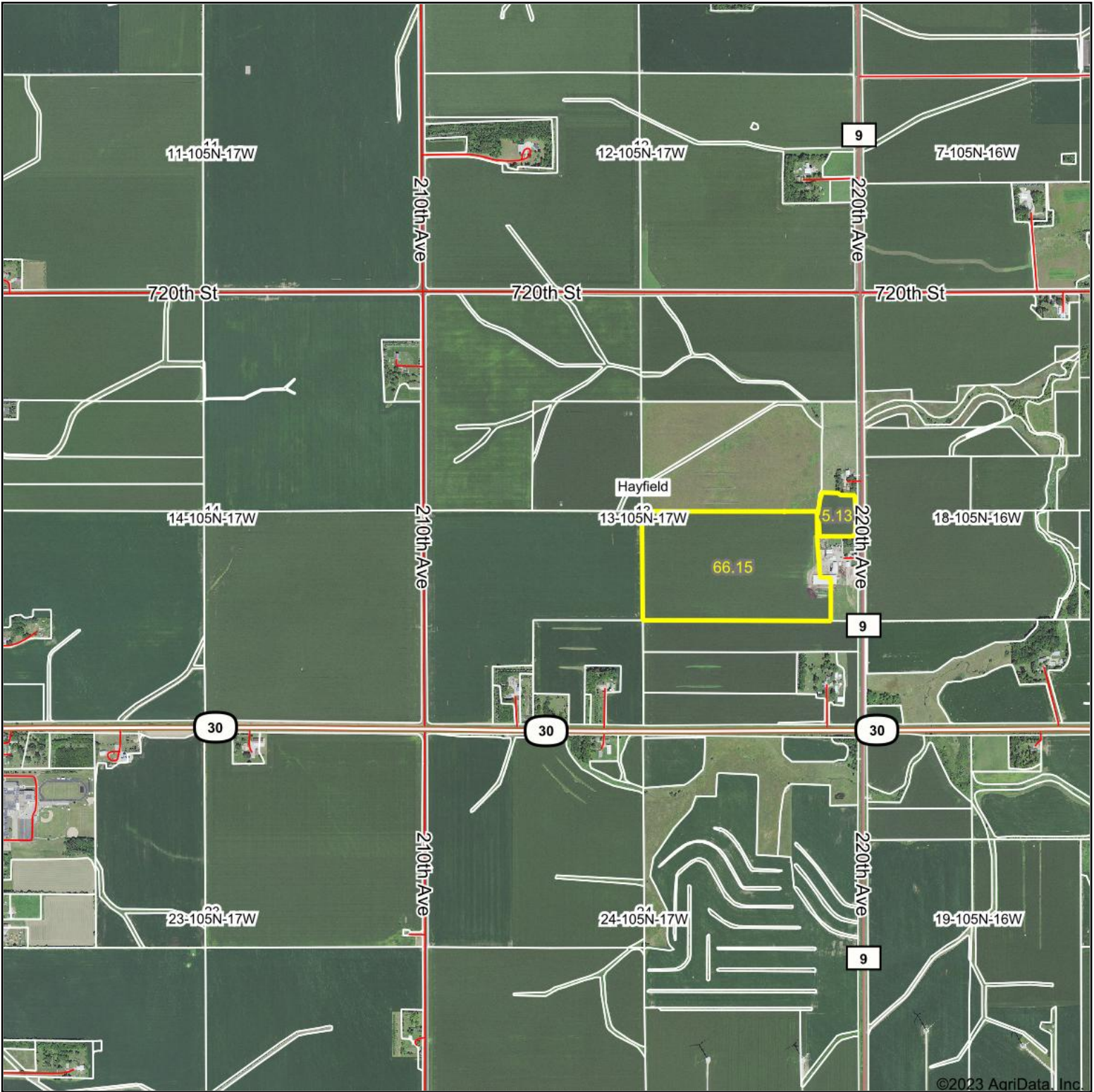
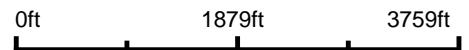


# Aerial Map



©2023 AgriData, Inc.

Boundary Center: 43° 53' 52.53, -92° 48' 14.38



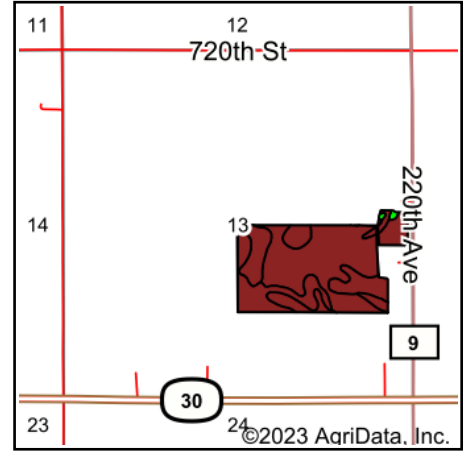
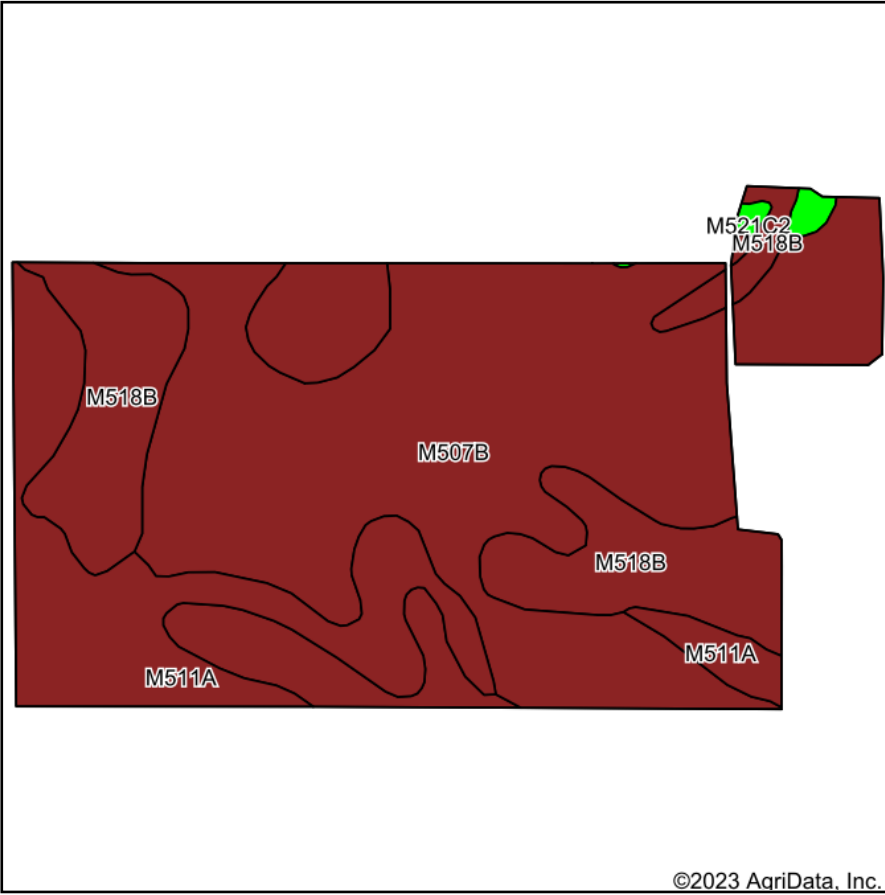
Maps Provided By:  
**surety**  
CUSTOMIZED ONLINE MAPPING  
© AgriData, Inc. 2023 www.AgriDataInc.com

**13-105N-17W**  
**Dodge County**  
**Minnesota**



8/11/2023

# Soils Map



State: **Minnesota**  
 County: **Dodge**  
 Location: **13-105N-17W**  
 Township: **Hayfield**  
 Acres: **71.28**  
 Date: **8/11/2023**



Maps Provided By:



Soils data provided by USDA and NRCS.

Area Symbol: MN039, Soil Area Version: 19

Code	Soil Description	Acres	Percent of field	PI Legend	Non-Irr Class *c	Productivity Index	*n NCCPI Overall	*n NCCPI Corn	*n NCCPI Small Grains	*n NCCPI Soybeans
M507B	Marquis silt loam, 2 to 6 percent slopes	38.08	53.4%		lle	99	89	89	70	78
M518B	Clyde-Floyd complex, 1 to 4 percent slopes	19.22	27.0%		llw	92	87	83	68	87
M511A	Readlyn silt loam, 1 to 3 percent slopes	13.46	18.9%		lw	100	79	79	54	65
M521C2	Kenyon silt loam, 6 to 12 percent slopes, moderately eroded	0.52	0.7%		llle	79	78	78	58	60
<b>Weighted Average</b>					<b>1.82</b>	<b>97.2</b>	<b>*n 86.5</b>	<b>*n 85.4</b>	<b>*n 66.4</b>	<b>*n 77.8</b>

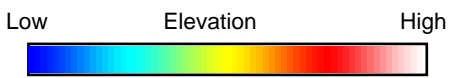
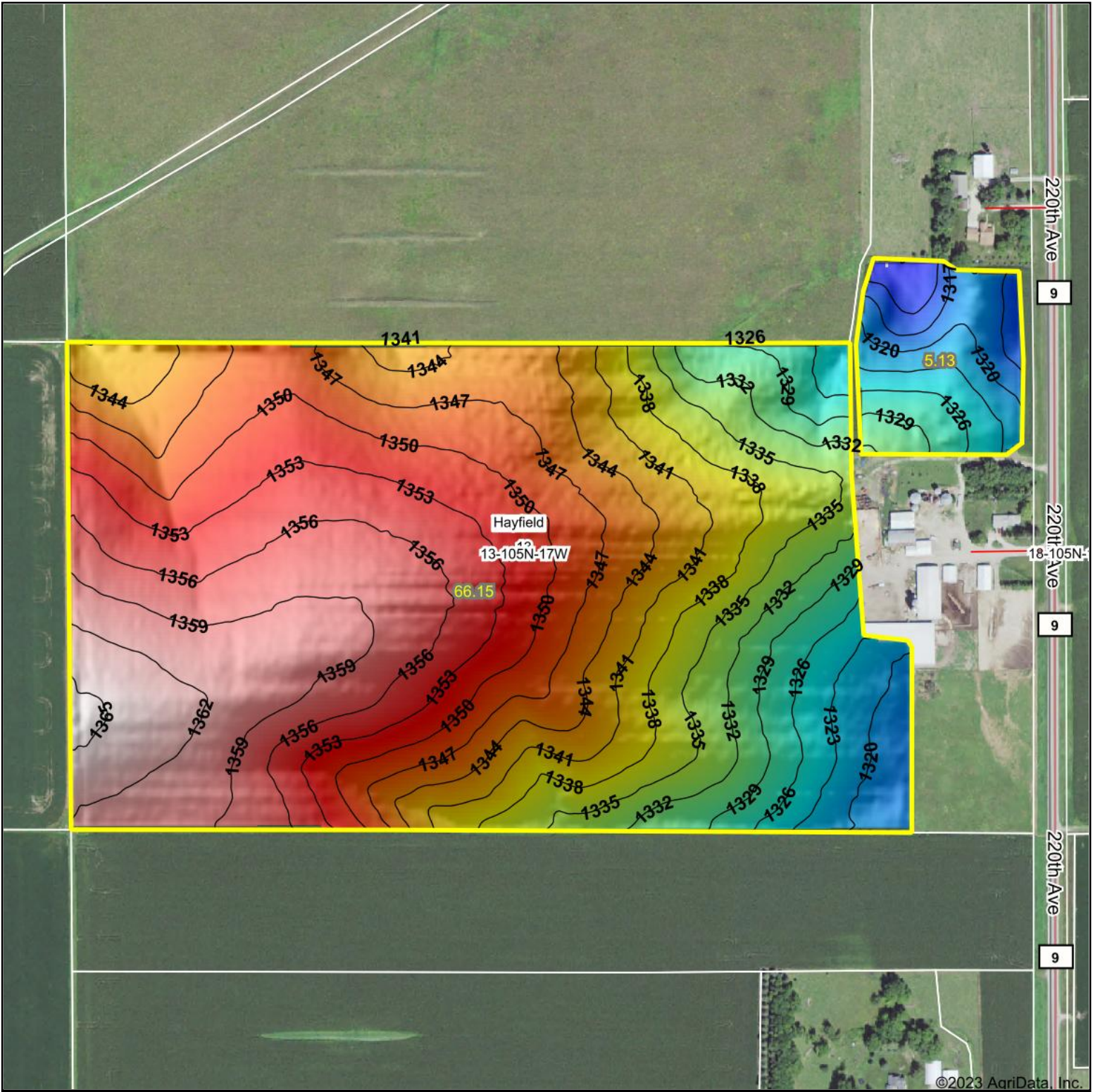
\*n: The aggregation method is "Weighted Average using all components"

\*c: Using Capabilities Class Dominant Condition Aggregation Method

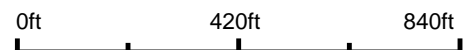
Soils data provided by USDA and NRCS.



# Topography Hillshade



Source: USGS 3 meter dem



Interval(ft): 3

Min: 1,310.9

Max: 1,365.9

Range: 55.0

Average: 1,343.9

Standard Deviation: 12.7 ft



8/11/2023

**13-105N-17W**  
**Dodge County**  
**Minnesota**

Boundary Center: 43° 53' 52.53, -92° 48' 14.38



Maps Provided By:

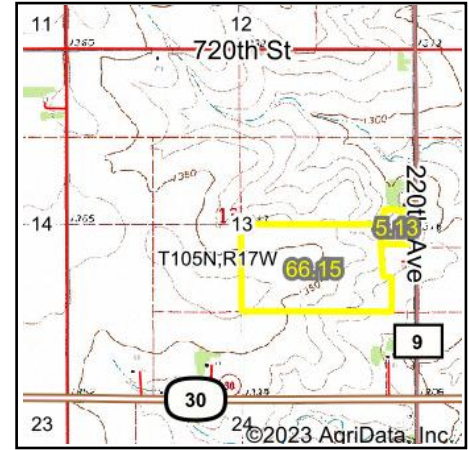
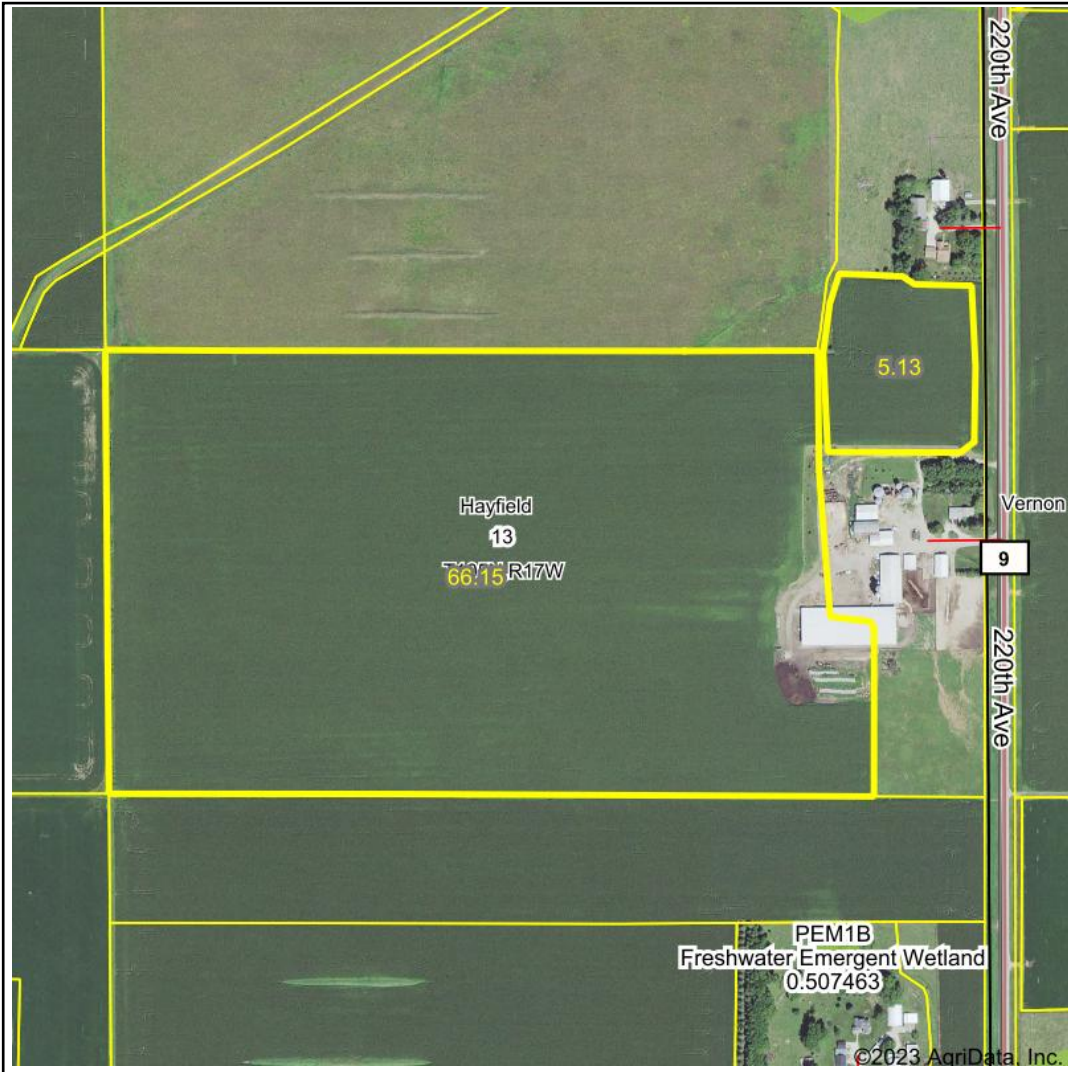


© AgriData, Inc. 2023 www.AgriDataInc.com

Field borders provided by Farm Service Agency as of 5/21/2008.



# Wetlands Map



State: **Minnesota**  
 Location: **13-105N-17W**  
 County: **Dodge**  
 Township: **Hayfield**  
 Date: **8/11/2023**



Maps Provided By:



© AgriData, Inc. 2023

www.AgriDataInc.com



0ft 655ft 1309ft

Classification Code	Type	Acres
		Total Acres 0.00

Data Source: National Wetlands Inventory website. U.S. DoI, Fish and Wildlife Service, Washington, D.C. <http://www.fws.gov/wetlands/>