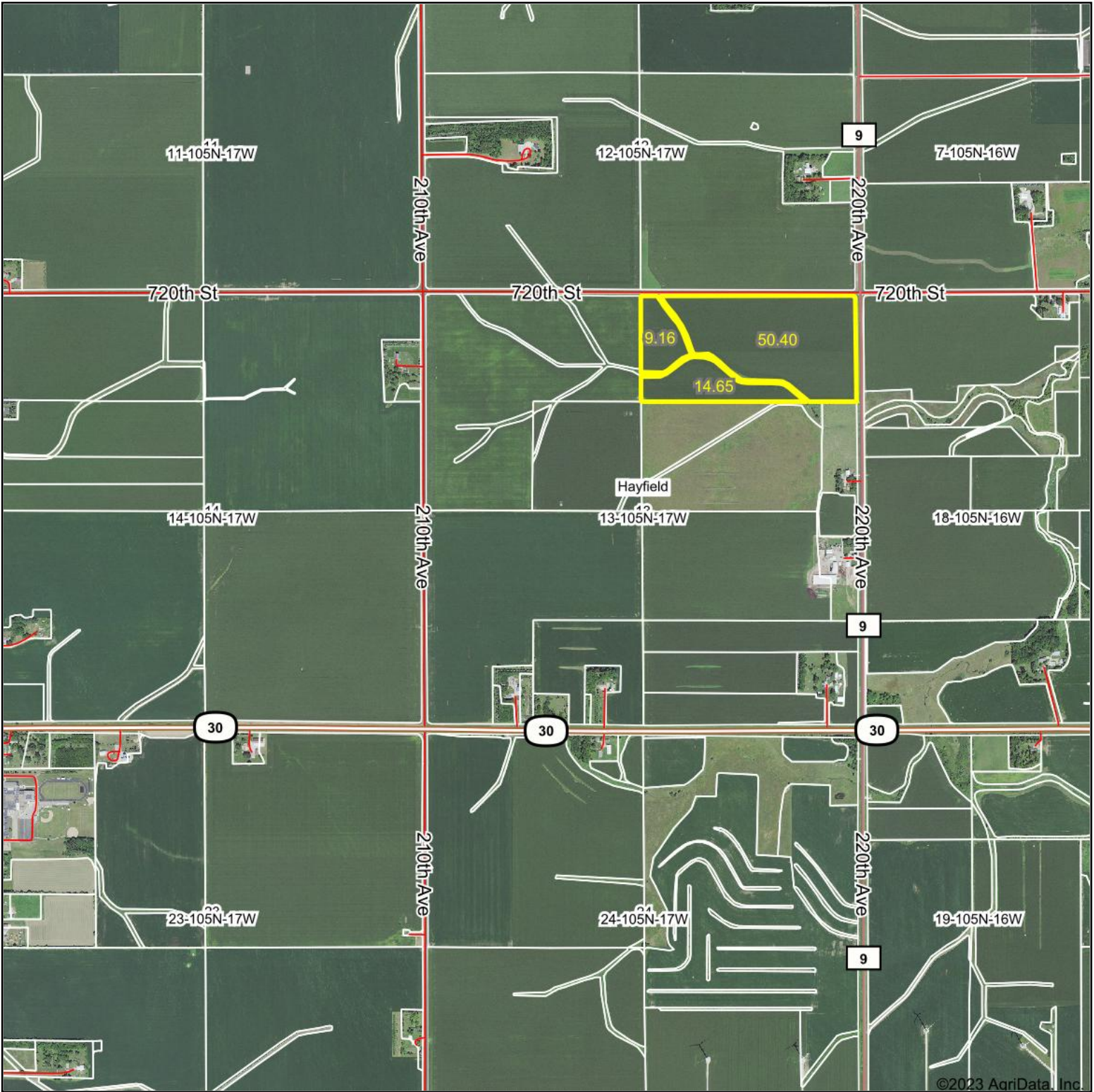
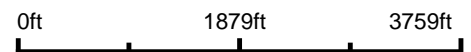


Aerial Map



Boundary Center: 43° 54' 17.38, -92° 48' 14.35



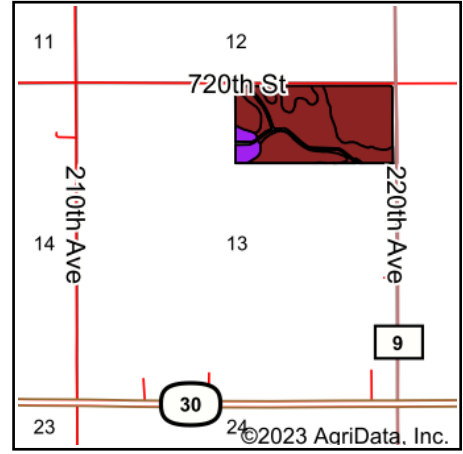
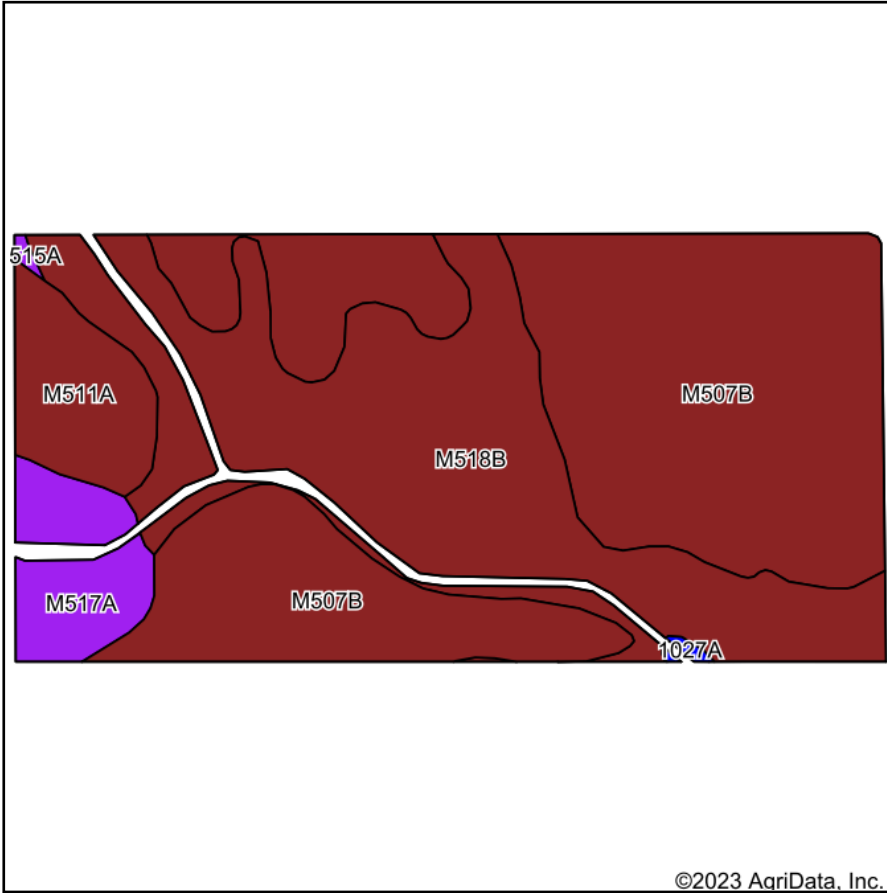
13-105N-17W
Dodge County
Minnesota



Maps Provided By:
surety
CUSTOMIZED ONLINE MAPPING
© AgriData, Inc. 2023 www.AgriDataInc.com

8/11/2023

Soils Map



State: **Minnesota**
 County: **Dodge**
 Location: **13-105N-17W**
 Township: **Hayfield**
 Acres: **74.21**
 Date: **8/11/2023**



Maps Provided By:



Soils data provided by USDA and NRCS.

©2023 AgriData, Inc.

© AgriData, Inc. 2023

www.AgriDataInc.com

Area Symbol: MN039, Soil Area Version: 19

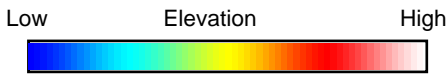
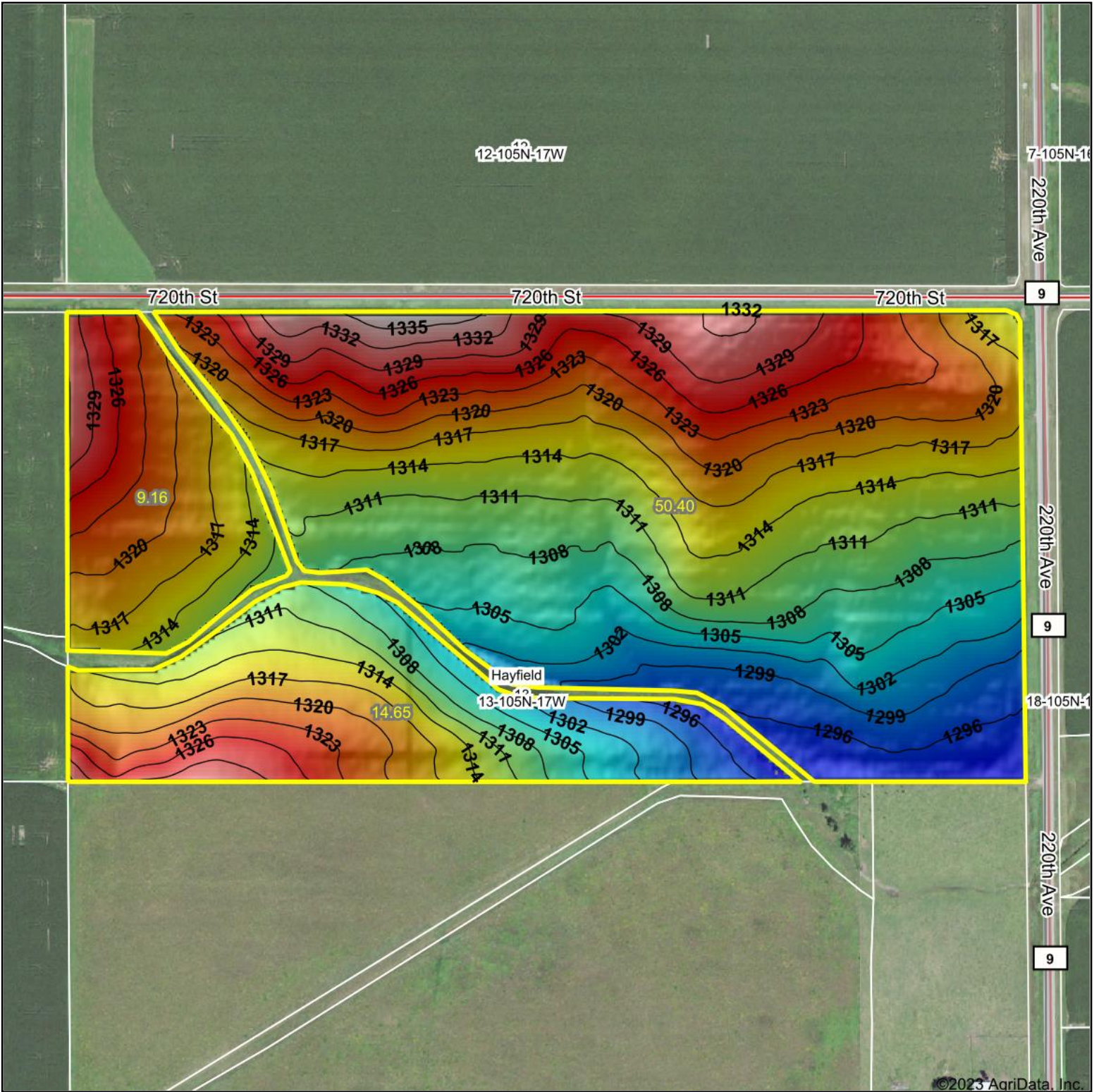
Code	Soil Description	Acres	Percent of field	PI Legend	Non-Irr Class *c	Productivity Index	*n NCCPI Overall	*n NCCPI Corn	*n NCCPI Small Grains	*n NCCPI Soybeans
M507B	Marquis silt loam, 2 to 6 percent slopes	38.84	52.3%		Ile	99	89	89	70	78
M518B	Clyde-Floyd complex, 1 to 4 percent slopes	26.17	35.3%		Ilw	92	87	83	68	87
M511A	Readlyn silt loam, 1 to 3 percent slopes	4.67	6.3%		Iw	100	79	79	54	65
M517A	Clyde silty clay loam, 0 to 3 percent slopes	4.27	5.8%		Ilw	86	90	90	74	85
1027A	Coland, frequently flooded-Spillville, occasionally flooded complex, 0 to 2 percent slopes	0.14	0.2%		Vw	31	75	75	33	60
M515A	Tripoli clay loam, 0 to 2 percent slopes	0.12	0.2%		Ilw	87	67	67	44	62
Weighted Average					1.94	95.7	*n 87.7	*n 86.3	*n 68.4	*n 80.7

*n: The aggregation method is "Weighted Average using all components"

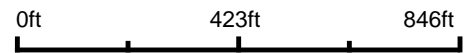
*c: Using Capabilities Class Dominant Condition Aggregation Method

Soils data provided by USDA and NRCS.

Topography Hillshade



Source: USGS 3 meter dem
 Interval(ft): 3
 Min: 1,293.0
 Max: 1,337.1
 Range: 44.1
 Average: 1,314.3
 Standard Deviation: 9.68 ft



13-105N-17W
Dodge County
Minnesota

Boundary Center: 43° 54' 17.38, -92° 48' 14.35



Maps Provided By:

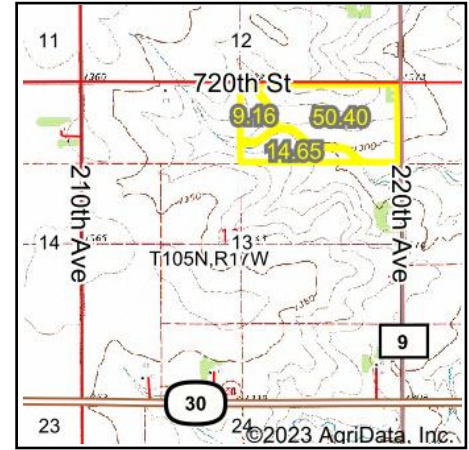
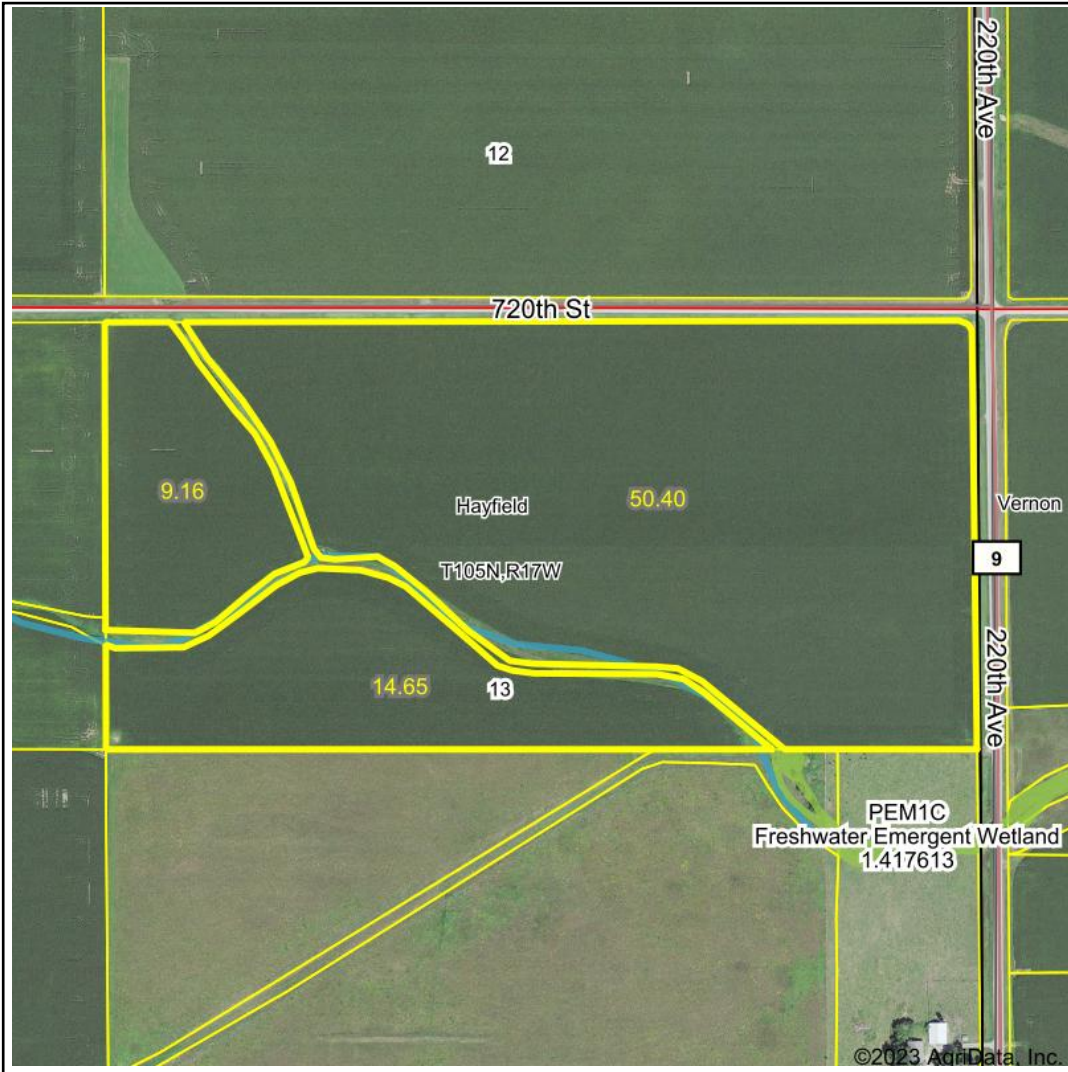


© AgriData, Inc. 2023 www.AgriDataInc.com

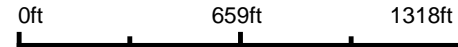
Field borders provided by Farm Service Agency as of 5/21/2008.

©2023 AgriData, Inc.

Wetlands Map



State: Minnesota
Location: 13-105N-17W
County: Dodge
Township: Hayfield
Date: 8/11/2023



Classification Code	Type	Acres
R4SBC	Riverine	0.52
PEM1C	Freshwater Emergent Wetland	0.00
Total Acres		0.52

Data Source: National Wetlands Inventory website. U.S. DoI, Fish and Wildlife Service, Washington, D.C. <http://www.fws.gov/wetlands/>