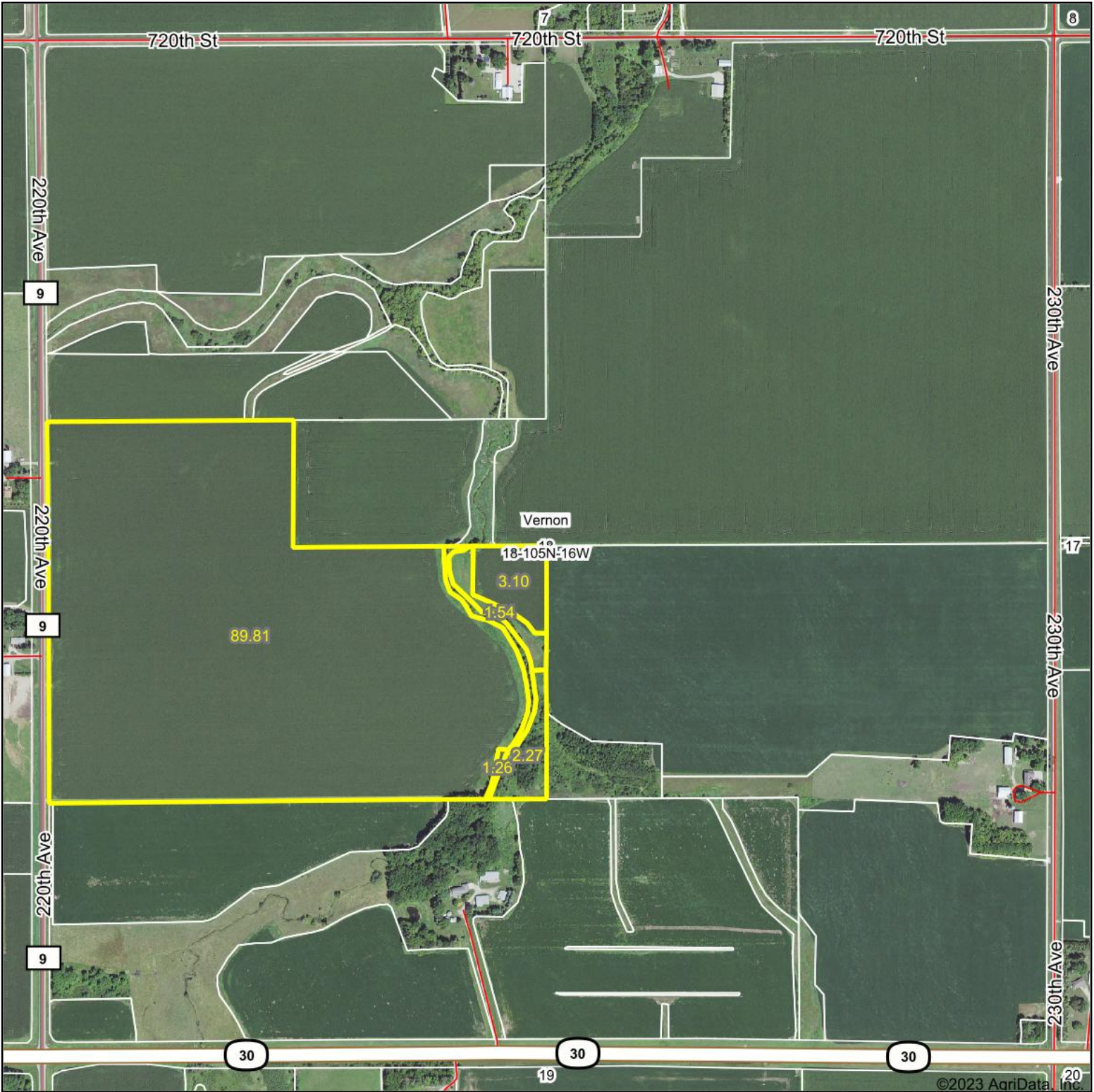
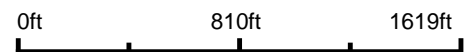


Aerial Map



©2023 AgriData, Inc.

Boundary Center: 43° 53' 54.65, -92° 47' 37.49



18-105N-16W
Dodge County
Minnesota



8/11/2023



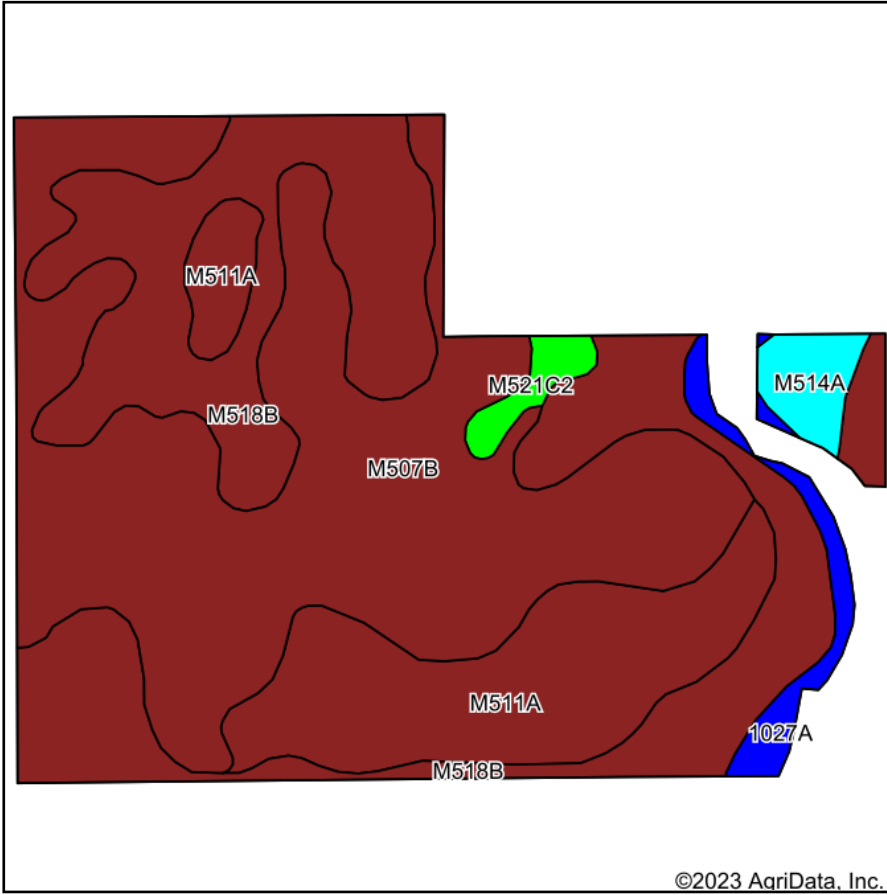
Maps Provided By:



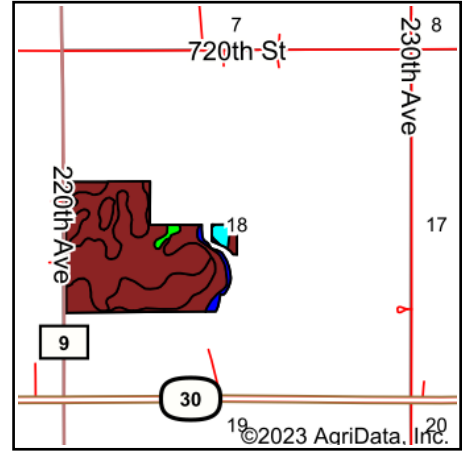
© AgriData, Inc. 2023 www.AgriDataInc.com

Field borders provided by Farm Service Agency as of 5/21/2008.

Soils Map



Soils data provided by USDA and NRCS.



State: **Minnesota**
 County: **Dodge**
 Location: **18-105N-16W**
 Township: **Vernon**
 Acres: **92.91**
 Date: **8/11/2023**



Maps Provided By:



© AgriData, Inc. 2023

www.AgriDataInc.com



Area Symbol: MN039, Soil Area Version: 19

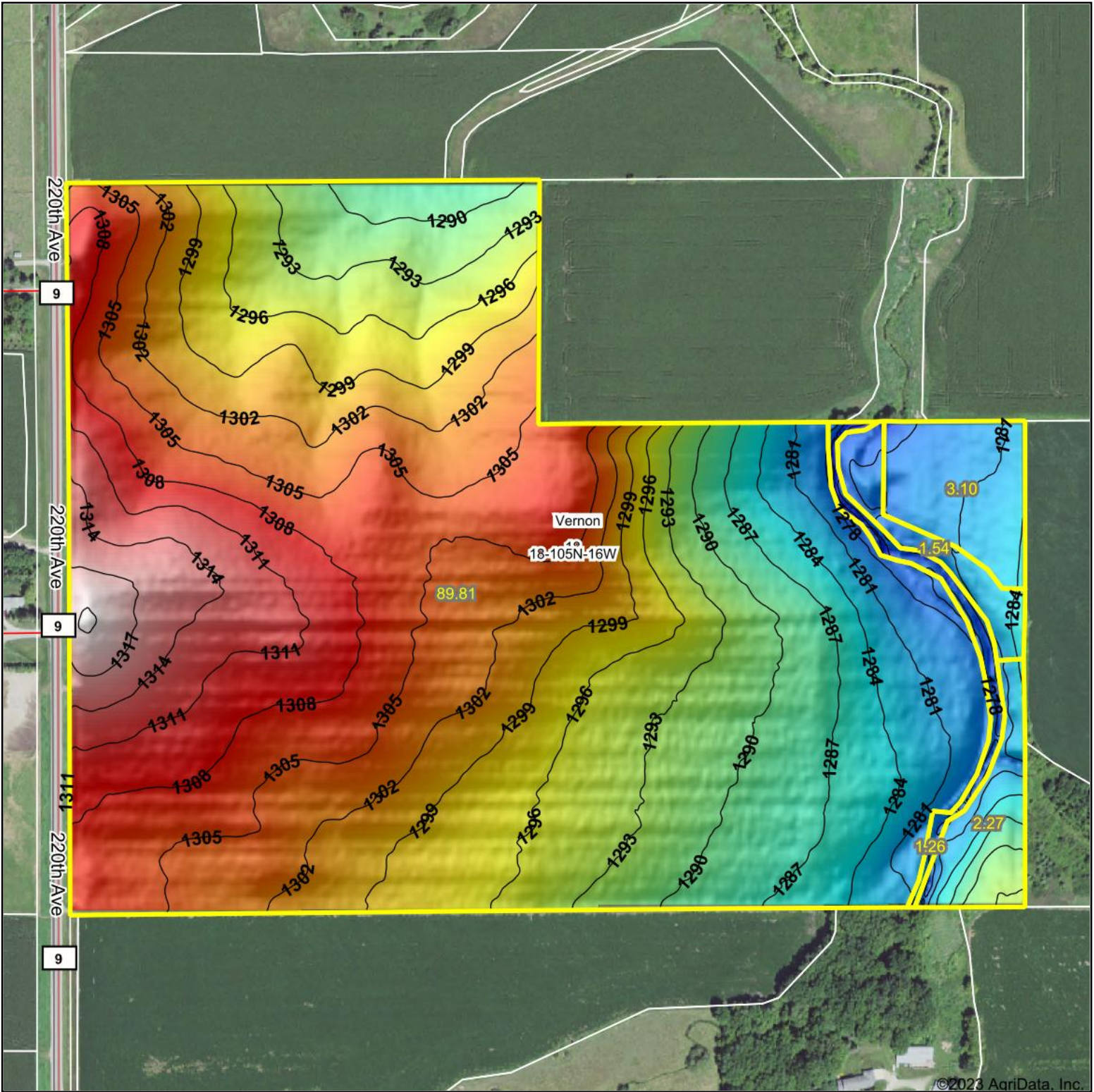
Code	Soil Description	Acres	Percent of field	PI Legend	Non-Irr Class *c	Productivity Index	*n NCCPI Overall	*n NCCPI Corn	*n NCCPI Small Grains	*n NCCPI Soybeans	
M507B	Marquis silt loam, 2 to 6 percent slopes	40.15	43.2%		Ile	99	89	89	70	78	
M518B	Clyde-Floyd complex, 1 to 4 percent slopes	31.50	33.9%		IIw	92	87	83	68	87	
M511A	Readlyn silt loam, 1 to 3 percent slopes	15.89	17.1%		Iw	100	79	79	54	65	
1027A	Coland, frequently flooded-Spillville, occasionally flooded complex, 0 to 2 percent slopes	2.31	2.5%		Vw	31	75	75	33	60	
M514A	Lawler-Marshan complex, 0 to 2 percent slopes	1.88	2.0%		IIs	69	75	75	59	51	
M521C2	Kenyon silt loam, 6 to 12 percent slopes, moderately eroded	1.18	1.3%		IIIe	79	78	78	58	60	
Weighted Average						1.92	94.2	*n 85.8	*n 84.5	*n 65.3	*n 77.6

*n: The aggregation method is "Weighted Average using all components"

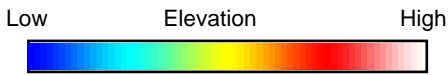
*c: Using Capabilities Class Dominant Condition Aggregation Method

Soils data provided by USDA and NRCS.

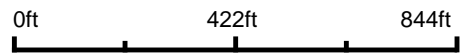
Topography Hillshade



©2023 AgriData, Inc.



Source: USGS 3 meter dem



Interval(ft): 3

Min: 1,272.8

Max: 1,320.4

Range: 47.6

Average: 1,297.4

Standard Deviation: 10.1 ft



8/11/2023

18-105N-16W
Dodge County
Minnesota

Boundary Center: 43° 53' 54.65, -92° 47' 37.49



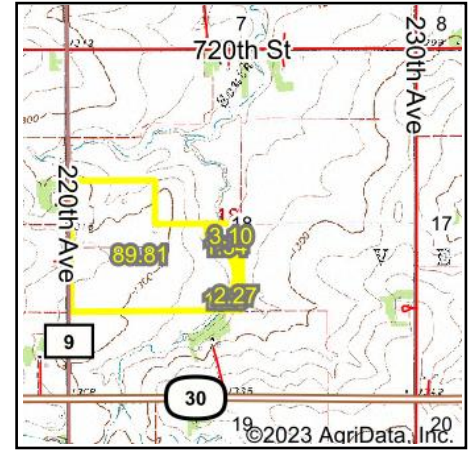
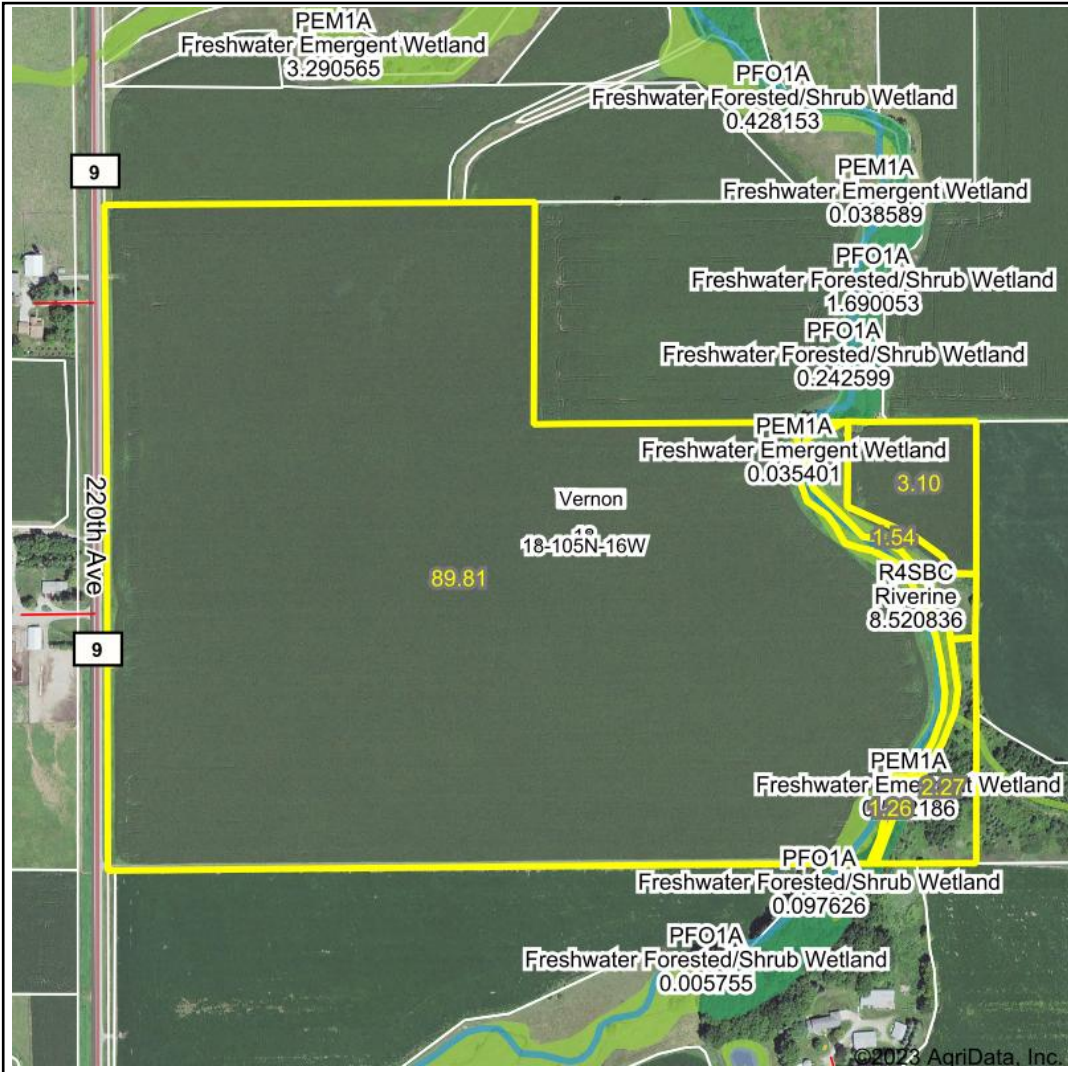
Maps Provided By:



© AgriData, Inc. 2023 www.AgriDataInc.com

Field borders provided by Farm Service Agency as of 5/21/2008.

Wetlands Map



State: Minnesota
Location: 18-105N-16W
County: Dodge
Township: Vernon
Date: 8/11/2023



Classification Code	Type	Acres
PEM1A	Freshwater Emergent Wetland	2.22
R4SBC	Riverine	0.71
PFO1A	Freshwater Forested/Shrub Wetland	0.32
PEM1C	Freshwater Emergent Wetland	0.06
Total Acres		3.31

Data Source: National Wetlands Inventory website. U.S. DoI, Fish and Wildlife Service, Washington, D.C. <http://www.fws.gov/wetlands/>