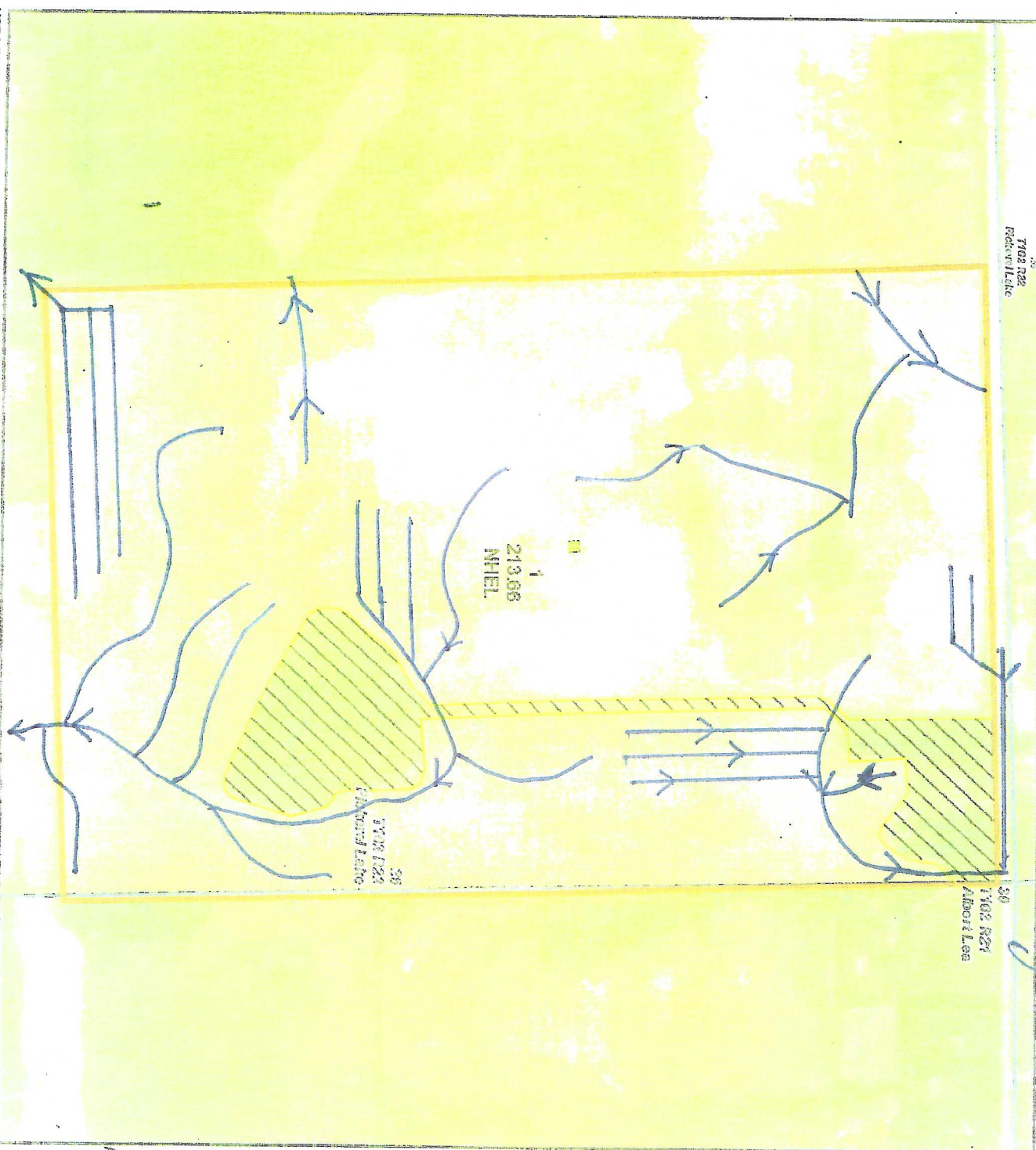


Martha Ferguson

Farm 8677



Tract 2093

2014 Program Year

Map Created May 10, 2014

Common Land Use

□ Cropland

▨ Noncropland

▨ Conservation Reserve Program

○ Wetland Determination Indicators

△ Restricted Use

□ Limited Restrictions

□ Exempt from Conservation Compliance Provisions

□ Tract Boundary

□ Section Line



1:7,042

Unless otherwise noted: crops are non-irrigated.

Corn = yellow for grain

Soybeans = common soybeans for grain

Wheat = HRS for grain or HRW for grain

Oats and Bailey = Spring for grain

Rye = for grain

Peas = process

Alfalfa, Mixed Forage AGM, GMA, GSS = for forage

Beans = Dry Edible

Canola = Spring for seed

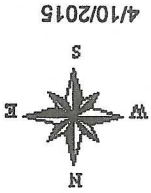
Sunflower = oil or non-oil for grain

USDA FSA maps are for FSA Program administration only. This map does not represent a legal survey or reflect actual ownership; either it depicts the information provided directly from the producer or under the 2013 MAPS program. The producer or owner of the land is responsible for the accuracy of the information. The USDA Farm Service Agency assumes no responsibility for actual or consequential damage incurred as a result of any user's reliance on the data under FSA Programs. Wetland boundaries do not represent the size, shape, or specific determination of the area. Refer to your original determination (WPA-025 and sheeted maps) for exact boundaries and determinations or contact WPA-025.

Field borders provided by Farm Service Agency as of 5/21/2008. Aerial photography provided by Aerial Photography Field Office.

Maps Provided By:
surety
CUSTOMIZED ONLINE MAPPING
© AgriData, Inc. 2014
www.AgriDataInc.com

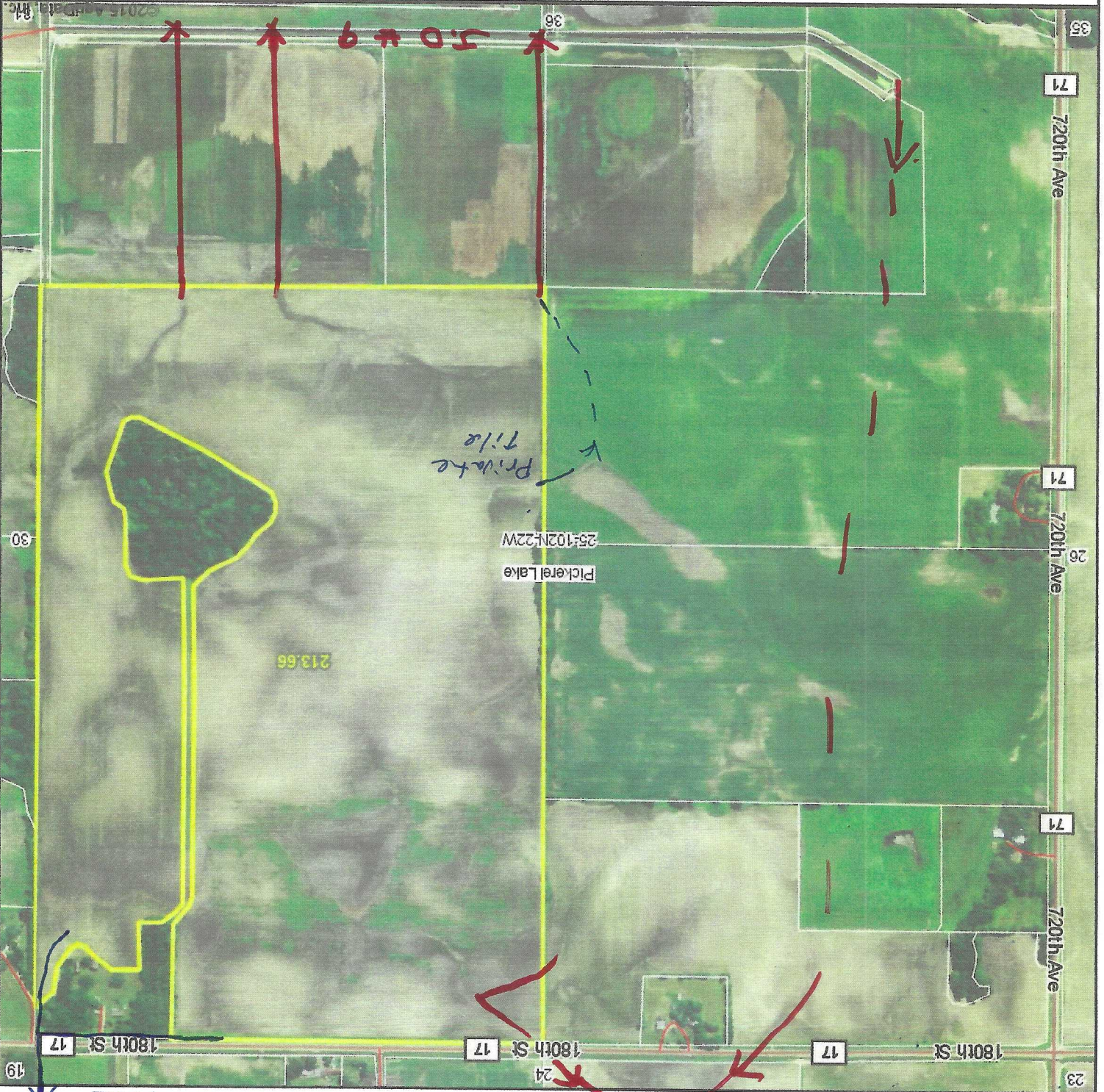
25-102N-22W
Freeborn County
Minnesota



scale: 9266

map center: 43.608018, -93.418594

4/10/2015



Aerial Map

5.049

Private Tile

Private Tile

Pickeral Lake
25-102N-22W

213.66

35

71

720th Ave

71

720th Ave

26

71

720th Ave

23

180th St

17

180th St

17

180th St

19

24

30

36

2015 AgriData, Inc.

