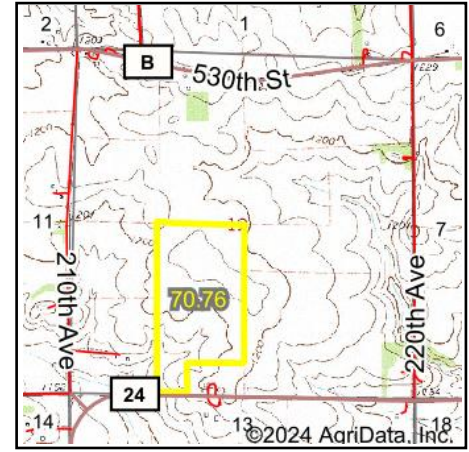
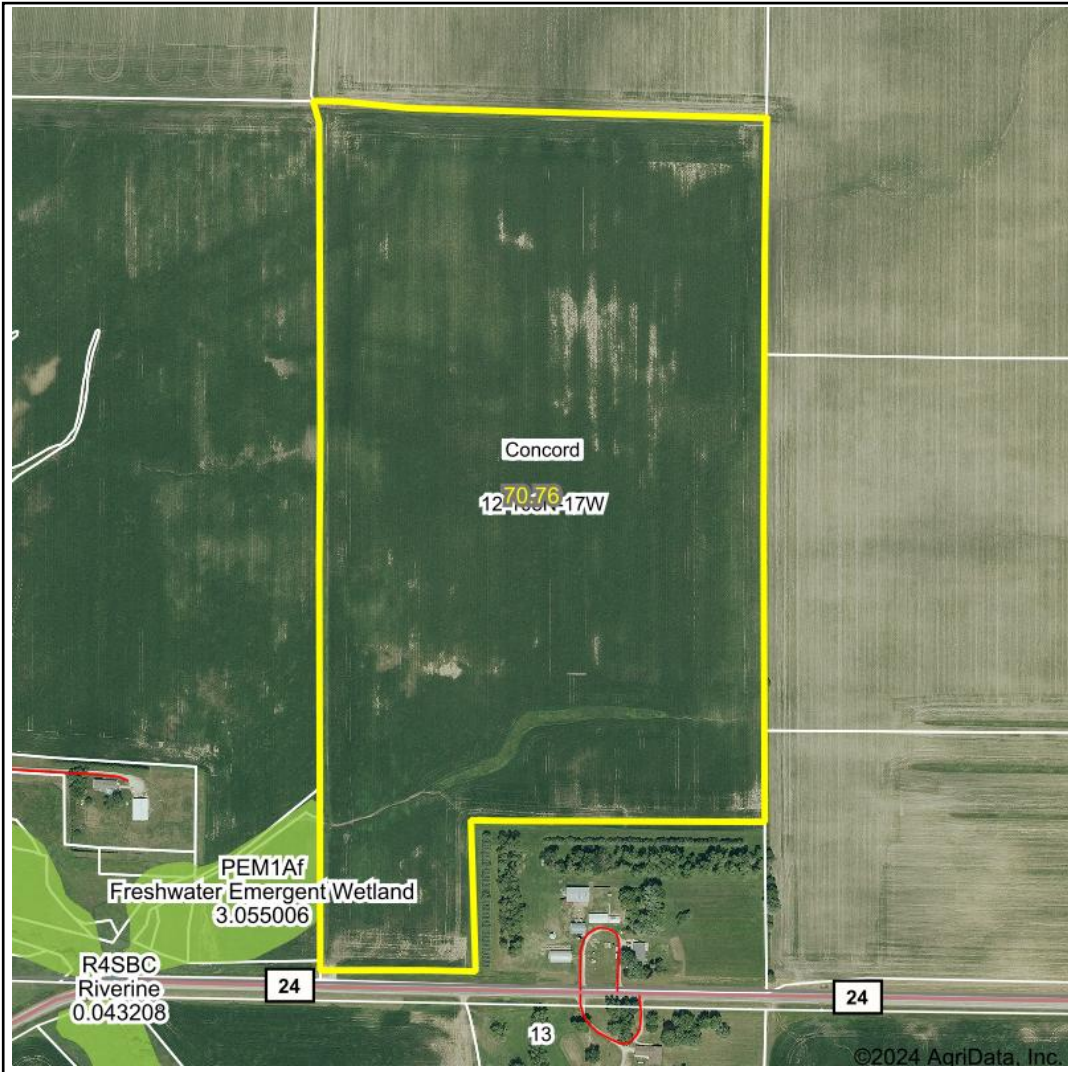


Wetlands Map



State: **Minnesota**
 Location: **12-108N-17W**
 County: **Dodge**
 Township: **Concord**
 Date: **7/24/2024**


HIGH POINT
 LAND COMPANY
 Maps Provided By:

surety
 CUSTOMIZED ONLINE MAPPING
© AgriData, Inc. 2023 www.AgriDataInc.com



Classification Code	Type	Acres
PEM1Af	Freshwater Emergent Wetland	0.06
Total Acres		0.06

Data Source: National Wetlands Inventory website. U.S. DoI, Fish and Wildlife Service, Washington, D.C. <http://www.fws.gov/wetlands/>