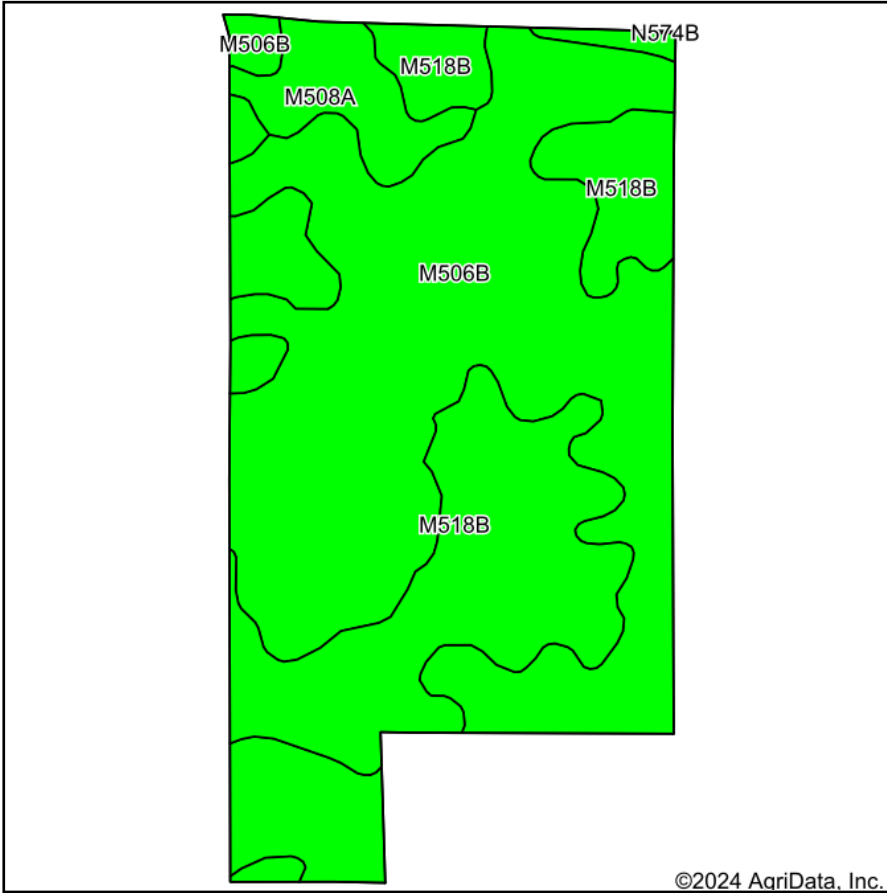
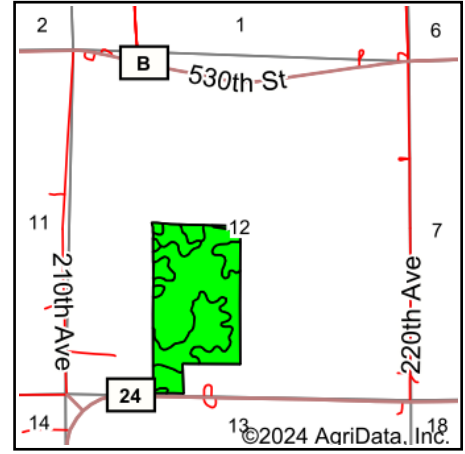


Soils Map



Soils data provided by USDA and NRCS.



State: **Minnesota**
 County: **Dodge**
 Location: **12-108N-17W**
 Township: **Concord**
 Acres: **70.76**
 Date: **7/24/2024**



Maps Provided By:



© AgriData, Inc. 2023

www.AgriDataInc.com



Area Symbol: MN039, Soil Area Version: 20

| Code | Soil Description | Acres | Percent of field | PI Legend | Non-Irr Class *c | Productivity Index | *n NCCPI Overall | *n NCCPI Corn | *n NCCPI Small Grains | *n NCCPI Soybeans | |
|-------------------------|--|-------|------------------|-----------|------------------|--------------------|------------------|----------------|-----------------------|-------------------|--------------|
| M506B | Kasson silt loam, 2 to 6 percent slopes | 43.22 | 61.1% | | Ile | 95 | 79 | 79 | 62 | 63 | |
| M518B | Clyde-Floyd complex, 1 to 4 percent slopes | 23.69 | 33.5% | | IIw | 92 | 87 | 84 | 78 | 87 | |
| M508A | Oran silt loam, 1 to 4 percent slopes | 3.85 | 5.4% | | Iw | 95 | 79 | 79 | 63 | 63 | |
| Weighted Average | | | | | | 1.95 | 94 | *n 81.7 | *n 80.7 | *n 67.4 | *n 71 |

*n: The aggregation method is "Weighted Average using all components"

*c: Using Capabilities Class Dominant Condition Aggregation Method

Soils data provided by USDA and NRCS.