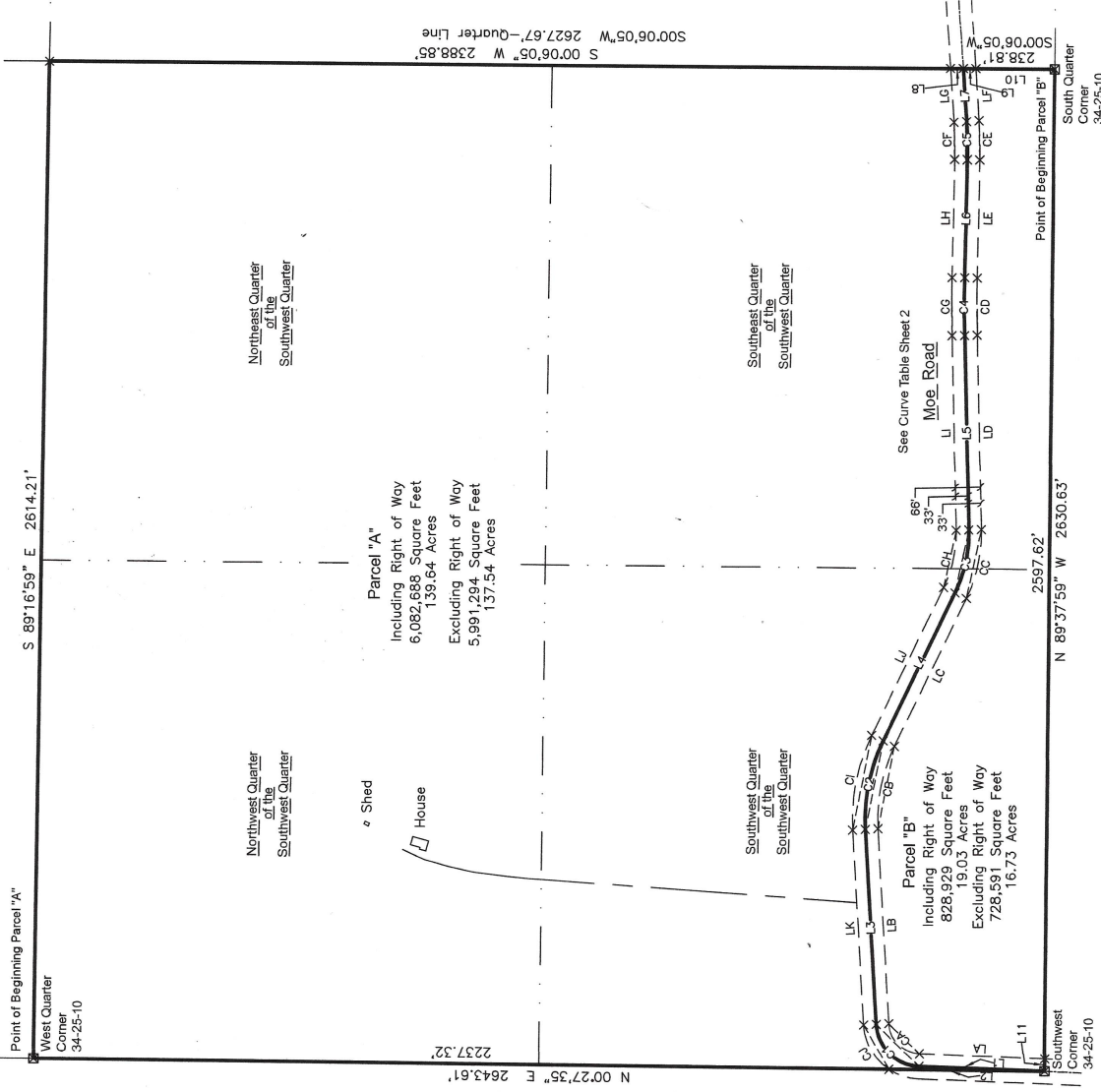


Map of Survey

The Southwest Quarter of Section 34, Township 25 North, Range 10 West,
Town of Drammen, Eau Claire County, Wisconsin.



- LEGEND**
- ☒ FOUND EAU CLAIRE COUNTY ALUMINUM MONUMENT - Tie Sheets on File (See County Surveyors Office for Section Breakdown Information)
 - ✕ COMPUTED POSITION - MONUMENTS WAIVED



COURSE TABLE

LINE	BEARING	DISTANCE
L1	N 01°59'42" E	377.96'
L2	N 06°27'35" E	406.29'
L3	N 86°35'09" E	512.05'
L4	S 64°18'57" E	430.91'
L5	N 88°33'20" E	511.73'
L6	S 86°55'45" E	310.93'
L7	N 86°04'07" E	140.07'
L8	S 00°06'05" W	33.08'
L9	S 00°06'05" W	33.08'
L10	S 00°06'05" W	205.73'
L11	N 89°16'59" W	35.09'
L12	N 89°16'59" W	35.09'
L13	N 89°16'59" W	35.09'
L14	N 89°16'59" W	35.09'
L15	N 89°16'59" W	35.09'
L16	N 89°16'59" W	35.09'
L17	N 89°16'59" W	35.09'
L18	N 89°16'59" W	35.09'
L19	N 89°16'59" W	35.09'
L20	N 89°16'59" W	35.09'
L21	N 89°16'59" W	35.09'
L22	N 89°16'59" W	35.09'
L23	N 89°16'59" W	35.09'
L24	N 89°16'59" W	35.09'
L25	N 89°16'59" W	35.09'
L26	N 89°16'59" W	35.09'
L27	N 89°16'59" W	35.09'
L28	N 89°16'59" W	35.09'
L29	N 89°16'59" W	35.09'
L30	N 89°16'59" W	35.09'
L31	N 89°16'59" W	35.09'
L32	N 89°16'59" W	35.09'
L33	N 89°16'59" W	35.09'
L34	N 89°16'59" W	35.09'
L35	N 89°16'59" W	35.09'
L36	N 89°16'59" W	35.09'
L37	N 89°16'59" W	35.09'
L38	N 89°16'59" W	35.09'
L39	N 89°16'59" W	35.09'
L40	N 89°16'59" W	35.09'
L41	N 89°16'59" W	35.09'
L42	N 89°16'59" W	35.09'
L43	N 89°16'59" W	35.09'
L44	N 89°16'59" W	35.09'
L45	N 89°16'59" W	35.09'
L46	N 89°16'59" W	35.09'
L47	N 89°16'59" W	35.09'
L48	N 89°16'59" W	35.09'
L49	N 89°16'59" W	35.09'
L50	N 89°16'59" W	35.09'
L51	N 89°16'59" W	35.09'
L52	N 89°16'59" W	35.09'
L53	N 89°16'59" W	35.09'
L54	N 89°16'59" W	35.09'
L55	N 89°16'59" W	35.09'
L56	N 89°16'59" W	35.09'
L57	N 89°16'59" W	35.09'
L58	N 89°16'59" W	35.09'
L59	N 89°16'59" W	35.09'
L60	N 89°16'59" W	35.09'
L61	N 89°16'59" W	35.09'
L62	N 89°16'59" W	35.09'
L63	N 89°16'59" W	35.09'
L64	N 89°16'59" W	35.09'
L65	N 89°16'59" W	35.09'
L66	N 89°16'59" W	35.09'
L67	N 89°16'59" W	35.09'
L68	N 89°16'59" W	35.09'
L69	N 89°16'59" W	35.09'
L70	N 89°16'59" W	35.09'
L71	N 89°16'59" W	35.09'
L72	N 89°16'59" W	35.09'
L73	N 89°16'59" W	35.09'
L74	N 89°16'59" W	35.09'
L75	N 89°16'59" W	35.09'
L76	N 89°16'59" W	35.09'
L77	N 89°16'59" W	35.09'
L78	N 89°16'59" W	35.09'
L79	N 89°16'59" W	35.09'
L80	N 89°16'59" W	35.09'
L81	N 89°16'59" W	35.09'
L82	N 89°16'59" W	35.09'
L83	N 89°16'59" W	35.09'
L84	N 89°16'59" W	35.09'
L85	N 89°16'59" W	35.09'
L86	N 89°16'59" W	35.09'
L87	N 89°16'59" W	35.09'
L88	N 89°16'59" W	35.09'
L89	N 89°16'59" W	35.09'
L90	N 89°16'59" W	35.09'
L91	N 89°16'59" W	35.09'
L92	N 89°16'59" W	35.09'
L93	N 89°16'59" W	35.09'
L94	N 89°16'59" W	35.09'
L95	N 89°16'59" W	35.09'
L96	N 89°16'59" W	35.09'
L97	N 89°16'59" W	35.09'
L98	N 89°16'59" W	35.09'
L99	N 89°16'59" W	35.09'
L100	N 89°16'59" W	35.09'
L101	N 89°16'59" W	35.09'
L102	N 89°16'59" W	35.09'
L103	N 89°16'59" W	35.09'
L104	N 89°16'59" W	35.09'
L105	N 89°16'59" W	35.09'
L106	N 89°16'59" W	35.09'
L107	N 89°16'59" W	35.09'
L108	N 89°16'59" W	35.09'
L109	N 89°16'59" W	35.09'
L110	N 89°16'59" W	35.09'
L111	N 89°16'59" W	35.09'
L112	N 89°16'59" W	35.09'
L113	N 89°16'59" W	35.09'
L114	N 89°16'59" W	35.09'
L115	N 89°16'59" W	35.09'
L116	N 89°16'59" W	35.09'
L117	N 89°16'59" W	35.09'
L118	N 89°16'59" W	35.09'
L119	N 89°16'59" W	35.09'
L120	N 89°16'59" W	35.09'
L121	N 89°16'59" W	35.09'
L122	N 89°16'59" W	35.09'
L123	N 89°16'59" W	35.09'
L124	N 89°16'59" W	35.09'
L125	N 89°16'59" W	35.09'
L126	N 89°16'59" W	35.09'
L127	N 89°16'59" W	35.09'
L128	N 89°16'59" W	35.09'
L129	N 89°16'59" W	35.09'
L130	N 89°16'59" W	35.09'
L131	N 89°16'59" W	35.09'
L132	N 89°16'59" W	35.09'
L133	N 89°16'59" W	35.09'
L134	N 89°16'59" W	35.09'
L135	N 89°16'59" W	35.09'
L136	N 89°16'59" W	35.09'
L137	N 89°16'59" W	35.09'
L138	N 89°16'59" W	35.09'
L139	N 89°16'59" W	35.09'
L140	N 89°16'59" W	35.09'
L141	N 89°16'59" W	35.09'
L142	N 89°16'59" W	35.09'
L143	N 89°16'59" W	35.09'
L144	N 89°16'59" W	35.09'
L145	N 89°16'59" W	35.09'
L146	N 89°16'59" W	35.09'
L147	N 89°16'59" W	35.09'
L148	N 89°16'59" W	35.09'
L149	N 89°16'59" W	35.09'
L150	N 89°16'59" W	35.09'
L151	N 89°16'59" W	35.09'
L152	N 89°16'59" W	35.09'
L153	N 89°16'59" W	35.09'
L154	N 89°16'59" W	35.09'
L155	N 89°16'59" W	35.09'
L156	N 89°16'59" W	35.09'
L157	N 89°16'59" W	35.09'
L158	N 89°16'59" W	35.09'
L159	N 89°16'59" W	35.09'
L160	N 89°16'59" W	35.09'
L161	N 89°16'59" W	35.09'
L162	N 89°16'59" W	35.09'
L163	N 89°16'59" W	35.09'
L164	N 89°16'59" W	35.09'
L165	N 89°16'59" W	35.09'
L166	N 89°16'59" W	35.09'
L167	N 89°16'59" W	35.09'
L168	N 89°16'59" W	35.09'
L169	N 89°16'59" W	35.09'
L170	N 89°16'59" W	35.09'
L171	N 89°16'59" W	35.09'
L172	N 89°16'59" W	35.09'
L173	N 89°16'59" W	35.09'
L174	N 89°16'59" W	35.09'
L175	N 89°16'59" W	35.09'
L176	N 89°16'59" W	35.09'
L177	N 89°16'59" W	35.09'
L178	N 89°16'59" W	35.09'
L179	N 89°16'59" W	35.09'
L180	N 89°16'59" W	35.09'
L181	N 89°16'59" W	35.09'
L182	N 89°16'59" W	35.09'
L183	N 89°16'59" W	35.09'
L184	N 89°16'59" W	35.09'
L185	N 89°16'59" W	35.09'
L186	N 89°16'59" W	35.09'
L187	N 89°16'59" W	35.09'
L188	N 89°16'59" W	35.09'
L189	N 89°16'59" W	35.09'
L190	N 89°16'59" W	35.09'
L191	N 89°16'59" W	35.09'
L192	N 89°16'59" W	35.09'
L193	N 89°16'59" W	35.09'
L194	N 89°16'59" W	35.09'
L195	N 89°16'59" W	35.09'
L196	N 89°16'59" W	35.09'
L197	N 89°16'59" W	35.09'
L198	N 89°16'59" W	35.09'
L199	N 89°16'59" W	35.09'
L200	N 89°16'59" W	35.09'



RAYMOND SURVEYING, LLC
W19343 Hwy 10
Strum, WI 54770
www.raymond-surveying.com

Survey performed for: Gary Moe
Data Fieldwork Completed: 8/7/24

Map of Survey

The Southwest Quarter of Section 34, Township 25 North, Range 10 West, Town of Drammen, Eau Claire County, Wisconsin.

LEGAL DESCRIPTIONS:

Parcel "A":

The Northwest Quarter of the Southwest Quarter, the Northeast Quarter of the Southwest Quarter, part of the Southwest Quarter of the Southwest Quarter, and part of the Southwest Quarter of the Southwest Quarter, Section 34, Township 25 North, Range 10 West, Town of Drammen, Eau Claire County, Wisconsin.

Beginning at the West Quarter corner of said section;
 Thence S89°18'59"E, 2814.21 feet;
 Thence S00°06'05"W, 2388.85 feet to the centerline of Moe Road;
 Thence S88°04'07"W, on said line, 140.07 feet;
 Thence S89°01'11"W, on said line and the arc of a curve, concave northerly, having a radius of 1143.16 feet, a chord bearing of S88°34'11"W, and a chord distance of 98.77 feet;
 Thence N88°55'45"W, on said line, 310.93 feet;
 Thence N88°55'45"W, on said line and the arc of a curve, concave southerly, having a radius of 3447.55 feet, a chord bearing of S89°48'48"W, and a chord distance of 151.33 feet;
 Thence S88°33'20"W, on said line, 511.73 feet;
 Thence N70°02'02"E, on said line and the arc of a curve, concave northerly, having a radius of 359.08 feet, a chord bearing of N77°52'48"W, and a chord distance of 168.43 feet;
 Thence N54°18'57"W, on said line, 430.91 feet;
 Thence S39°09'59"E, on said line and the arc of a curve, concave southerly, having a radius of 472.47 feet, a chord bearing of N78°51'54"W, and a chord distance of 237.38 feet;
 Thence S88°35'09"W, on said line, 512.05 feet;
 Thence N71°03'03"E, on said line and the arc of a curve, concave southerly, having a radius of 116.25 feet, a chord bearing of S54°17'25"W, and a chord distance of 156.46 feet;
 Thence S01°50'52"W, on said line, 327.98 feet to the Southwest corner of said section;
 Thence N00°27'35"E, 2843.61 feet to the point of beginning.

Parcel contains 6,082,668 square feet or 139.64 acres of land and is subject to easements of record.

Parcel "B":

Part of the Southwest Quarter of the Southwest Quarter, and part of the Southwest Quarter of the Southwest Quarter, Section 34, Township 25 North, Range 10 West, Town of Drammen, Eau Claire County, Wisconsin.

Beginning at the South Quarter corner of said section;
 Thence N88°37'59"W, 2630.63 feet to the Southwest corner of said section;
 Thence N01°59'42"E, on the centerline of Moe Road, 327.95 feet;
 Thence N71°03'03"E, on said line and the arc of a curve, concave southerly, having a radius of 116.25 feet, a chord bearing of N44°17'25"E, and a chord distance of 156.46 feet;
 Thence N88°35'09"E, on said line, 512.05 feet;
 Thence S39°09'59"E, on said line and the arc of a curve, concave southerly, having a radius of 472.47 feet, a chord bearing of S78°51'54"E, and a chord distance of 237.38 feet;
 Thence S64°18'57"E, on said line, 430.91 feet;
 Thence N70°02'02"E, on said line and the arc of a curve, concave northerly, having a radius of 359.08 feet, a chord bearing of S77°52'48"W, and a chord distance of 168.43 feet;
 Thence N88°33'20"E, on said line, 511.73 feet;
 Thence N151°35'03"E, on said line and the arc of a curve, concave southerly, having a radius of 3447.55 feet, a chord bearing of N89°48'48"W, and a chord distance of 151.33 feet;
 Thence S88°55'45"E, on said line, 310.93 feet;
 Thence S89°01'11"E, on said line and the arc of a curve, concave northerly, having a radius of 1143.16 feet, a chord bearing of N88°34'11"E, and a chord distance of 98.77 feet;
 Thence N88°04'07"E, on said line, 140.07 feet;
 Thence S00°06'05"W, 2388.85 feet to the point of beginning.

Parcel contains 828,929 square feet or 19.03 acres of land and is subject to easements of record.

CURVE	RADIUS	ARC LENGTH	CHORD LENGTH	BEARING	DELTA ANGLE	TANGENT	BEARING	INITIANT	BEARING	BEARING-OUT
C1	116.25	171.63	156.46	N 44°17'25" E	84°35'27"	N 86°35'09" E	N 01°59'42" E			
C2	472.47	239.95	237.38	S 78°51'54" E	29°05'55"	N 86°35'09" E	S 64°18'57" E			
C3	359.08	170.02	168.43	S 77°52'48" E	27°07'43"	S 64°18'57" E	N 88°33'20" E			
C4	3447.55	151.35	151.33	N 89°48'48" E	2°30'55"	N 88°33'20" E	S 88°55'45" E			
C5	1143.16	99.81	99.77	N 88°34'11" E	5°00'08"	S 88°55'45" E	N 86°04'07" E			
CA	83.25	122.91	112.05	N 44°17'25" E	84°35'27"	S 86°35'09" E	S 01°59'42" W			
CB	439.47	223.19	220.80	S 78°51'54" E	29°05'55"	N 86°35'09" E	S 64°18'57" E			
CC	392.08	185.64	183.91	S 77°52'48" E	27°07'43"	S 64°18'57" E	N 88°33'20" E			
CD	3414.55	149.90	149.88	N 89°48'48" E	2°30'55"	N 88°33'20" E	S 88°55'45" E			
CE	1176.16	102.69	102.65	N 88°34'11" E	5°00'08"	S 88°55'45" E	N 86°04'07" E			
CF	1110.16	96.97	96.89	S 88°34'11" W	5°00'08"	S 86°04'07" W	S 88°55'45" W			
CG	3480.55	152.79	152.78	S 89°48'48" W	2°30'55"	N 88°55'45" W	S 86°33'20" W			
CH	326.06	154.39	154.35	N 77°52'48" W	27°07'43"	S 86°33'20" W	N 84°18'57" W			
CI	503.47	238.91	233.96	N 78°51'54" W	29°05'55"	N 84°18'57" W	S 86°35'09" W			
CJ	149.25	138.06	133.19	S 60°05'08" W	53°00'06"	S 86°35'09" W	S 33°35'03" W			

I, Gregory J. Raymond, Professional Land Surveyor #2506, Hereby Certify:
 That the attached survey and plat were prepared by me or under my direct supervision.

That the attached survey and plat meet or exceed the Minimum Standards for Land Surveying in the State of Wisconsin and comply with AE-7 of the Wisconsin Administrative Codes.

That all information contained within the attached survey and plat is correct to the best of my knowledge and belief.

Dated this 7th day of August, 2024



Gregory J. Raymond, Wisconsin Professional Land Surveyor #2506
 Project Number: 24087



RAYMOND SURVEYING, LLC
 W19343 Hwy 10
 Strum, WI 54770
 www.raymond-surveying.com