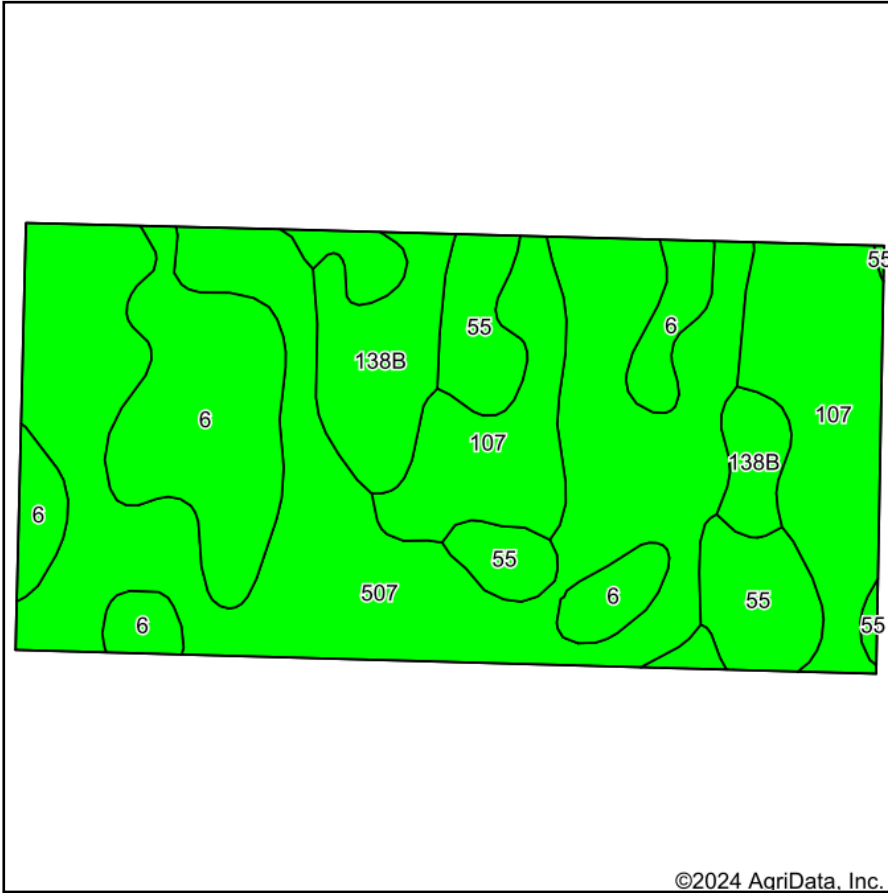
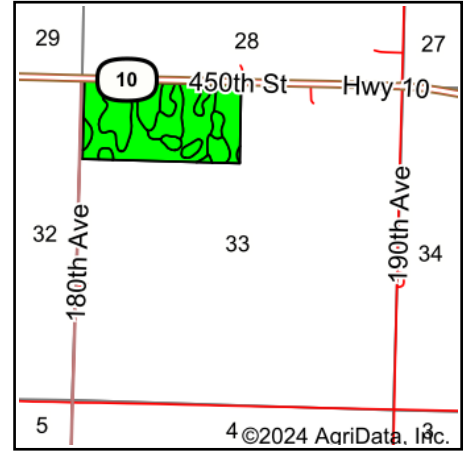


Soils Map



Soils data provided by USDA and NRCS.



State: **Iowa**
 County: **Pocahontas**
 Location: **33-93N-33W**
 Township: **Cummins**
 Acres: **75.34**
 Date: **6/12/2024**



Maps Provided By:



© AgriData, Inc. 2023

www.AgriDataInc.com



Area Symbol: IA151, Soil Area Version: 30

| Code | Soil Description | Acres | Percent of field | CSR2 Legend | Non-Irr Class *c | CSR2** | *n NCCPI Overall | *n NCCPI Corn | *n NCCPI Small Grains | *n NCCPI Soybeans | |
|-------------------------|--|-------|------------------|-------------|------------------|-------------|------------------|----------------|-----------------------|-------------------|----------------|
| 507 | Canisteo clay loam, 0 to 2 percent slopes | 32.44 | 43.0% | | llw | 84 | 81 | 71 | 65 | 81 | |
| 107 | Webster clay loam, 0 to 2 percent slopes | 15.85 | 21.0% | | llw | 86 | 83 | 78 | 70 | 82 | |
| 6 | Okoboji silty clay loam, 0 to 1 percent slopes | 13.38 | 17.8% | | lllw | 59 | 77 | 74 | 74 | 74 | |
| 55 | Nicollet clay loam, 1 to 3 percent slopes | 7.14 | 9.5% | | lw | 89 | 81 | 81 | 74 | 81 | |
| 138B | Clarion loam, 2 to 6 percent slopes | 6.53 | 8.7% | | lle | 89 | 83 | 78 | 72 | 83 | |
| Weighted Average | | | | | | 2.08 | 80.9 | *n 80.9 | *n 74.6 | *n 69.1 | *n 80.1 |

**IA has updated the CSR values for each county to CSR2.

*n: The aggregation method is "Weighted Average using all components"

*c: Using Capabilities Class Dominant Condition Aggregation Method

Soils data provided by USDA and NRCS.