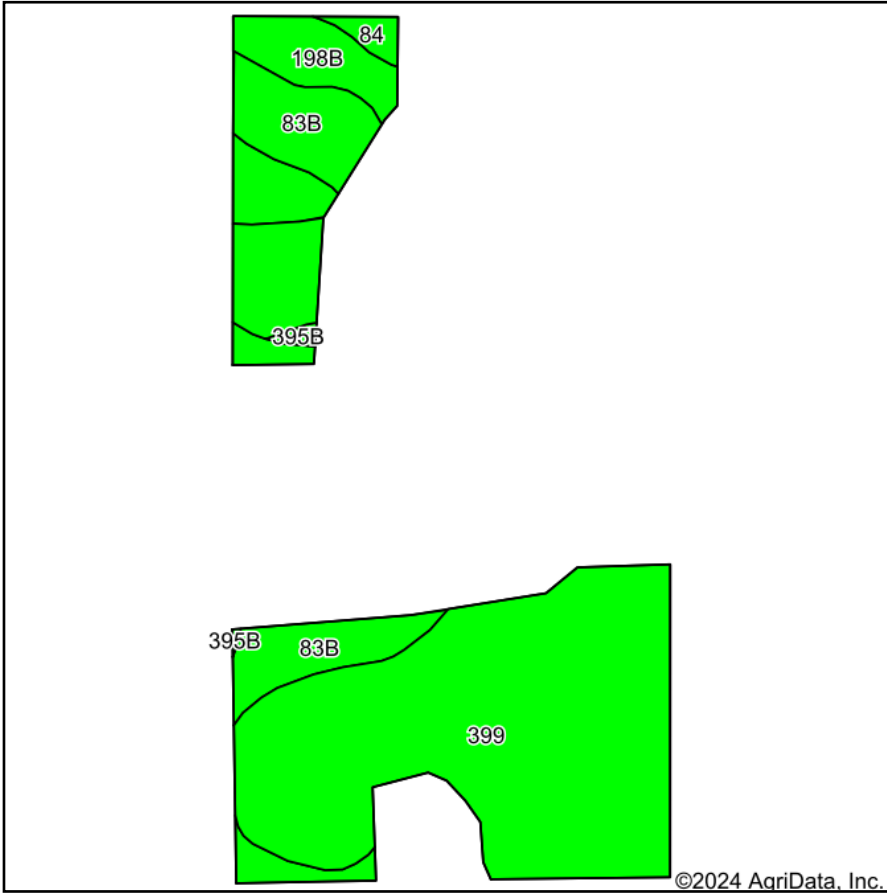
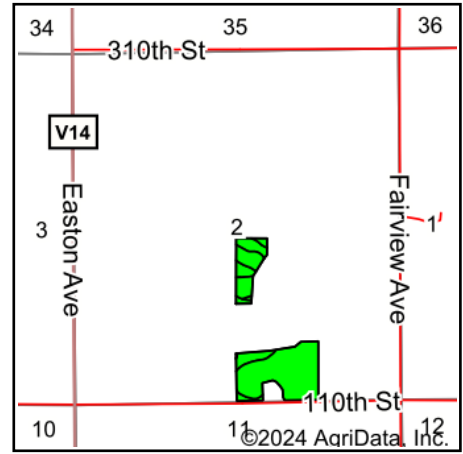


Soils Map



Soils data provided by USDA and NRCS.



State: **Iowa**
 County: **Bremer**
 Location: **2-93N-14W**
 Township: **Polk**
 Acres: **32.6**
 Date: **6/27/2024**



Maps Provided By:



Area Symbol: IA017, Soil Area Version: 28

Code	Soil Description	Acres	Percent of field	CSR2 Legend	Non-Irr Class *c	CSR2**	*n NCCPI Overall	*n NCCPI Corn	*n NCCPI Small Grains	*n NCCPI Soybeans	
399	Readlyn silt loam, 1 to 3 percent slopes	20.81	63.8%		lw	91	80	80	65	68	
83B	Kenyon loam, 2 to 5 percent slopes	7.43	22.8%		lle	90	89	89	71	77	
198B	Floyd loam, 1 to 4 percent slopes	3.29	10.1%		llw	89	88	83	66	88	
391B	Clyde-Floyd complex, 1 to 4 percent slopes	0.45	1.4%		llw	87	89	87	72	86	
84	Clyde silty clay loam, 0 to 3 percent slopes	0.44	1.3%		llw	88	90	90	76	85	
395B	Marquis loam, 2 to 5 percent slopes	0.18	0.6%		lle	91	90	90	74	80	
Weighted Average						1.36	90.5	*n 83.2	*n 82.6	*n 66.8	*n 72.6

**IA has updated the CSR values for each county to CSR2.

*n: The aggregation method is "Weighted Average using all components"

*c: Using Capabilities Class Dominant Condition Aggregation Method