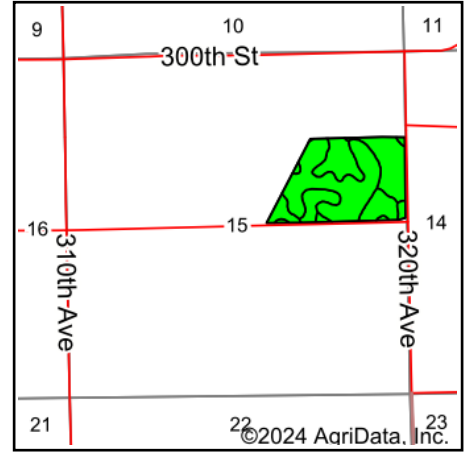
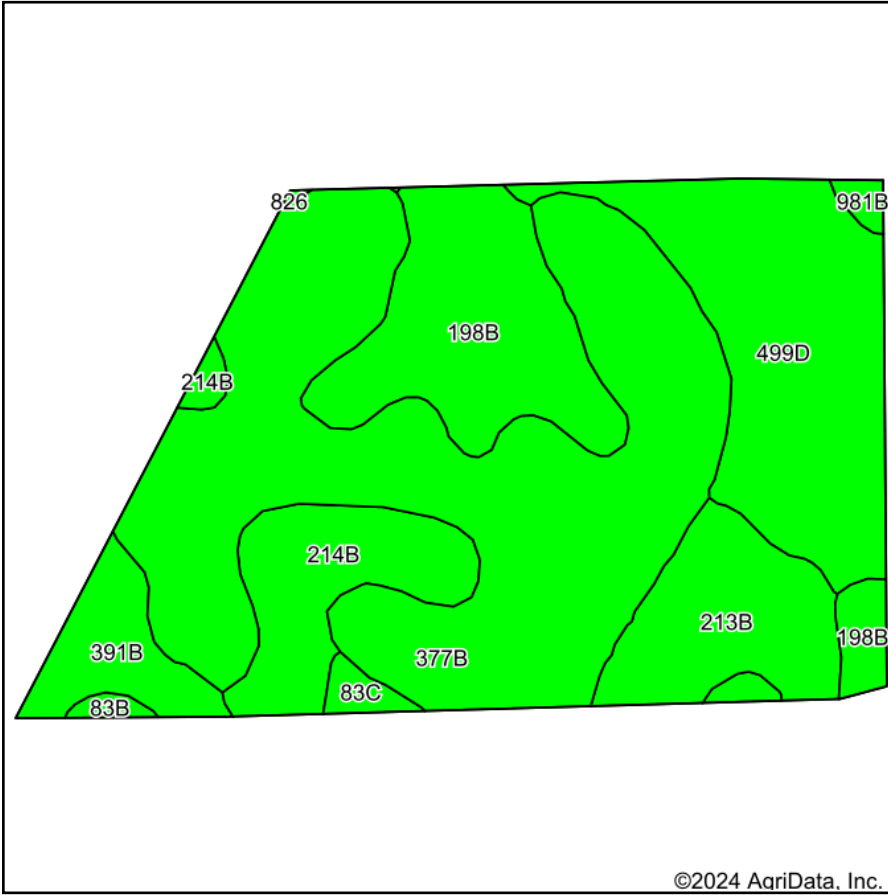


# Soils Map



State: **Iowa**  
 County: **Delaware**  
 Location: **15-87N-3W**  
 Township: **South Fork**  
 Acres: **53.65**  
 Date: **6/24/2024**



Maps Provided By:



Soils data provided by USDA and NRCS.

Area Symbol: IA055, Soil Area Version: 30											
Code	Soil Description	Acres	Percent of field	CSR2 Legend	Non-Irr Class *c	CSR2**	*n NCCPI Overall	*n NCCPI Corn	*n NCCPI Small Grains	*n NCCPI Soybeans	
377B	Dinsdale silt loam, 2 to 5 percent slopes	23.79	44.4%		Ile	95	88	88	70	76	
499D	Nordness silt loam, 5 to 14 percent slopes	9.78	18.2%		Vls	5	50	50	44	34	
198B	Floyd loam, 1 to 4 percent slopes	7.56	14.1%		Ilw	89	88	83	66	88	
213B	Rockton loam, 30 to 40 inches to limestone, 2 to 5 percent	4.54	8.5%		Ile	53	71	71	70	60	
214B	Rockton loam, 20 to 30 inches to limestone, 2 to 5 percent	4.41	8.2%		Ile	49	66	63	66	50	
391B	Clyde-Floyd complex, 1 to 4 percent slopes	2.40	4.5%		Ilw	87	89	87	72	86	
83B	Kenyon loam, 2 to 5 percent slopes	0.45	0.8%		Ile	90	89	89	71	77	
83C	Kenyon loam, 5 to 9 percent slopes	0.45	0.8%		Ille	85	88	88	70	75	
981B	Worthen silt loam, 2 to 5 percent slopes	0.27	0.5%		Ile	94	94	94	80	86	
<b>Weighted Average</b>						<b>2.74</b>	<b>69.9</b>	<b>*n 77.9</b>	<b>*n 76.9</b>	<b>*n 64.5</b>	<b>*n 67</b>

\*\*IA has updated the CSR values for each county to CSR2.

\*n: The aggregation method is "Weighted Average using all components"

\*c: Using Capabilities Class Dominant Condition Aggregation Method

Soils data provided by USDA and NRCS.