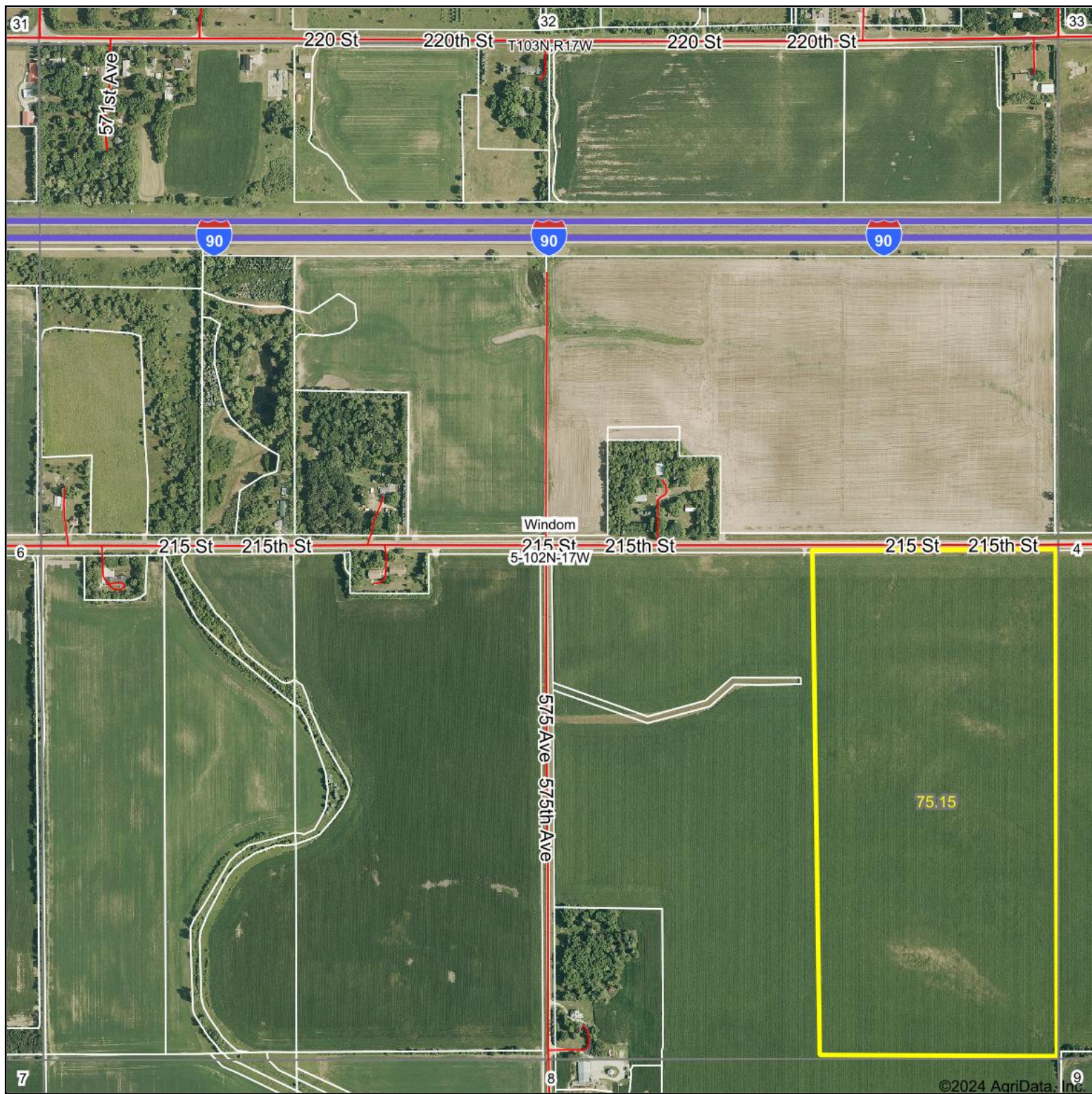


Aerial Map



©2024 AgriData, Inc.

Boundary Center: 43° 39' 47.87, -92° 53' 29.4



Maps Provided By:



© AgriData, Inc. 2023 www.AgriDataInc.com

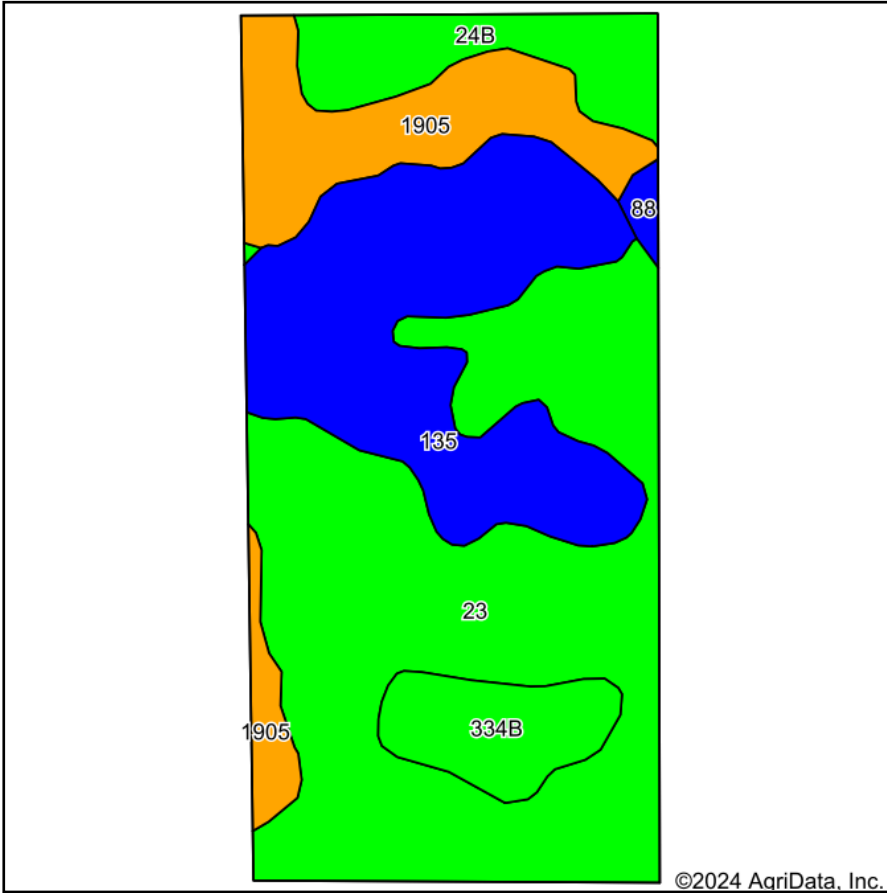
5-102N-17W
Mower County
Minnesota



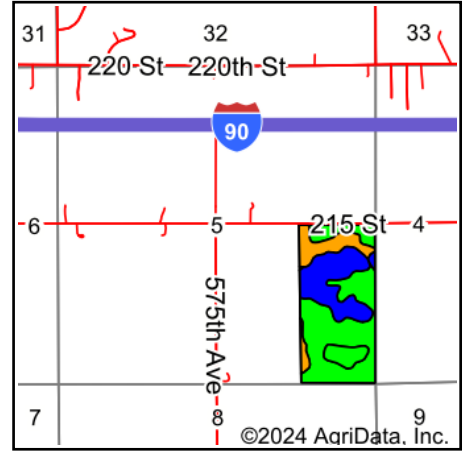
6/17/2024

Field borders provided by Farm Service Agency as of 5/21/2008.

Soils Map



Soils data provided by USDA and NRCS.



State: **Minnesota**
 County: **Mower**
 Location: **5-102N-17W**
 Township: **Windom**
 Acres: **75.15**
 Date: **6/17/2024**



Maps Provided By:



© AgriData, Inc. 2023

www.AgriDataInc.com



Area Symbol: MN099, Soil Area Version: 19

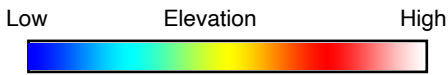
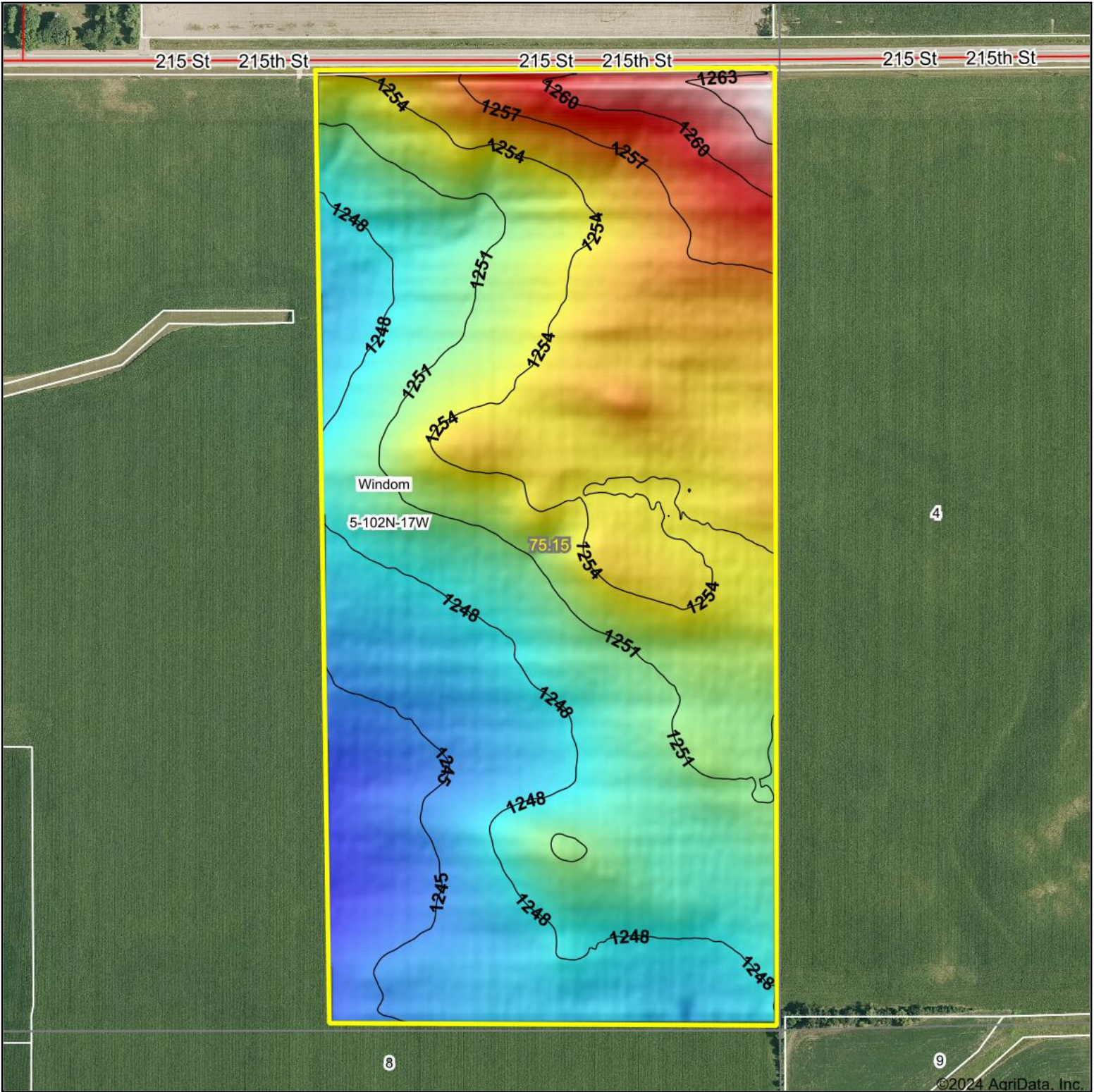
Code	Soil Description	Acres	Percent of field	PI Legend	Non-Irr Class *c	Productivity Index	*n NCCPI Overall	*n NCCPI Corn	*n NCCPI Small Grains	*n NCCPI Soybeans
23	Skyberg silt loam, 0 to 3 percent slopes	34.53	46.0%		lw	95	82	82	64	65
135	Donnan silt loam	19.57	26.0%		llw	84	72	71	68	60
1905	Brownsdale silt loam	10.13	13.5%		lllw	77	88	87	74	80
24B	Kasson silt loam, 1 to 4 percent slopes	5.79	7.7%		lle	95	79	79	62	63
334B	Vlasaty silt loam, 1 to 4 percent slopes	4.60	6.1%		lle	95	85	85	72	74
88	Clyde silty clay loam, 0 to 3 percent slopes	0.53	0.7%		llw	86	90	90	76	85
Weighted Average					1.68	89.6	*n 80.2	*n 79.8	*n 66.8	*n 66.3

*n: The aggregation method is "Weighted Average using all components"

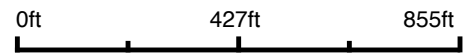
*c: Using Capabilities Class Dominant Condition Aggregation Method

Soils data provided by USDA and NRCS.

Topography Hillshade



Source: USGS 3 meter dem
 Interval(ft): 3
 Min: 1,242.4
 Max: 1,265.2
 Range: 22.8
 Average: 1,251.1
 Standard Deviation: 4.33 ft



5-102N-17W
Mower County
Minnesota

Boundary Center: 43° 39' 47.87, -92° 53' 29.4



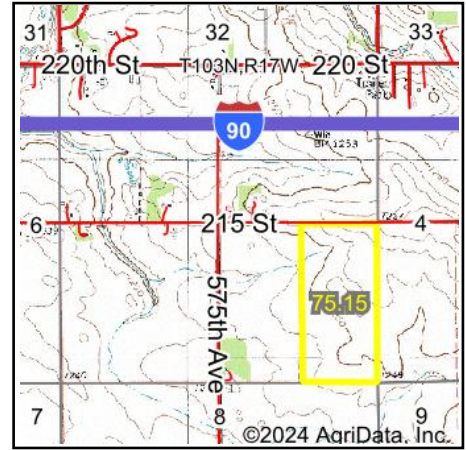
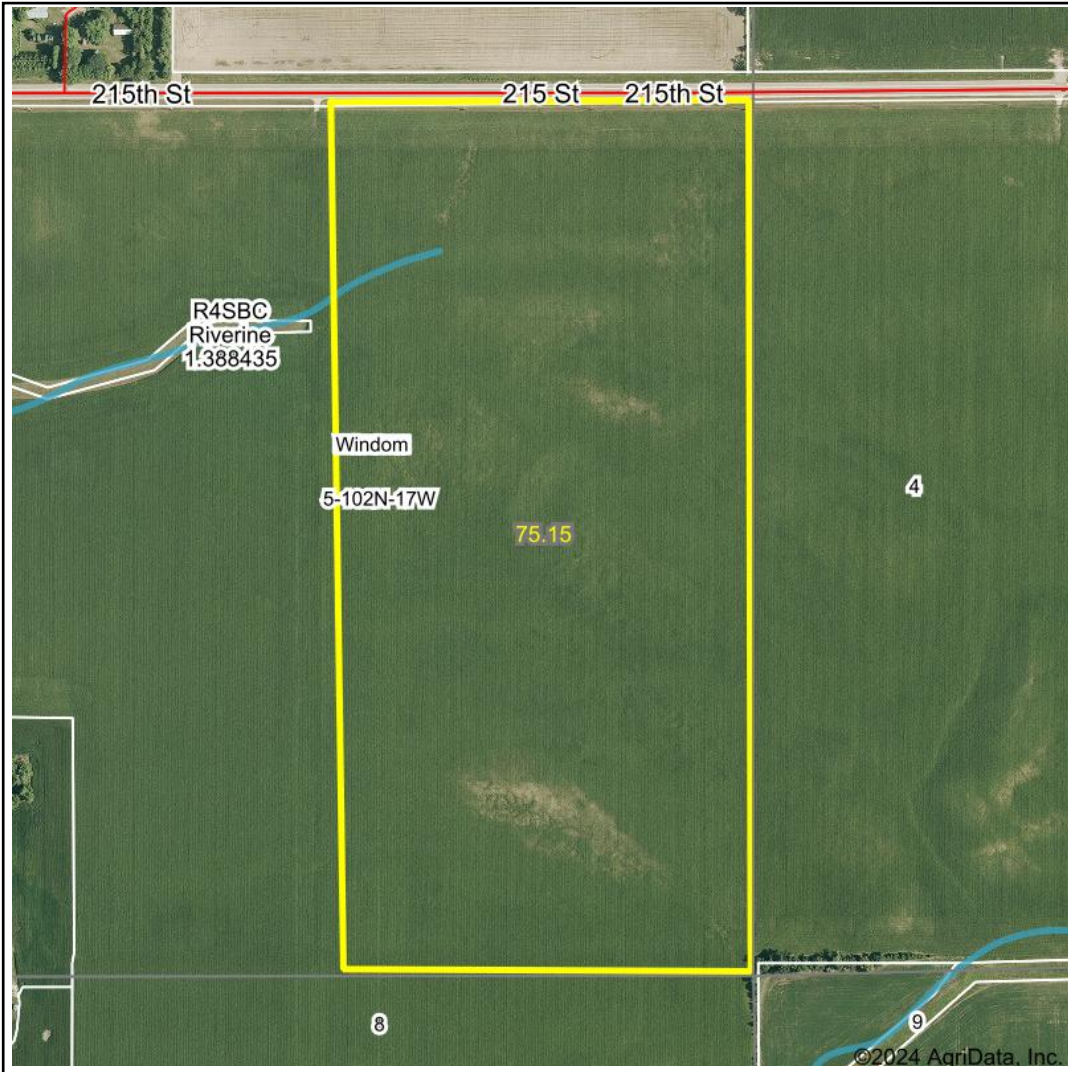
Maps Provided By:



© AgriData, Inc. 2023 www.AgriDataInc.com

Field borders provided by Farm Service Agency as of 5/21/2008.

Wetlands Map



State: Minnesota
Location: 5-102N-17W
County: Mower
Township: Windom
Date: 6/17/2024



Maps Provided By:



© AgriData, Inc. 2023 www.AgriDataInc.com



Classification Code	Type	Acres
R4SBC	Riverine	0.16
	Total Acres	0.16

Data Source: National Wetlands Inventory website. U.S. DoI, Fish and Wildlife Service, Washington, D.C. <http://www.fws.gov/wetlands/>