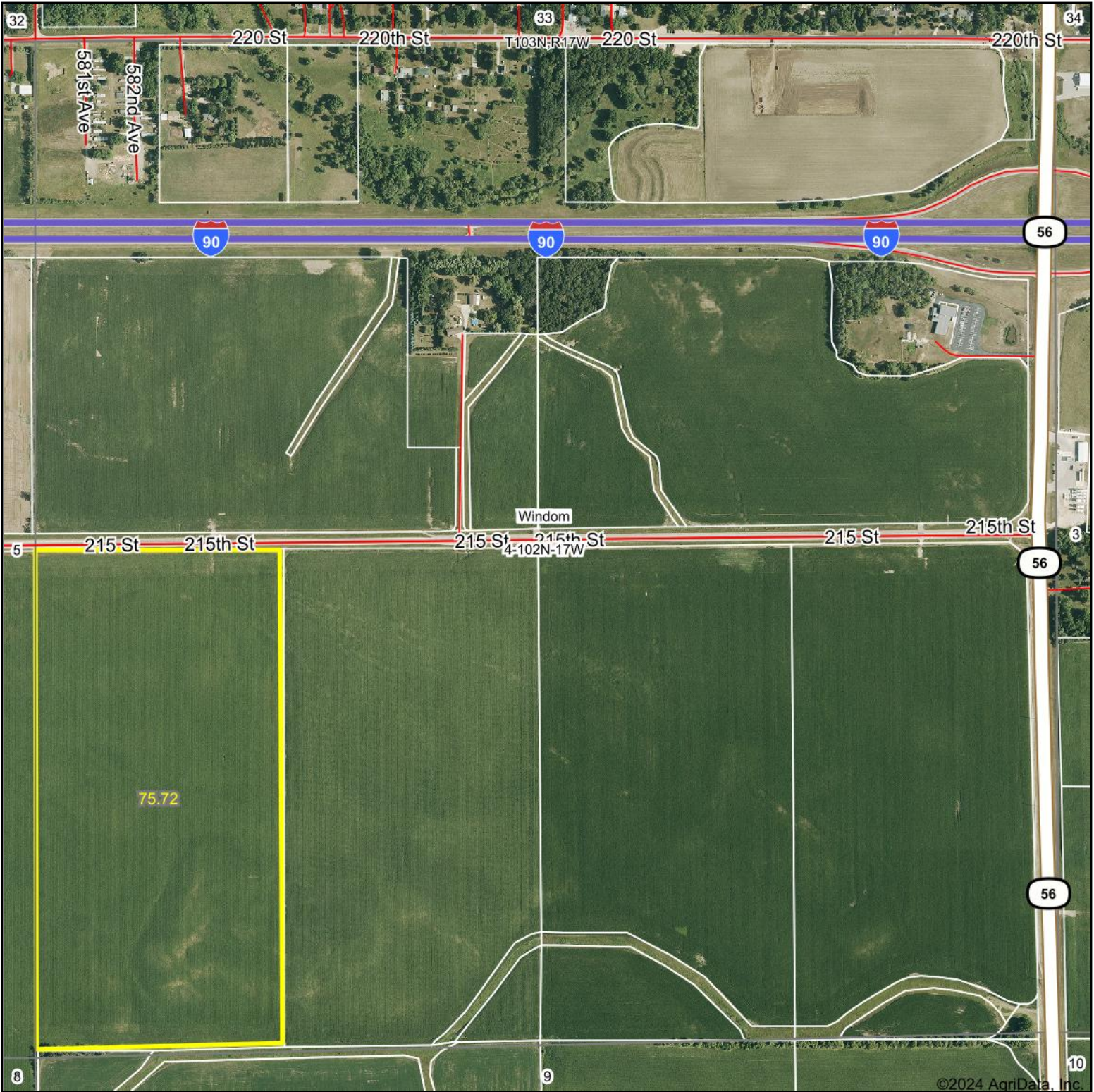
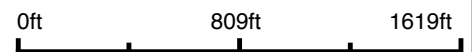


Aerial Map



Boundary Center: 43° 39' 48.02, -92° 53' 11.91



Maps Provided By:



© AgriData, Inc. 2023 www.AgriDataInc.com

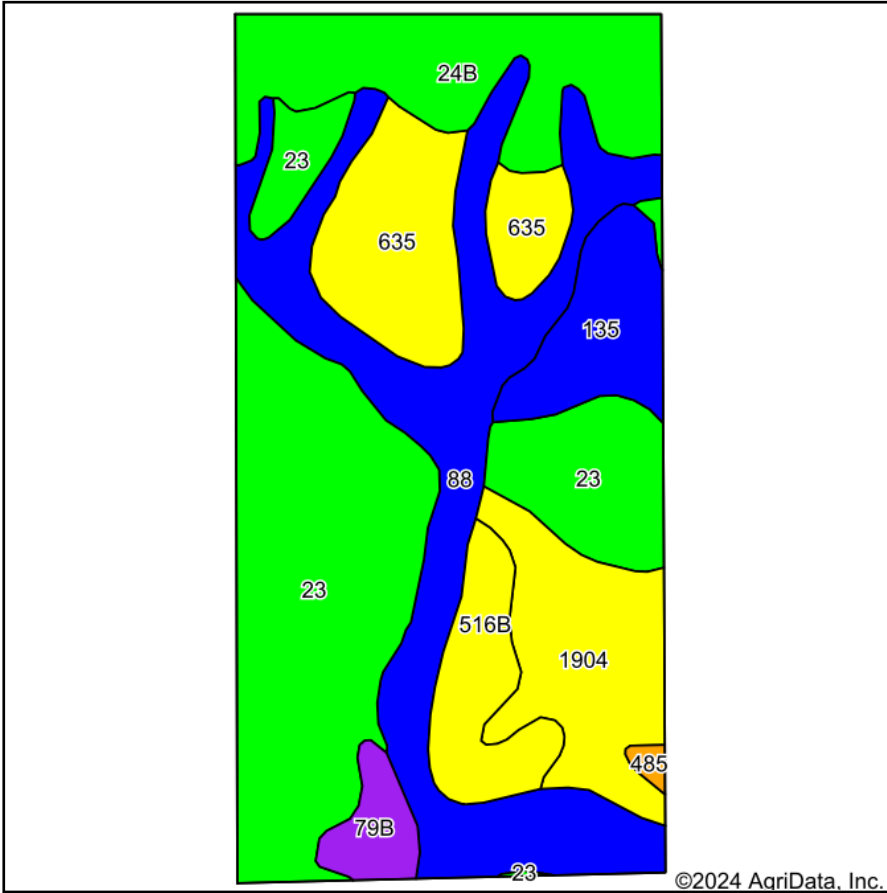
4-102N-17W
Mower County
Minnesota



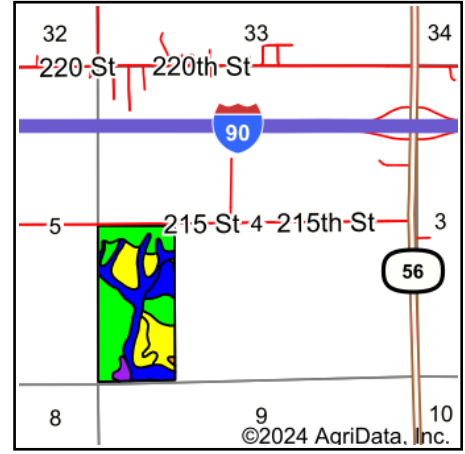
6/17/2024

Field borders provided by Farm Service Agency as of 5/21/2008.

Soils Map



Soils data provided by USDA and NRCS.



State: **Minnesota**
 County: **Mower**
 Location: **4-102N-17W**
 Township: **Windom**
 Acres: **75.72**
 Date: **6/17/2024**



Maps Provided By:



Area Symbol: MN099, Soil Area Version: 19

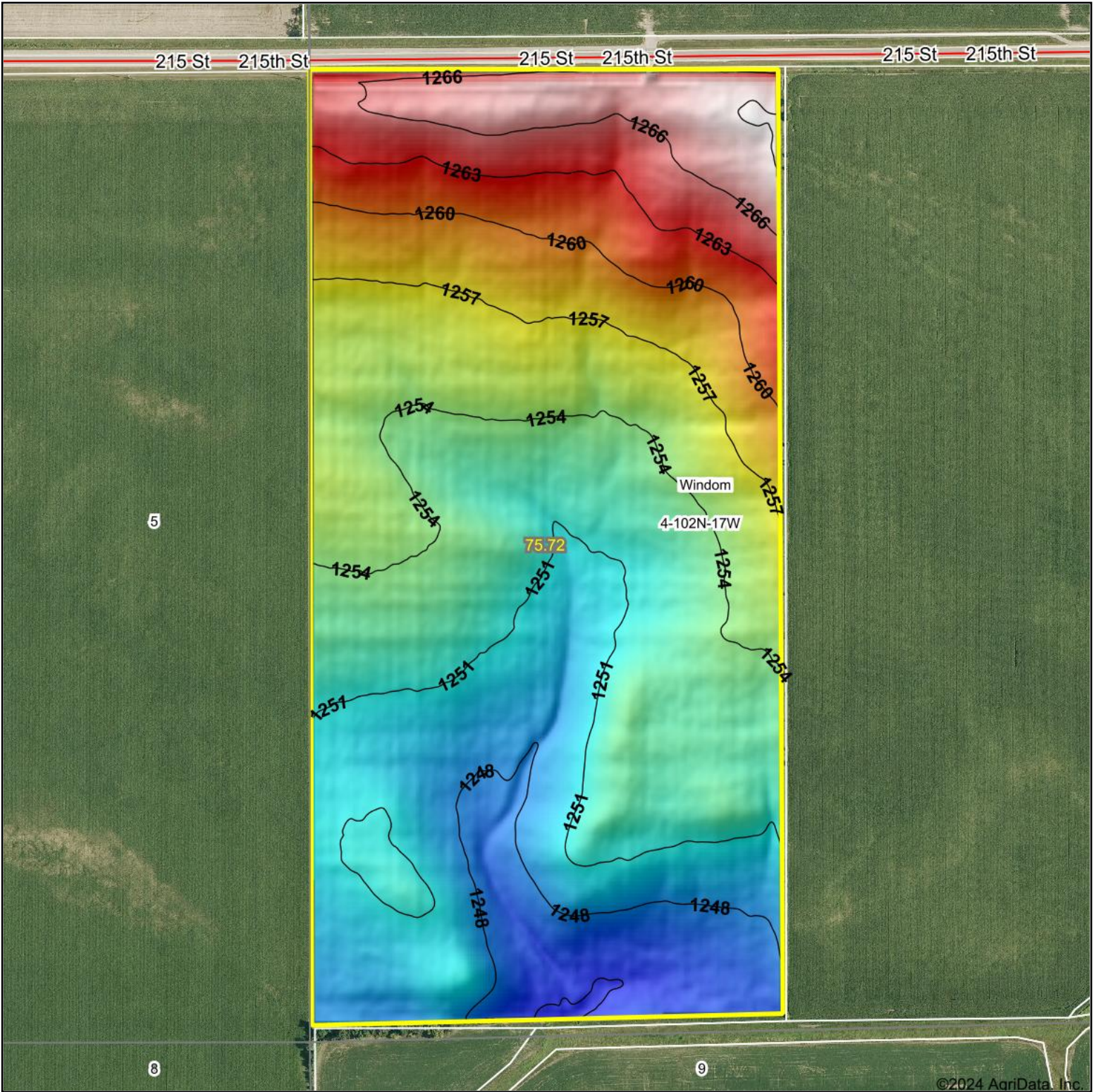
Code	Soil Description	Acres	Percent of field	PI Legend	Non-Irr Class *c	Productivity Index	*n NCCPI Overall	*n NCCPI Corn	*n NCCPI Small Grains	*n NCCPI Soybeans
23	Skyberg silt loam, 0 to 3 percent slopes	23.11	30.5%		lw	95	82	82	64	65
88	Clyde silty clay loam, 0 to 3 percent slopes	17.31	22.9%		llw	86	90	90	76	85
24B	Kasson silt loam, 1 to 4 percent slopes	9.63	12.7%		lle	95	79	79	62	63
635	Riceville silt loam	7.79	10.3%		llw	66	79	79	60	58
1904	Udolpho silt loam, loamy substratum	7.41	9.8%		llw	70	79	79	63	54
135	Donnan silt loam	4.31	5.7%		llw	84	72	71	68	60
516B	Dowagiac loam, 2 to 6 percent slopes	4.15	5.5%		lle	64	68	68	50	45
79B	Billet fine sandy loam, 2 to 6 percent slopes	1.75	2.3%		lls	60	71	71	52	44
485	Lawler silt loam	0.26	0.3%		lls	77	81	81	63	53
Weighted Average					1.72	84.3	*n 81.3	*n 81.2	*n 65.2	*n 65.6

*n: The aggregation method is "Weighted Average using all components"

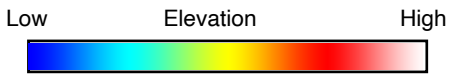
*c: Using Capabilities Class Dominant Condition Aggregation Method

Soils data provided by USDA and NRCS.

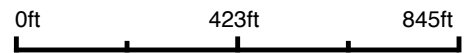
Topography Hillshade



©2024 AgriData, Inc.



Source: USGS 3 meter dem



Interval(ft): 3

Min: 1,244.7

Max: 1,269.2

Range: 24.5

Average: 1,254.7

Standard Deviation: 5.84 ft



4-102N-17W
Mower County
Minnesota

Boundary Center: 43° 39' 48.02, -92° 53' 11.91



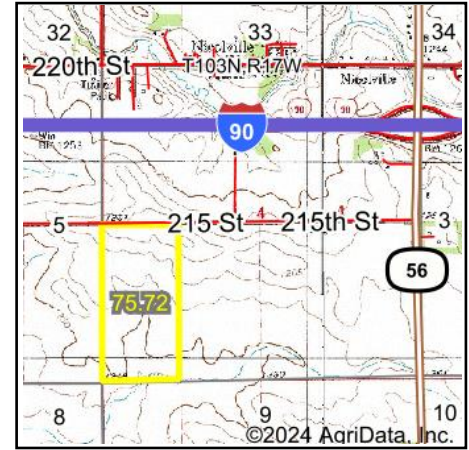
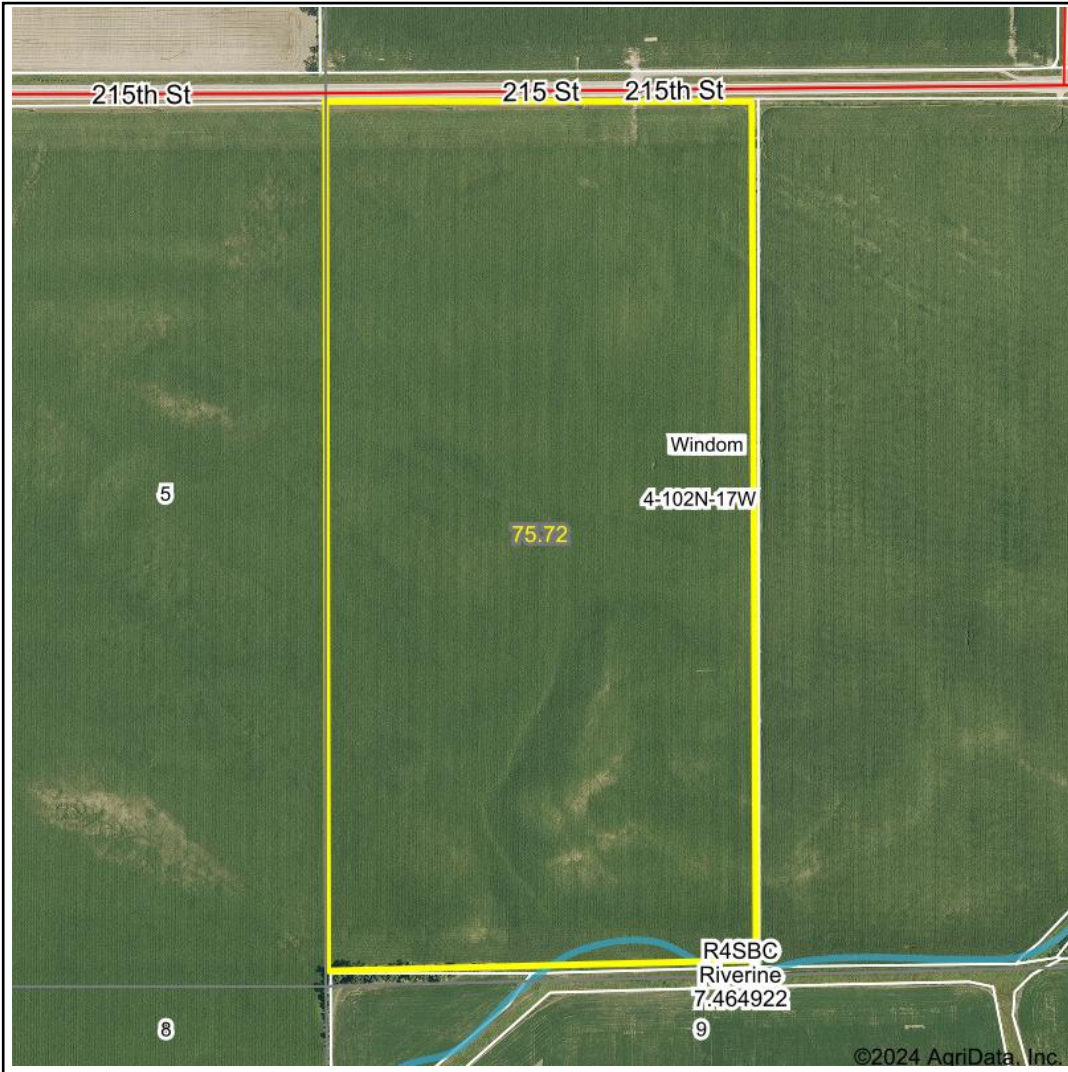
Maps Provided By:



© AgriData, Inc. 2023 www.AgriDataInc.com

Field borders provided by Farm Service Agency as of 5/21/2008.

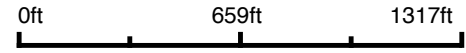
Wetlands Map



State: Minnesota
Location: 4-102N-17W
County: Mower
Township: Windom
Date: 6/17/2024



© AgriData, Inc. 2023 www.AgriDataInc.com



Classification Code	Type	Acres
R4SBC	Riverine	0.21
	Total Acres	0.21

Data Source: National Wetlands Inventory website. U.S. DoI, Fish and Wildlife Service, Washington, D.C. <http://www.fws.gov/wetlands/>