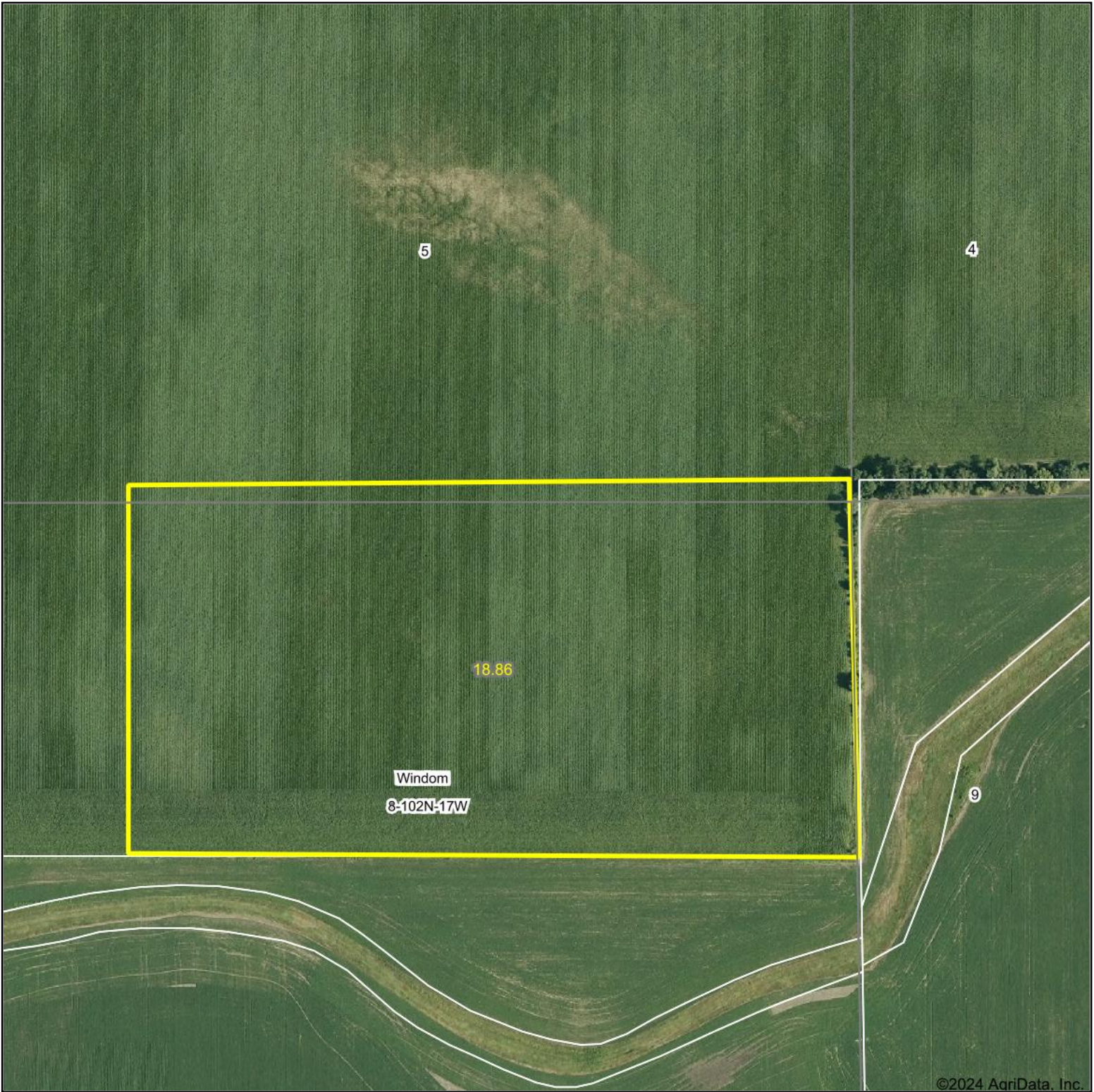
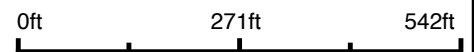


# Aerial Map



©2024 AgriData, Inc.

Boundary Center: 43° 39' 31.87, -92° 53' 29.17



**8-102N-17W**  
**Mower County**  
**Minnesota**

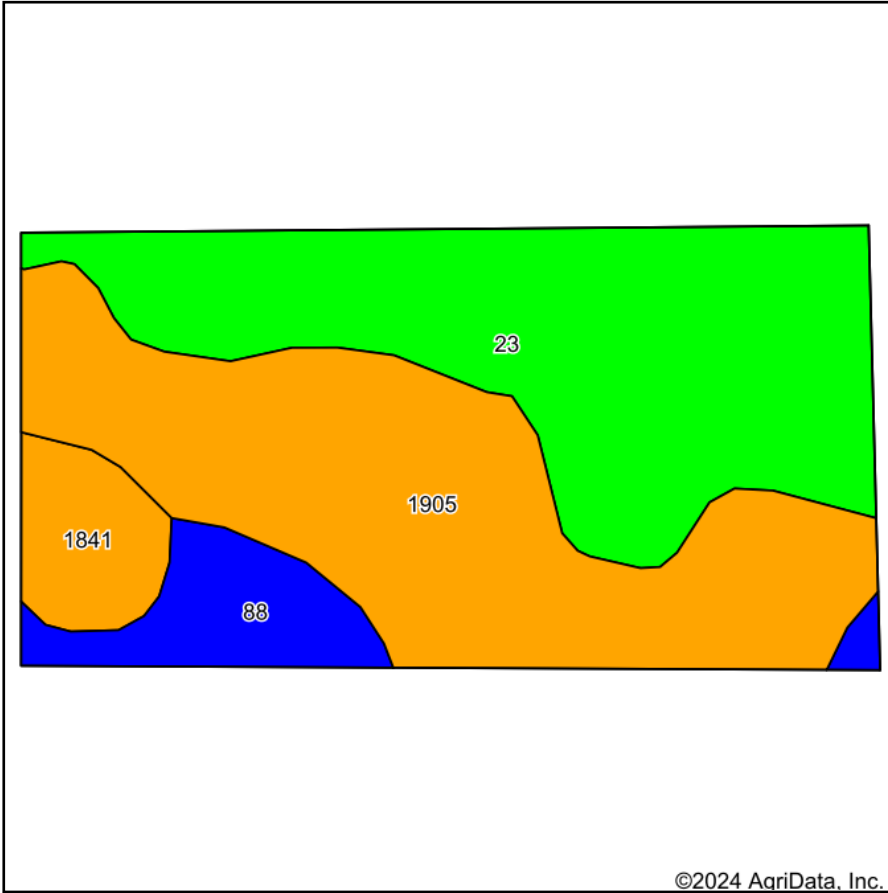


Maps Provided By:  
**surety**  
CUSTOMIZED ONLINE MAPPING  
© AgriData, Inc. 2023 www.AgriDataInc.com

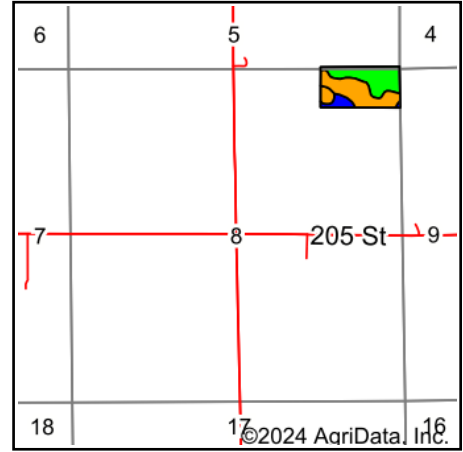
6/17/2024

Field borders provided by Farm Service Agency as of 5/21/2008.

# Soils Map



Soils data provided by USDA and NRCS.



State: **Minnesota**  
 County: **Mower**  
 Location: **8-102N-17W**  
 Township: **Windom**  
 Acres: **18.86**  
 Date: **6/17/2024**



Maps Provided By:



© AgriData, Inc. 2023

www.AgriDataInc.com



Area Symbol: MN099, Soil Area Version: 19

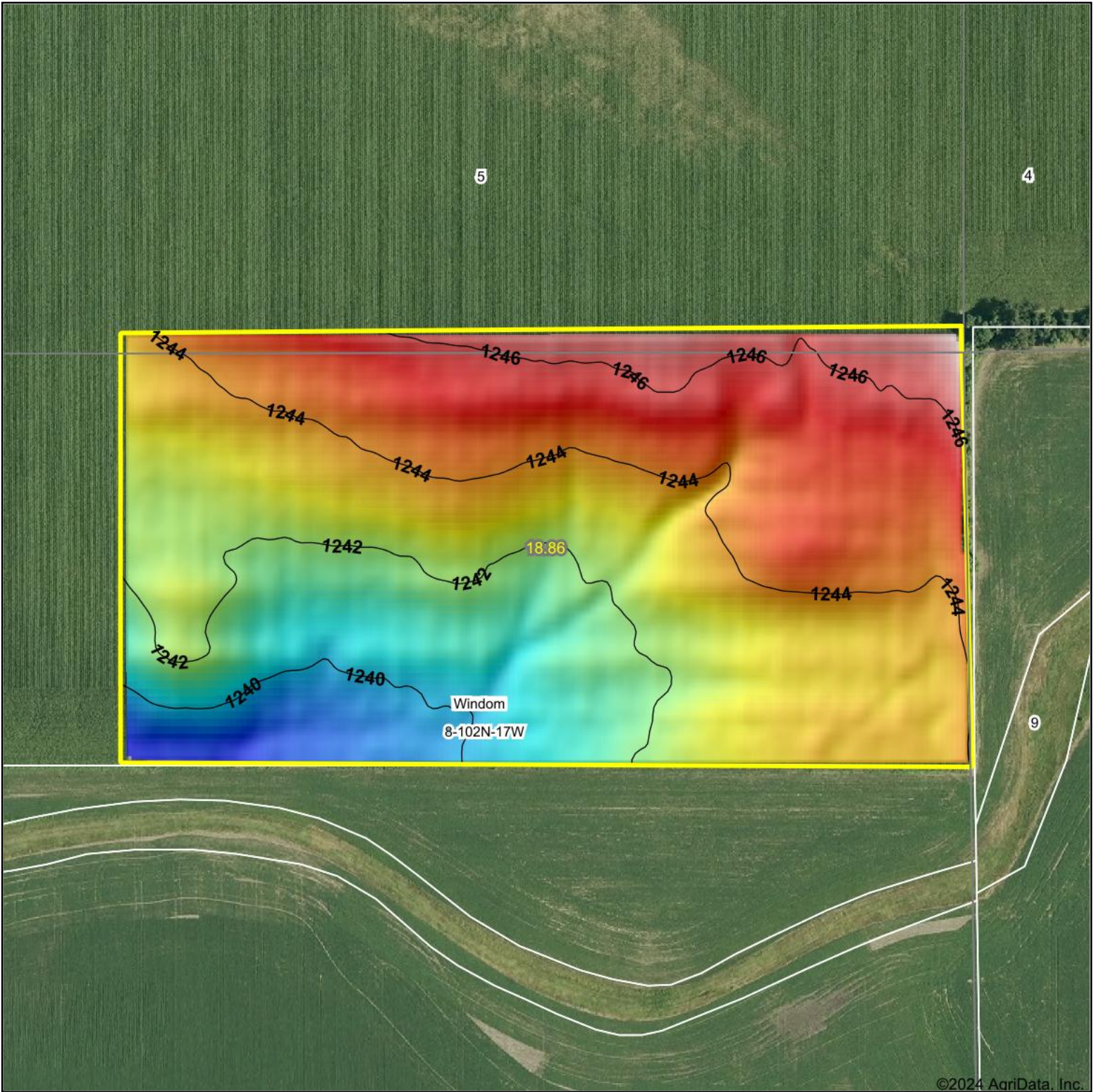
Code	Soil Description	Acres	Percent of field	PI Legend	Non-Irr Class *c	Productivity Index	*n NCCPI Overall	*n NCCPI Corn	*n NCCPI Small Grains	*n NCCPI Soybeans
1905	Brownsdale silt loam	8.05	42.7%		Illw	77	88	87	74	80
23	Skyberg silt loam, 0 to 3 percent slopes	7.98	42.3%		Iw	95	82	82	64	65
88	Clyde silty clay loam, 0 to 3 percent slopes	1.64	8.7%		Ilw	86	90	90	76	85
1841	Hayfield loam, loamy substratum	1.19	6.3%		Ils	79	75	75	62	51
<b>Weighted Average</b>					<b>2.00</b>	<b>85.5</b>	<b>*n 84.8</b>	<b>*n 84.4</b>	<b>*n 69.2</b>	<b>*n 72.3</b>

\*n: The aggregation method is "Weighted Average using all components"

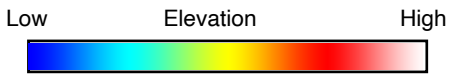
\*c: Using Capabilities Class Dominant Condition Aggregation Method

Soils data provided by USDA and NRCS.

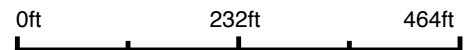
# Topography Hillshade



©2024 AgriData, Inc.



Source: USGS 3 meter dem



Interval(ft): 2

Min: 1,238.2

Max: 1,247.8

Range: 9.6

Average: 1,243.2

Standard Deviation: 1.9 ft



**8-102N-17W**  
**Mower County**  
**Minnesota**

Boundary Center: 43° 39' 31.87, -92° 53' 29.17



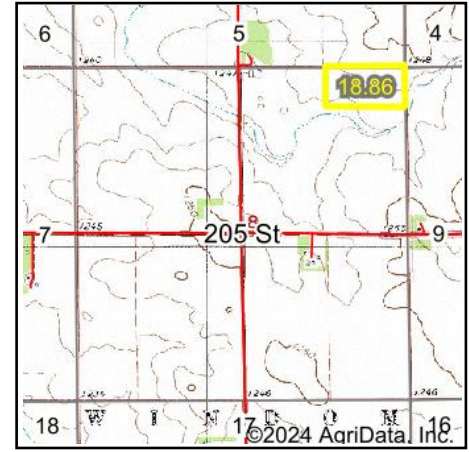
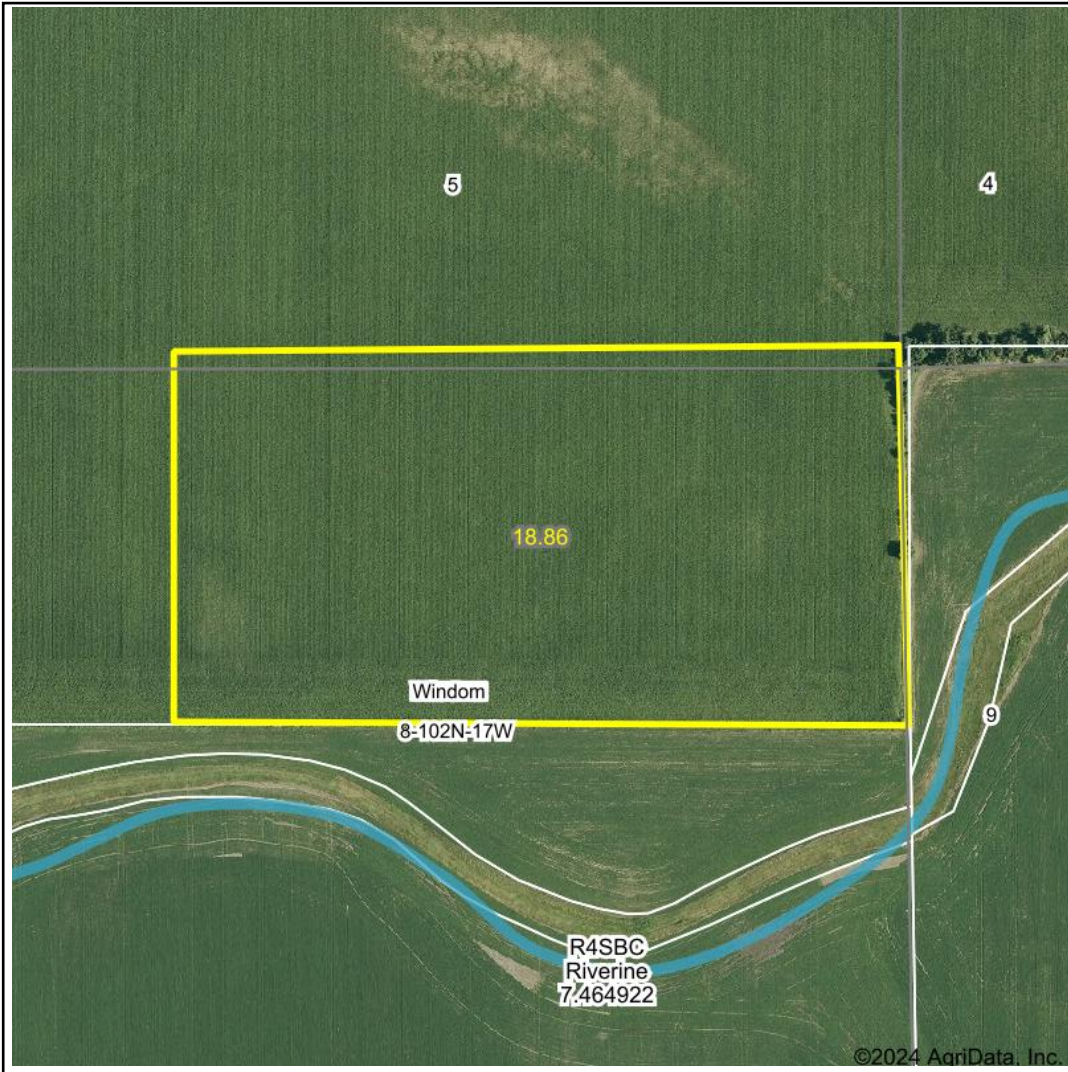
Maps Provided By:



© AgriData, Inc. 2023 www.AgriDataInc.com

Field borders provided by Farm Service Agency as of 5/21/2008.

# Wetlands Map



State: **Minnesota**  
 Location: **8-102N-17W**  
 County: **Mower**  
 Township: **Windom**  
 Date: **6/17/2024**



Maps Provided By:



© AgriData, Inc. 2023 [www.AgriDataInc.com](http://www.AgriDataInc.com)



0ft 382ft 763ft

Classification Code	Type	Acres
	Total Acres	0.00

Data Source: National Wetlands Inventory website. U.S. DoI, Fish and Wildlife Service, Washington, D.C. <http://www.fws.gov/wetlands/>