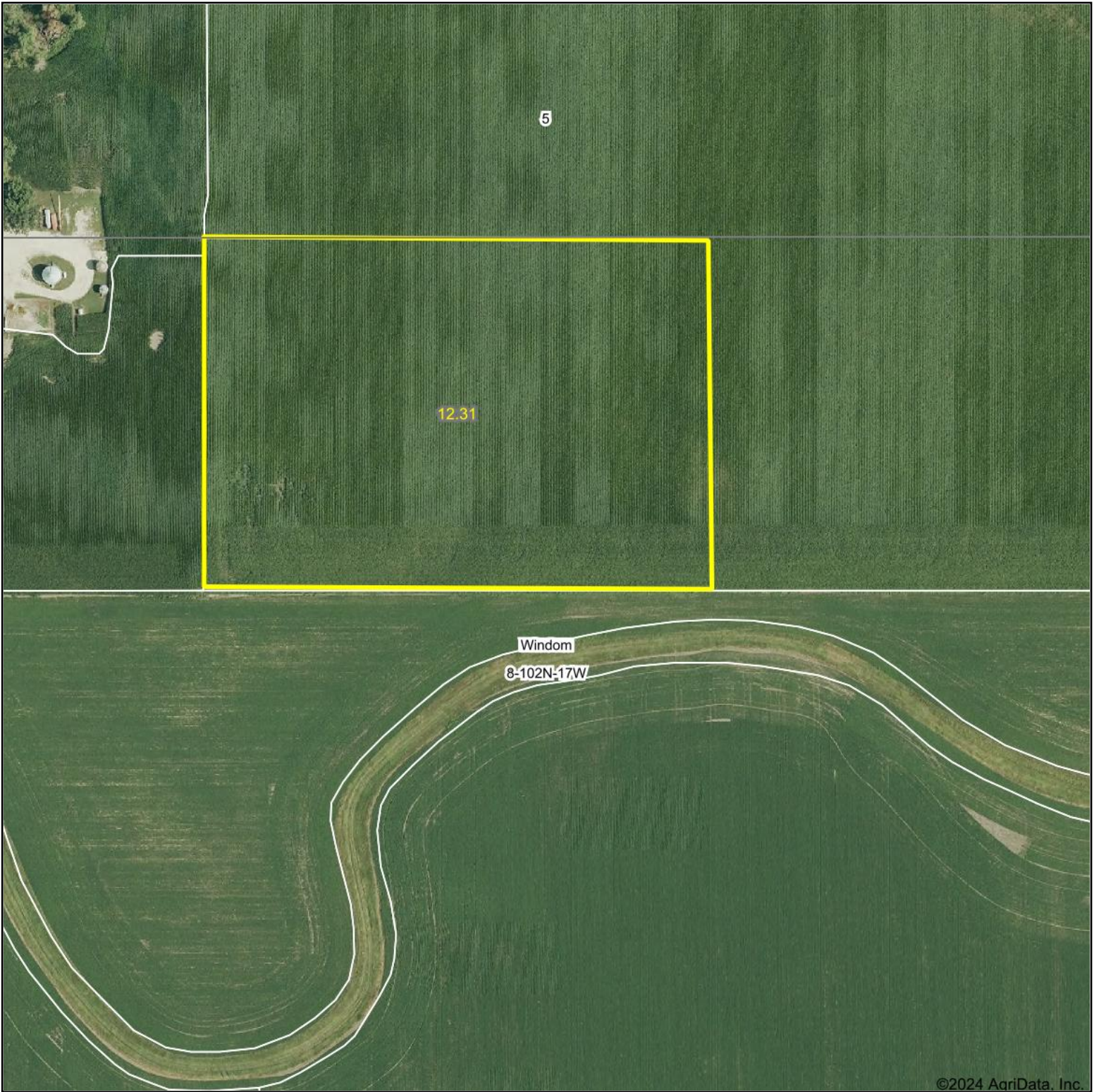
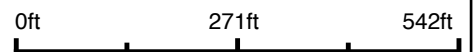


Aerial Map



©2024 AgriData, Inc.

Boundary Center: 43° 39' 31.71, -92° 53' 42.68



Maps Provided By:



© AgriData, Inc. 2023 www.AgriDataInc.com

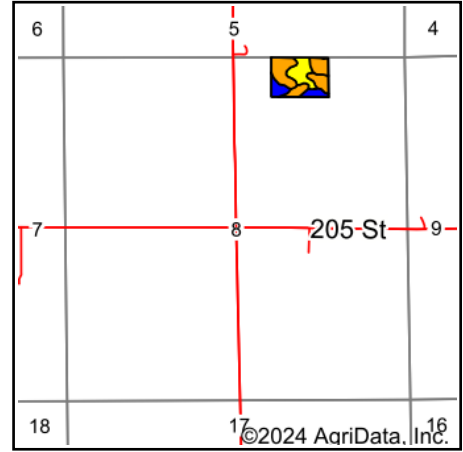
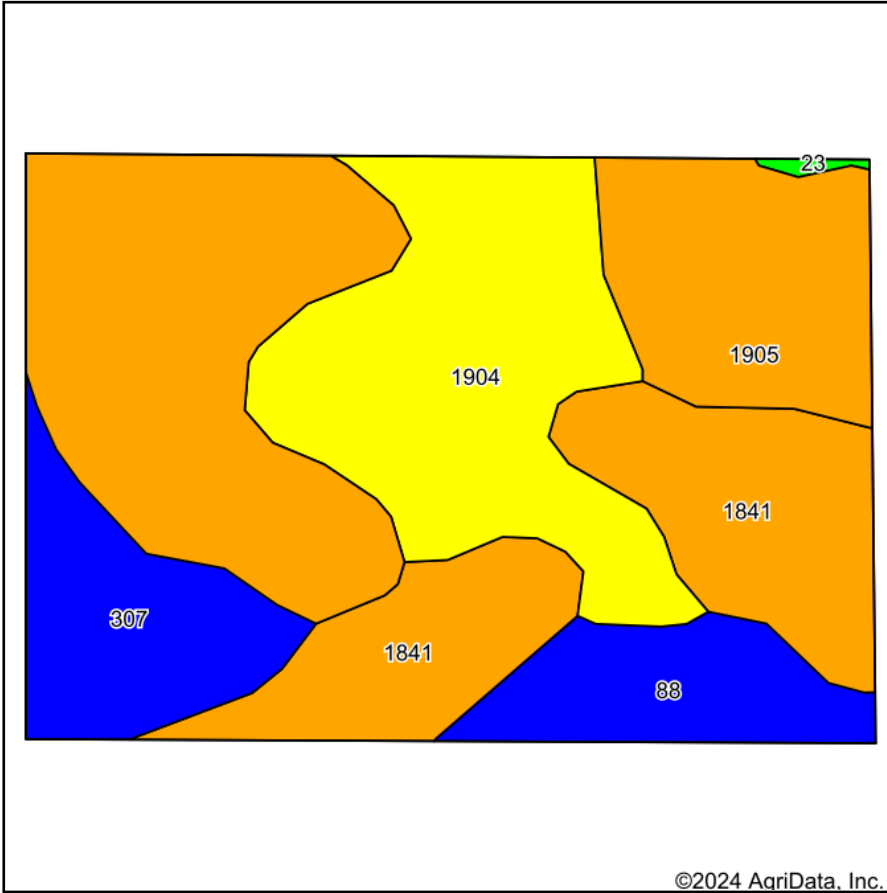
8-102N-17W
Mower County
Minnesota



6/17/2024

Field borders provided by Farm Service Agency as of 5/21/2008.

Soils Map



State: **Minnesota**
 County: **Mower**
 Location: **8-102N-17W**
 Township: **Windom**
 Acres: **12.31**
 Date: **6/17/2024**



Maps Provided By:



Soils data provided by USDA and NRCS.

©2024 AgriData, Inc.

© AgriData, Inc. 2023

www.AgriDataInc.com

Area Symbol: MN099, Soil Area Version: 19

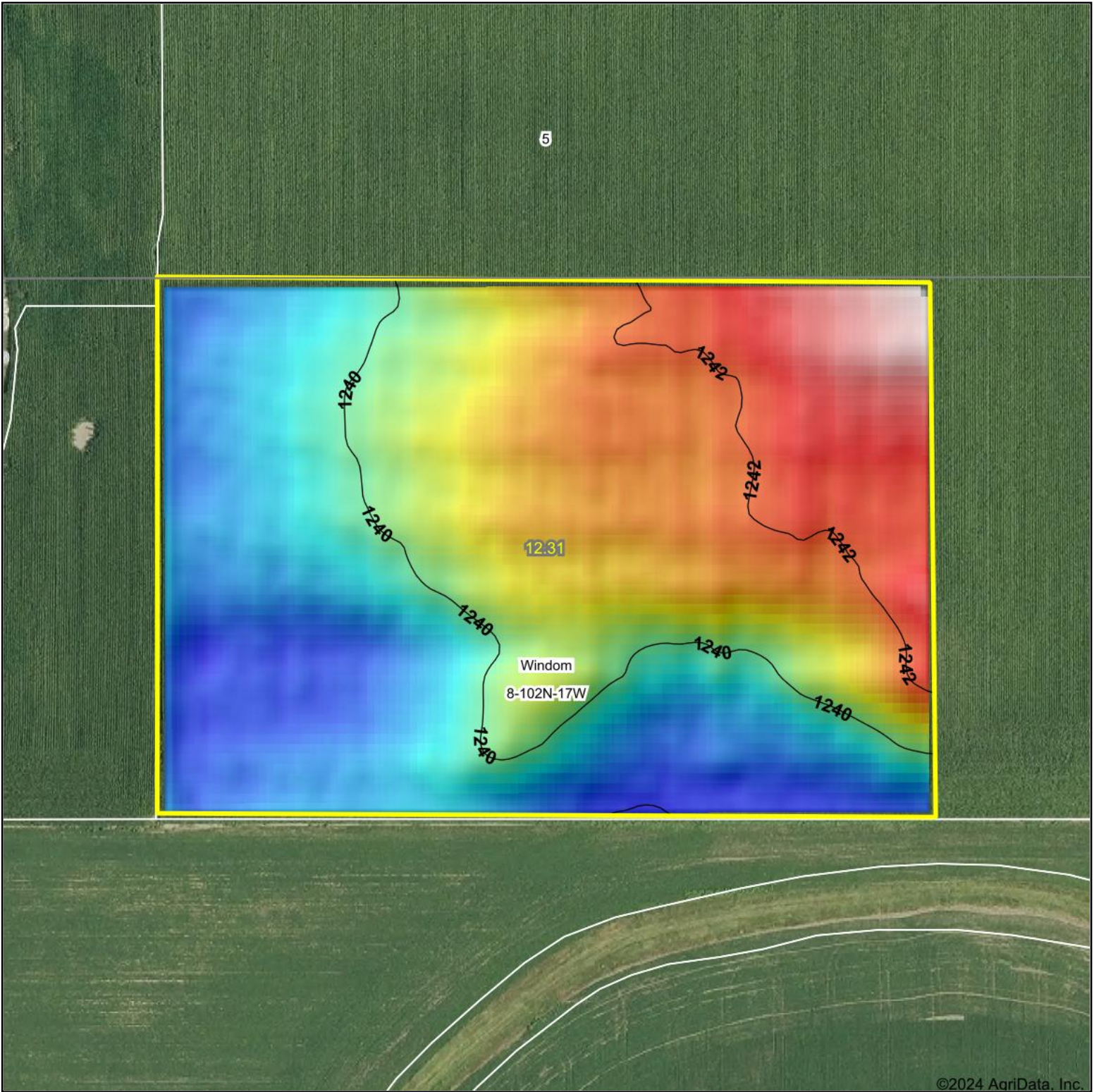
Code	Soil Description	Acres	Percent of field	PI Legend	Non-Irr Class *c	Productivity Index	*n NCCPI Overall	*n NCCPI Corn	*n NCCPI Small Grains	*n NCCPI Soybeans
1905	Brownsdale silt loam	4.64	37.7%		Illw	77	88	87	74	80
1904	Udolpho silt loam, loamy substratum	2.88	23.4%		Ilw	70	79	79	63	54
1841	Hayfield loam, loamy substratum	2.55	20.7%		Ils	79	75	75	62	51
307	Sargeant silt loam	1.25	10.2%		Illw	86	85	85	72	74
88	Clyde silty clay loam, 0 to 3 percent slopes	0.99	8.0%		Ilw	86	90	90	76	85
Weighted Average					2.48	77.4	*n 83.1	*n 82.7	*n 68.9	*n 67.7

*n: The aggregation method is "Weighted Average using all components"

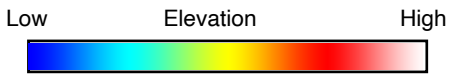
*c: Using Capabilities Class Dominant Condition Aggregation Method

Soils data provided by USDA and NRCS.

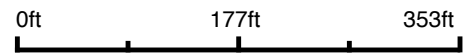
Topography Hillshade



©2024 AgriData, Inc.



Source: USGS 3 meter dem
 Interval(ft): 2
 Min: 1,238.0
 Max: 1,243.9
 Range: 5.9
 Average: 1,240.4
 Standard Deviation: 1.44 ft



8-102N-17W
Mower County
Minnesota

6/17/2024

Boundary Center: 43° 39' 31.71, -92° 53' 42.68



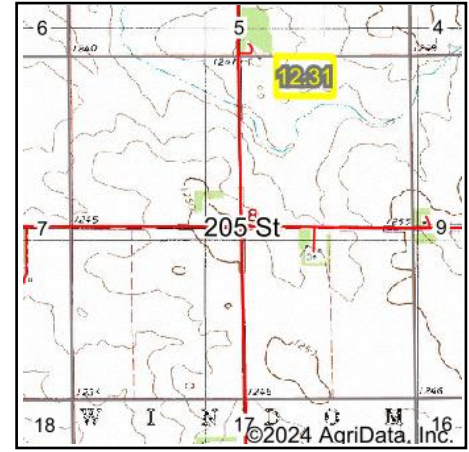
Maps Provided By:



© AgriData, Inc. 2023 www.AgriDataInc.com

Field borders provided by Farm Service Agency as of 5/21/2008.

Wetlands Map



State: **Minnesota**
 Location: **8-102N-17W**
 County: **Mower**
 Township: **Windom**
 Date: **6/17/2024**



Maps Provided By:



© AgriData, Inc. 2023 www.AgriDataInc.com



0ft 301ft 602ft

Classification Code	Type	Acres
	Total Acres	0.00

Data Source: National Wetlands Inventory website. U.S. DoI, Fish and Wildlife Service, Washington, D.C. <http://www.fws.gov/wetlands/>