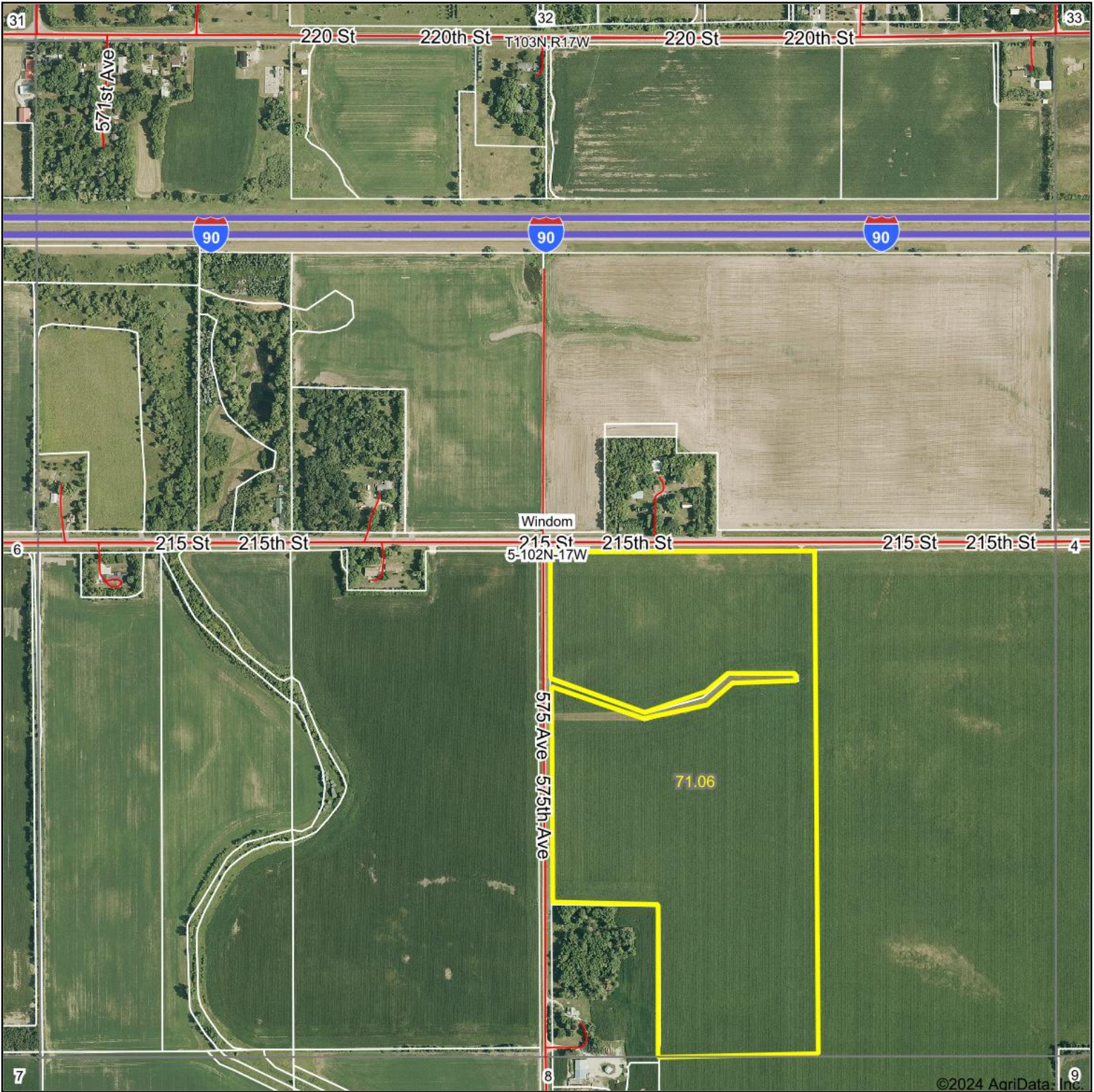
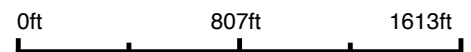


# Aerial Map

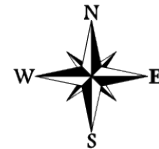


©2024 AgriData, Inc.

Boundary Center: 43° 39' 47.67, -92° 53' 46.89



5-102N-17W  
Mower County  
Minnesota

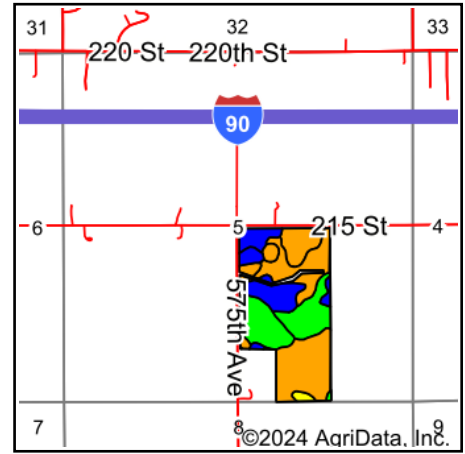
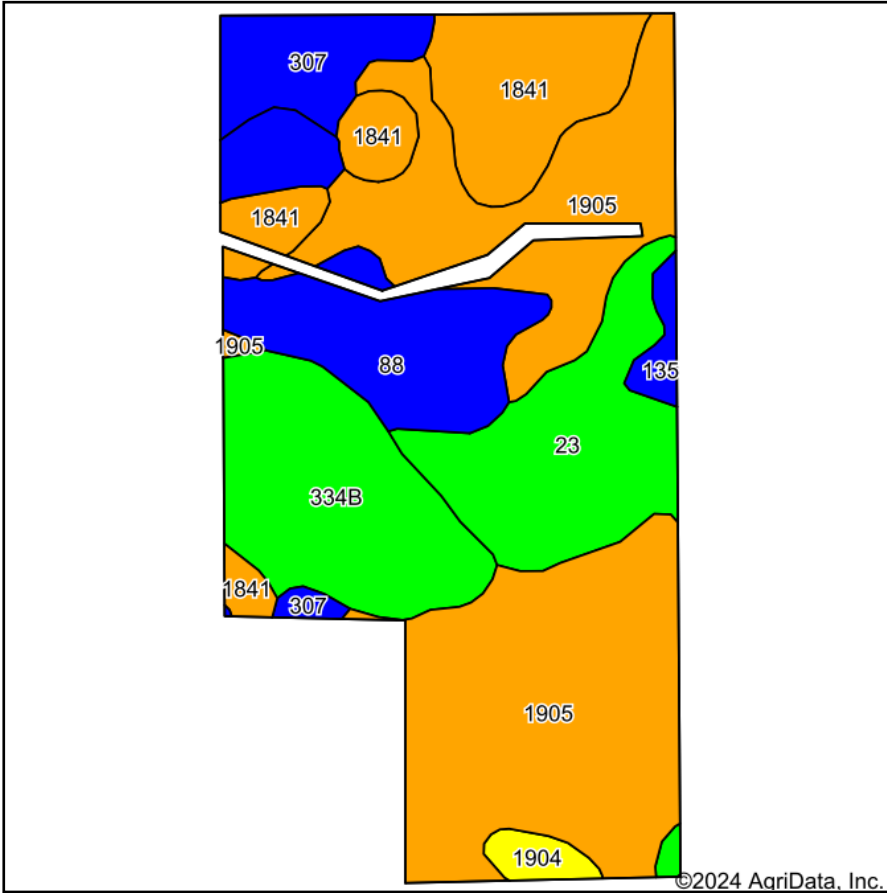


Maps Provided By:  
**surety**  
CUSTOMIZED ONLINE MAPPING  
© AgriData, Inc. 2023 www.AgriDataInc.com

6/17/2024

Field borders provided by Farm Service Agency as of 5/21/2008.

# Soils Map



State: **Minnesota**  
 County: **Mower**  
 Location: **5-102N-17W**  
 Township: **Windom**  
 Acres: **71.06**  
 Date: **6/17/2024**



Maps Provided By:



Soils data provided by USDA and NRCS.

©2024 AgriData, Inc.

© AgriData, Inc. 2023

www.AgriDataInc.com

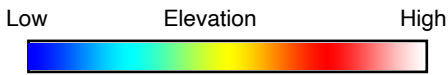
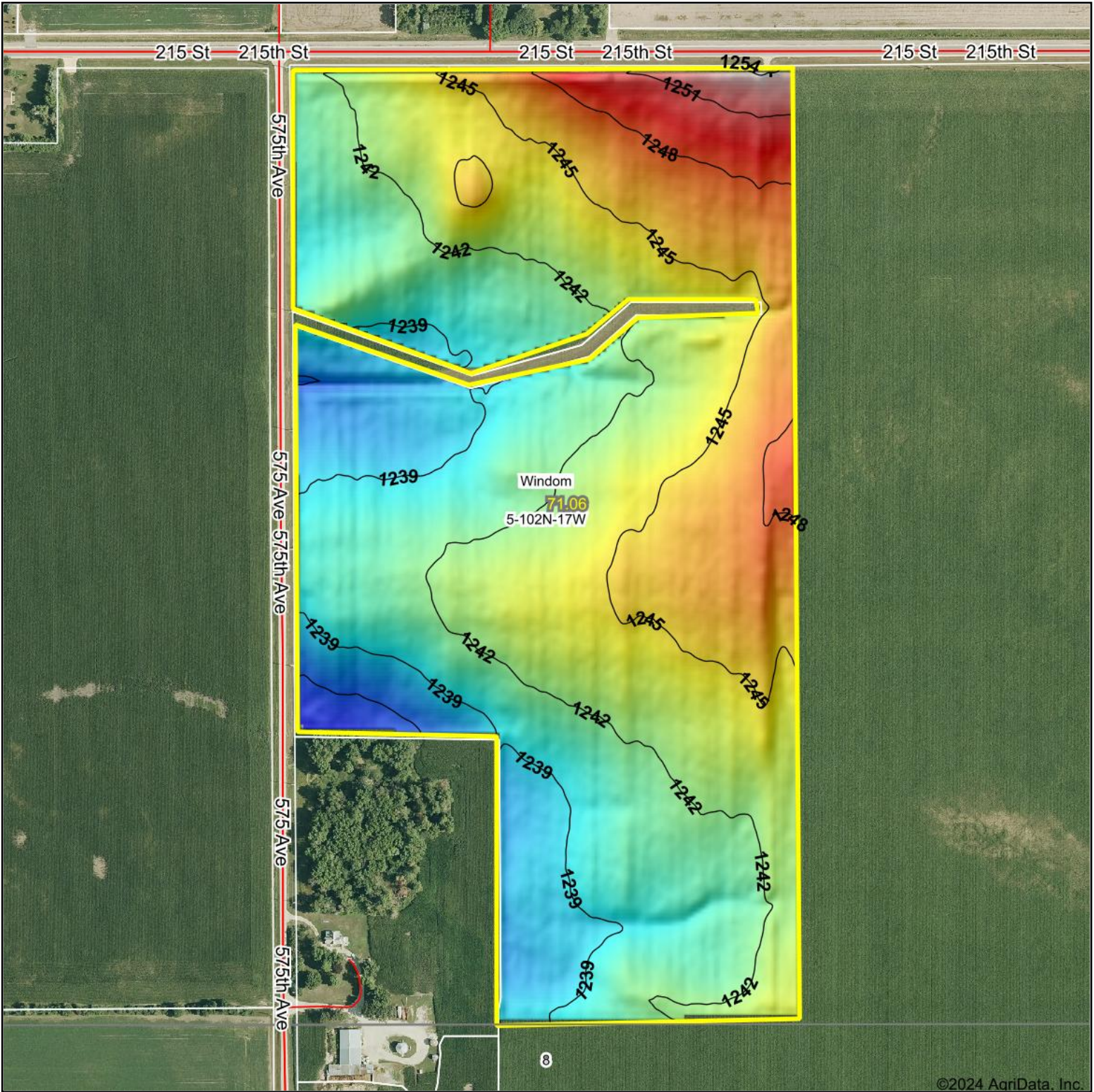
Area Symbol: MN099, Soil Area Version: 19

| Code                    | Soil Description                             | Acres | Percent of field | PI Legend | Non-Irr Class *c | Productivity Index | *n NCCPI Overall | *n NCCPI Corn  | *n NCCPI Small Grains | *n NCCPI Soybeans |
|-------------------------|--|-------|------------------|-----------|------------------|--------------------|------------------|----------------|-----------------------|-------------------|
| 1905                    | Brownsdale silt loam                         | 28.09 | 39.4%            |           | Illw             | 77                 | 88               | 87             | 74                    | 80                |
| 334B                    | Vlasaty silt loam, 1 to 4 percent slopes     | 9.99  | 14.1%            |           | Ile              | 95                 | 85               | 85             | 72                    | 74                |
| 23                      | Skyberg silt loam, 0 to 3 percent slopes     | 9.38  | 13.2%            |           | Iw               | 95                 | 82               | 82             | 64                    | 65                |
| 1841                    | Hayfield loam, loamy substratum              | 9.08  | 12.8%            |           | Ils              | 79                 | 75               | 75             | 62                    | 51                |
| 88                      | Clyde silty clay loam, 0 to 3 percent slopes | 8.73  | 12.3%            |           | Ilw              | 86                 | 90               | 90             | 76                    | 85                |
| 307                     | Sargeant silt loam                           | 4.05  | 5.7%             |           | Illw             | 86                 | 85               | 85             | 72                    | 74                |
| 1904                    | Udolpho silt loam, loamy substratum          | 0.91  | 1.3%             |           | Ilw              | 70                 | 79               | 79             | 63                    | 54                |
| 135                     | Donnan silt loam                             | 0.83  | 1.2%             |           | Ilw              | 84                 | 72               | 71             | 68                    | 60                |
| <b>Weighted Average</b> |  |       |                  |           | <b>2.32</b>      | <b>83.8</b>        | <b>*n 84.9</b>   | <b>*n 84.5</b> | <b>*n 70.8</b>        | <b>*n 73.2</b>    |

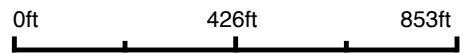
\*n: The aggregation method is "Weighted Average using all components"

\*c: Using Capabilities Class Dominant Condition Aggregation Method

# Topography Hillshade



Source: USGS 3 meter dem  
 Interval(ft): 3  
 Min: 1,234.2  
 Max: 1,254.6  
 Range: 20.4  
 Average: 1,242.5  
 Standard Deviation: 3.25 ft



**5-102N-17W**  
**Mower County**  
**Minnesota**

Boundary Center: 43° 39' 47.67, -92° 53' 46.89



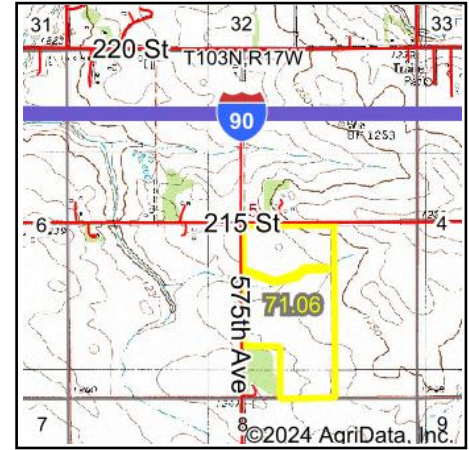
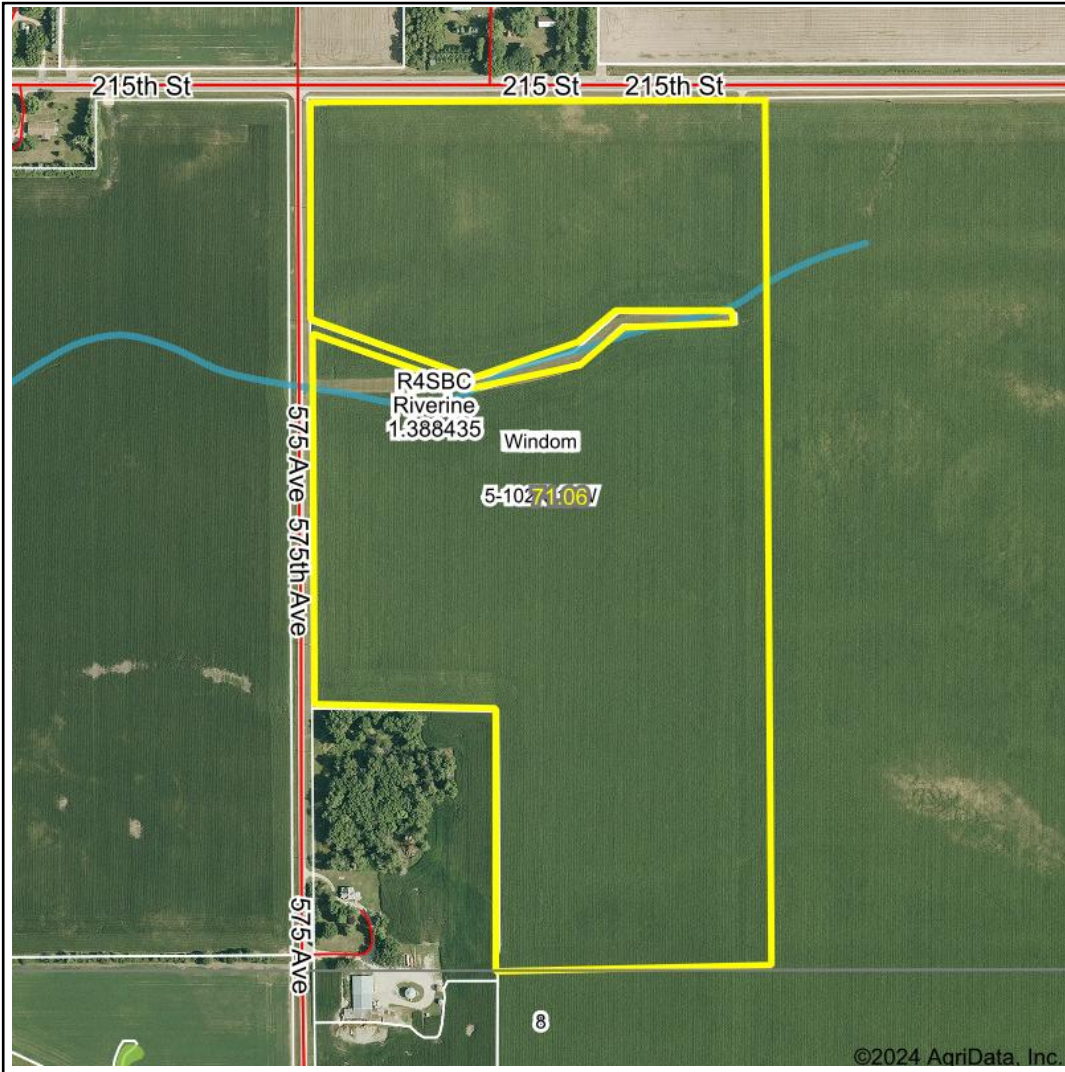
Maps Provided By:



© AgriData, Inc. 2023 www.AgriDataInc.com

Field borders provided by Farm Service Agency as of 5/21/2008.

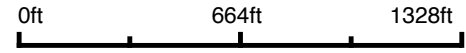
# Wetlands Map



**State:** Minnesota  
**Location:** 5-102N-17W  
**County:** Mower  
**Township:** Windom  
**Date:** 6/17/2024


**HIGH POINT**  
 LAND COMPANY  
 Maps Provided By:  

**surety**  
 CUSTOMIZED ONLINE MAPPING  
© AgriData, Inc. 2023 www.AgriDataInc.com



| Classification Code | Type     | Acres |
|---------------------|----------|-------|
| R4SBC               | Riverine | 0.38  |
| Total Acres         |          | 0.38  |

Data Source: National Wetlands Inventory website. U.S. DoI, Fish and Wildlife Service, Washington, D.C. <http://www.fws.gov/wetlands/>