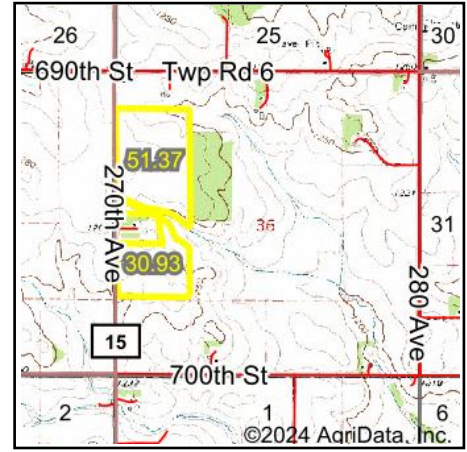
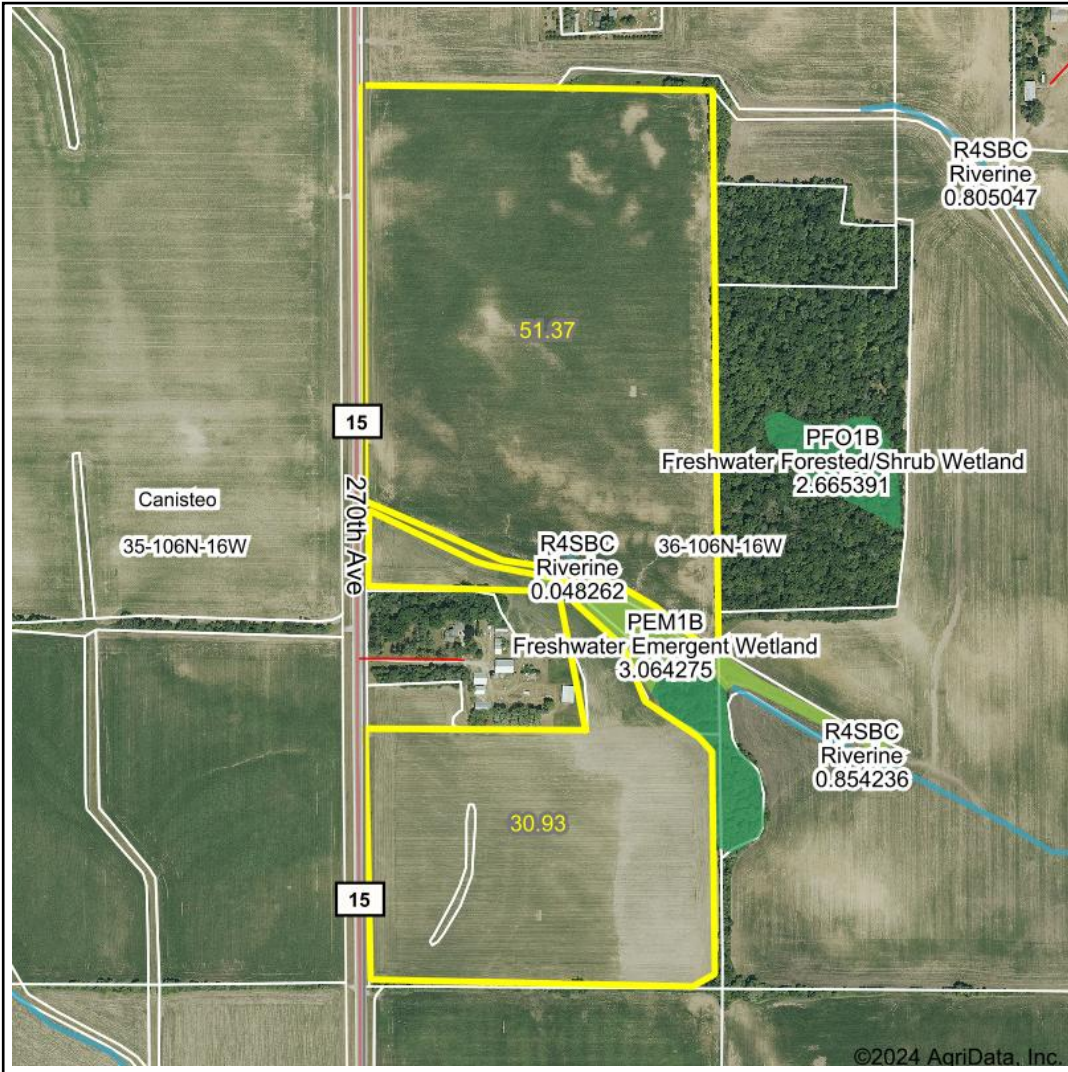


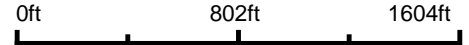
Wetlands Map



State: Minnesota
Location: 36-106N-16W
County: Dodge
Township: Canisteo
Date: 6/19/2024


HIGH POINT
 LAND COMPANY
 Maps Provided By:

surety
 CUSTOMIZED ONLINE MAPPING
© AgriData, Inc. 2023 www.AgriDataInc.com



Classification Code	Type	Acres
PEM1B	Freshwater Emergent Wetland	0.14
R4SBC	Riverine	0.04
PFO1B	Freshwater Forested/Shrub Wetland	0.00
Total Acres		0.18

Data Source: National Wetlands Inventory website. U.S. DoI, Fish and Wildlife Service, Washington, D.C. <http://www.fws.gov/wetlands/>