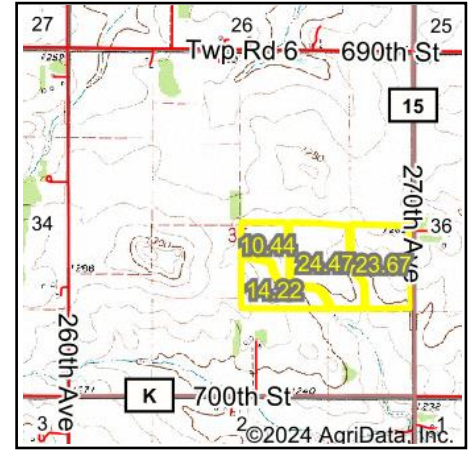


Wetlands Map



State: Minnesota
Location: 35-106N-16W
County: Dodge
Township: Canisteo
Date: 6/18/2024


HIGH POINT
 LAND COMPANY
 Maps Provided By:

surety
 CUSTOMIZED ONLINE MAPPING
© AgriData, Inc. 2023 www.AgriDataInc.com



| Classification Code | Type | Acres |
|---------------------|----------|-------|
| R4SBC | Riverine | 0.42 |
| Total Acres | | 0.42 |

Data Source: National Wetlands Inventory website. U.S. DoI, Fish and Wildlife Service, Washington, D.C. <http://www.fws.gov/wetlands/>