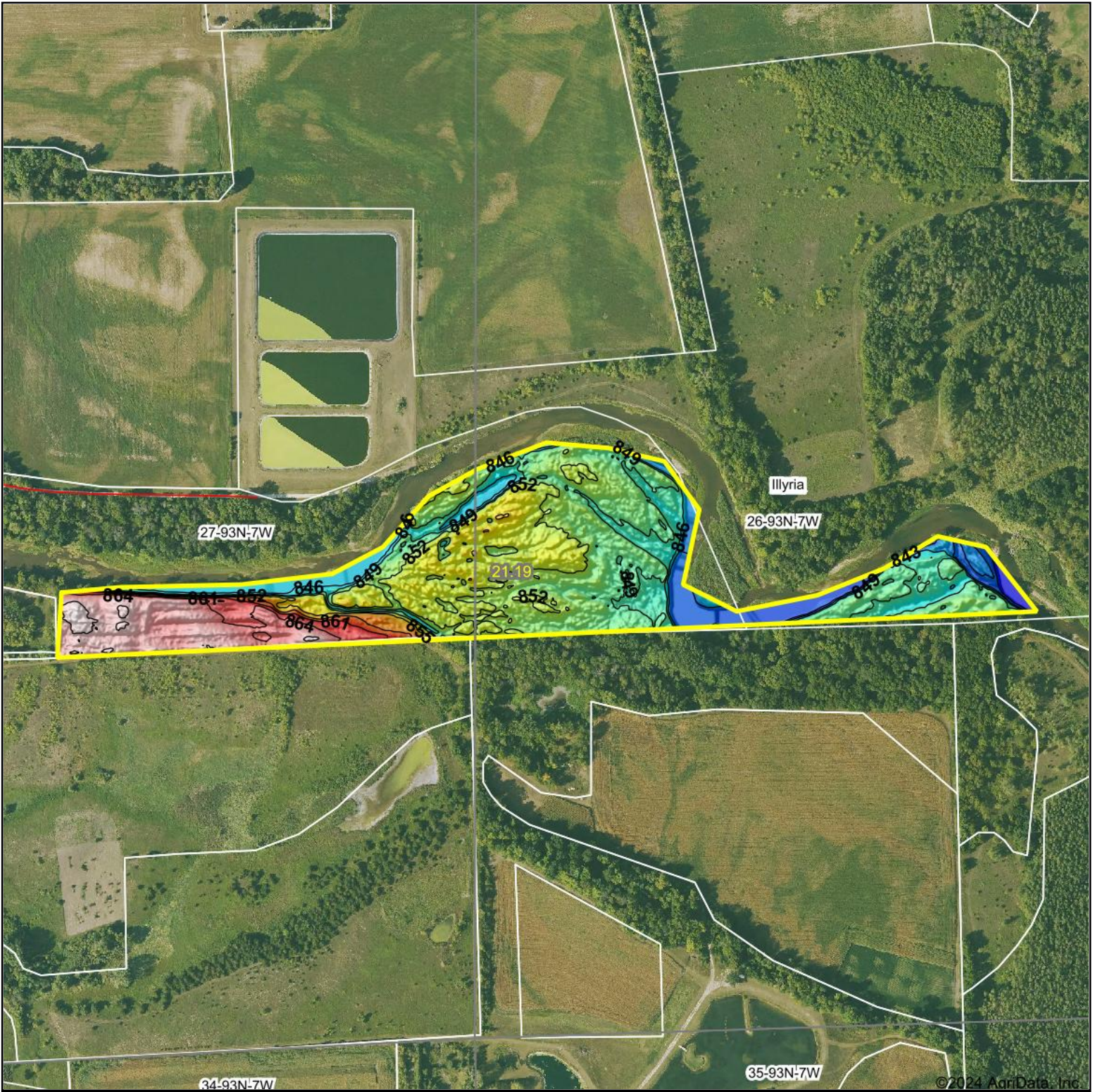


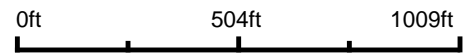
Topography Hillshade



©2024 AgriData, Inc.



Source: USGS 1 meter dem



Interval(ft): 3

Min: 839.5

Max: 868.1

Range: 28.6

Average: 852.3

Standard Deviation: 6.69 ft



26-93N-7W
Fayette County
Iowa

6/26/2024

Boundary Center: 42° 50' 13.91, -91° 38' 46.61



Maps Provided By:



© AgriData, Inc. 2023 www.AgriDataInc.com

Field borders provided by Farm Service Agency as of 5/21/2008.