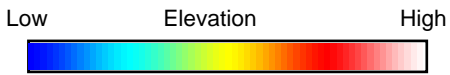
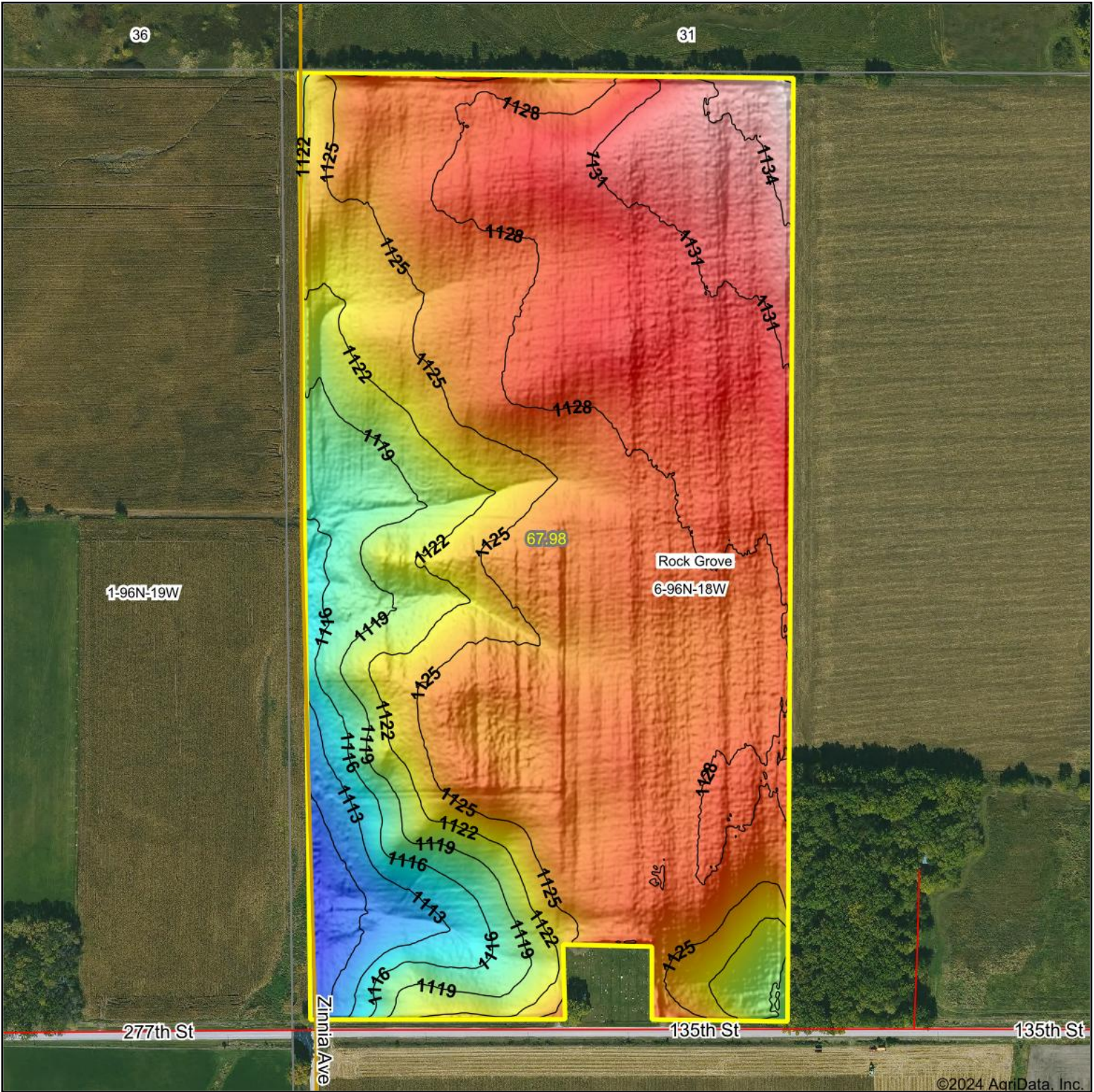


# Topography Hillshade



Source: USGS 1 meter dem

Interval(ft): 3

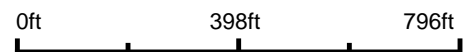
Min: 1,107.0

Max: 1,137.2

Range: 30.2

Average: 1,125.1

Standard Deviation: 5.28 ft



6/10/2024

**6-96N-18W**  
**Floyd County**  
**Iowa**

Boundary Center: 43° 9' 57.48, -93° 1' 18.09



Maps Provided By:



© AgriData, Inc. 2023

www.AgriDataInc.com