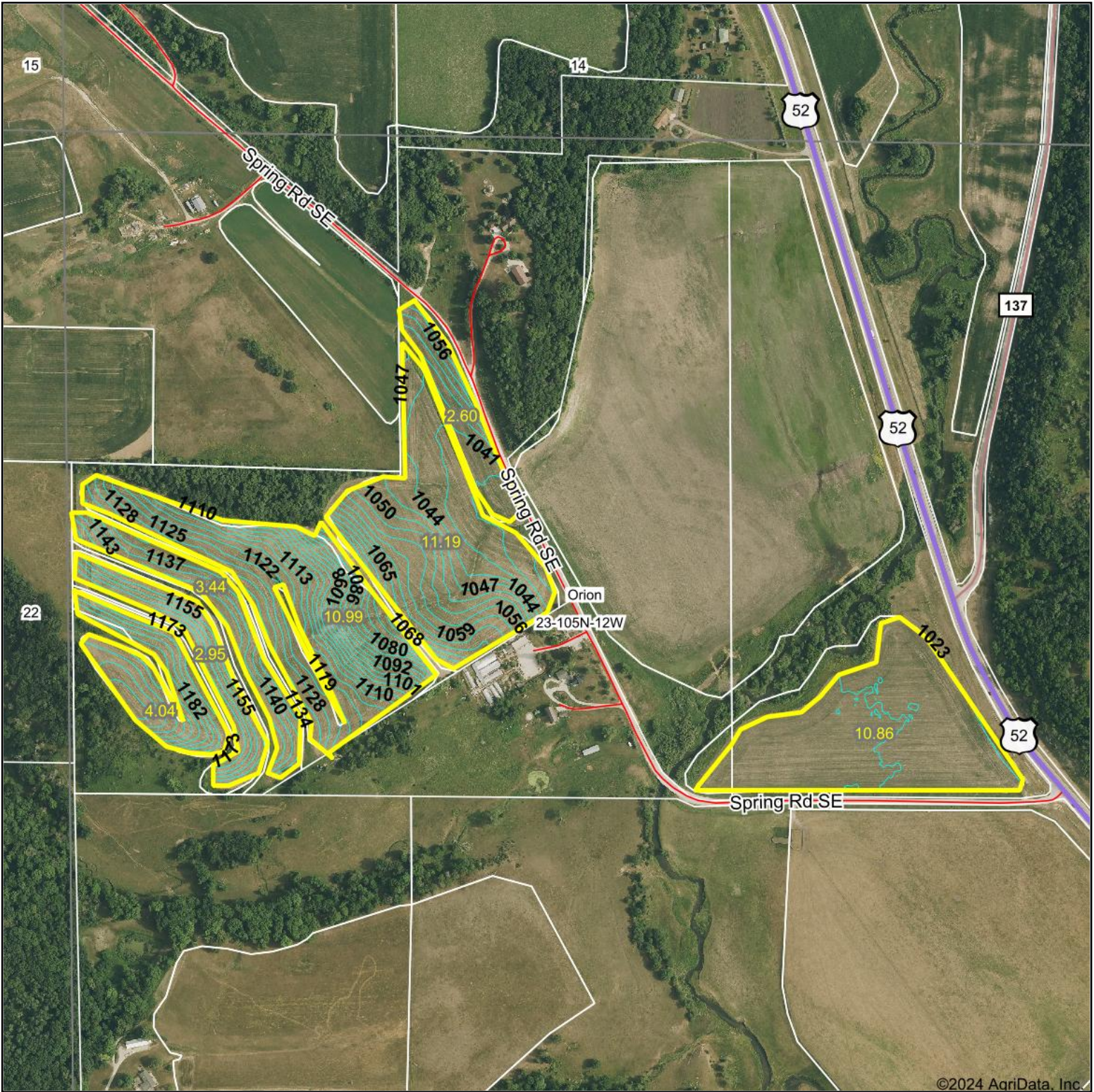


Topography Contours



©2024 AgriData, Inc.

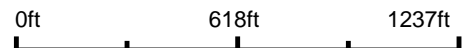


HIGH POINT
LAND COMPANY

Maps Provided By:
 **surety**
CUSTOMIZED ONLINE MAPPING

© AgriData, Inc. 2023 www.AgriDataInc.com

Source: USGS 3 meter dem
Interval(ft): 3.0
Min: 1,017.9
Max: 1,205.3
Range: 187.4
Average: 1,082.1
Standard Deviation: 56.27 ft



6/19/2024

23-105N-12W
Olmsted County
Minnesota

Boundary Center: 43° 53' 10.04, -92° 13' 53.78

Field borders provided by Farm Service Agency as of 5/21/2008.