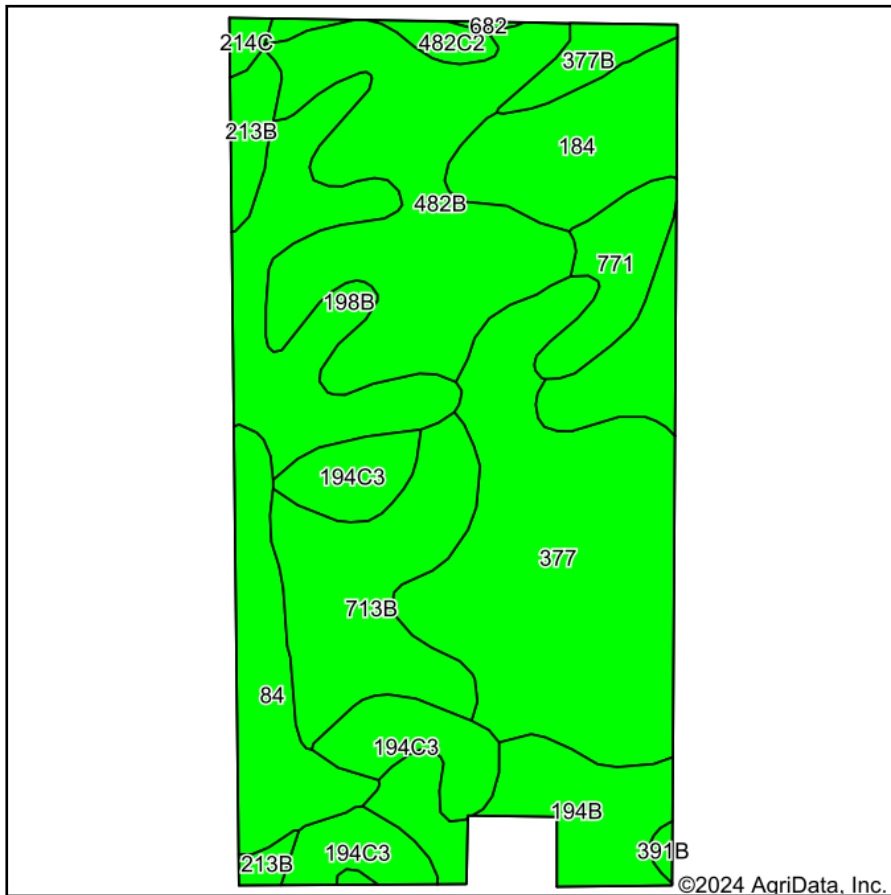
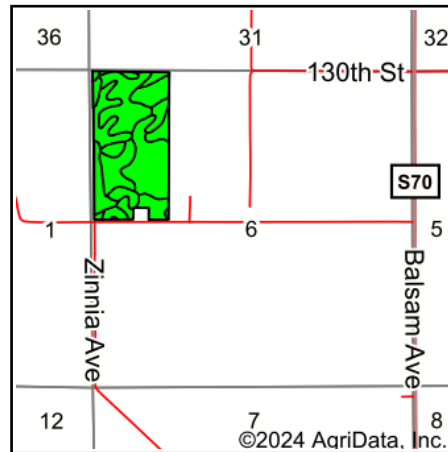


# Soils Map



Soils data provided by USDA and NRCS.



State: **Iowa**  
 County: **Floyd**  
 Location: **6-96N-18W**  
 Township: **Rock Grove**  
 Acres: **65.62**  
 Date: **6/13/2024**



Maps Provided By:



© AgriData, Inc. 2023

www.AgriDataInc.com



Area Symbol: IA067, Soil Area Version: 29

Code	Soil Description	Acres	Percent of field	CSR2 Legend	Non-Irr Class *c	CSR2**	CSR	*n NCCPI Overall	*n NCCPI Corn	*n NCCPI Small Grains	*n NCCPI Soybeans
377	Dinsdale silty clay loam, 0 to 2 percent slopes	14.48	22.1%		le	99	95	86	86	71	74
482B	Racine loam, 2 to 5 percent slopes	11.43	17.4%		lle	76	79	66	66	55	55
184	Klinger silty clay loam, 1 to 4 percent slopes	6.71	10.2%		lw	95	95	89	89	79	83
713B	Winneshiek silt loam, 30 to 40 inches to limestone, till plain, 2 to 5 percent slopes	6.54	10.0%		lle	44	69	59	59	53	44
198B	Floyd loam, 1 to 4 percent slopes	6.32	9.6%		llw	89	74	88	83	66	88
194C3	Norville silt loam, 5 to 9 percent slopes, severely eroded	5.19	7.9%		Ive	70	39	67	67	61	45
194B	Norville silty clay loam, 2 to 5 percent slopes	4.55	6.9%		lle	80	74	76	75	73	58
84	Clyde silty clay loam, 0 to 3 percent slopes	4.29	6.5%		llw	88	77	90	90	76	85
771	Waubeek silt loam, 0 to 2 percent slopes	2.29	3.5%		I	93	90	85	85	70	77
213B	Rockton loam, 30 to 40 inches to limestone, till plain, 2 to 5 percent slopes	1.38	2.1%		lle	49	74	58	58	51	41
377B	Dinsdale silty clay loam, 2 to 5 percent slopes	1.13	1.7%		lle	94	90	88	88	68	75

Soils data provided by USDA and NRCS.



Code	Soil Description	Acres	Percent of field	CSR2 Legend	Non-Irr Class *c	CSR2**	CSR	*n NCCPI Overall	*n NCCPI Corn	*n NCCPI Small Grains	*n NCCPI Soybeans	
482C2	Racine loam, 5 to 9 percent slopes, moderately eroded	0.76	1.2%		Ille	78	62	88	88	73	74	
214C	Rockton loam, 20 to 30 inches to limestone, till plain, 5 to 9 percent slopes	0.31	0.5%		Ille	40	38	50	50	45	35	
391B	Clyde-Floyd complex, 1 to 4 percent slopes	0.17	0.3%		Ilw	87	73	89	87	72	86	
682	Maxfield silt loam, 0 to 2 percent slopes	0.07	0.1%		Ilw	83		79	79	61	67	
<b>Weighted Average</b>						<b>1.82</b>	<b>81.9</b>	<b>*-</b>	<b>*n 77.7</b>	<b>*n 77.1</b>	<b>*n 65.8</b>	<b>*n 66.6</b>

\*\*IA has updated the CSR values for each county to CSR2.

\*- CSR weighted average cannot be calculated on the current soils data, use prior data version for csr values.

\*n: The aggregation method is "Weighted Average using all components"

\*c: Using Capabilities Class Dominant Condition Aggregation Method