

# LAND

# FOR SALE

Ralls County, MO

**256.9**  
+/- ACRES

Broker- Jacob Hart: Lic# MN-40438432 IA-B635461000 WI- 58203-90 MO-2022039556 CO-ER100093474 Phone# 507-259-1065

SCAN FOR MORE INFO



Real Estate License:  
2020033844

109 E Main St  
Perry, MO 63462

**LUKE MITCHELL**  
**573-541-1232**

Luke@HighPointLandCompany.com



**HIGH POINT**  
**LAND COMPANY**

[www.HIGHPOINTLANDCOMPANY.COM](http://www.HIGHPOINTLANDCOMPANY.COM)





# Summary of Property

## 256.9+/- Acres • Ralls County, MO

**Listing Price: \$1,823,990**

### DESCRIPTION

Big farms like this don't come to the market very often in Ralls County, Missouri, so here is your chance – don't miss out! This is a must-see farm tract with great income and hunting in the heart of big buck country.

Take a look at the aerial photo and you will immediately notice that this farm hunts extremely large with so many possibilities on stand locations and food plots. Several people can easily hunt at the same time and have plenty of space. A quick glance at trail camera history and you will see that this farm will produce big bucks year after year! The fields are surrounded by a big block of timber where deer and turkeys feel secure to feed. Very few farms can be hunted on almost any wind direction making this farm a gem!

There are multiple entrances on the south side of the farm coming off Kingsville Lane offering easy access for equipment, access for hunting, or even to build! The farm is currently planted in corn for the 2024 season with approximately 150+/- acres tillable being cash rented at \$200 an acre.

For more information contact Missouri Land Specialist Luke Mitchell at 573-541-1232 or email him at [luke@highpointlandcompany.com](mailto:luke@highpointlandcompany.com).

**Property Address:** TBD Kingsville Ln, New London, MO 63459

### Property Features:

- Located just west of New London, 1.5 miles off of Hwy 61
- 150+/- acres tillable
- Small pond and creek for water source
- Electric very close to property
- Perfect secluded food plot locations
- Many pinch points, funnels, and travel corridors for stand locations
- Great deer and turkey numbers
- Perfect home sites with beautiful views

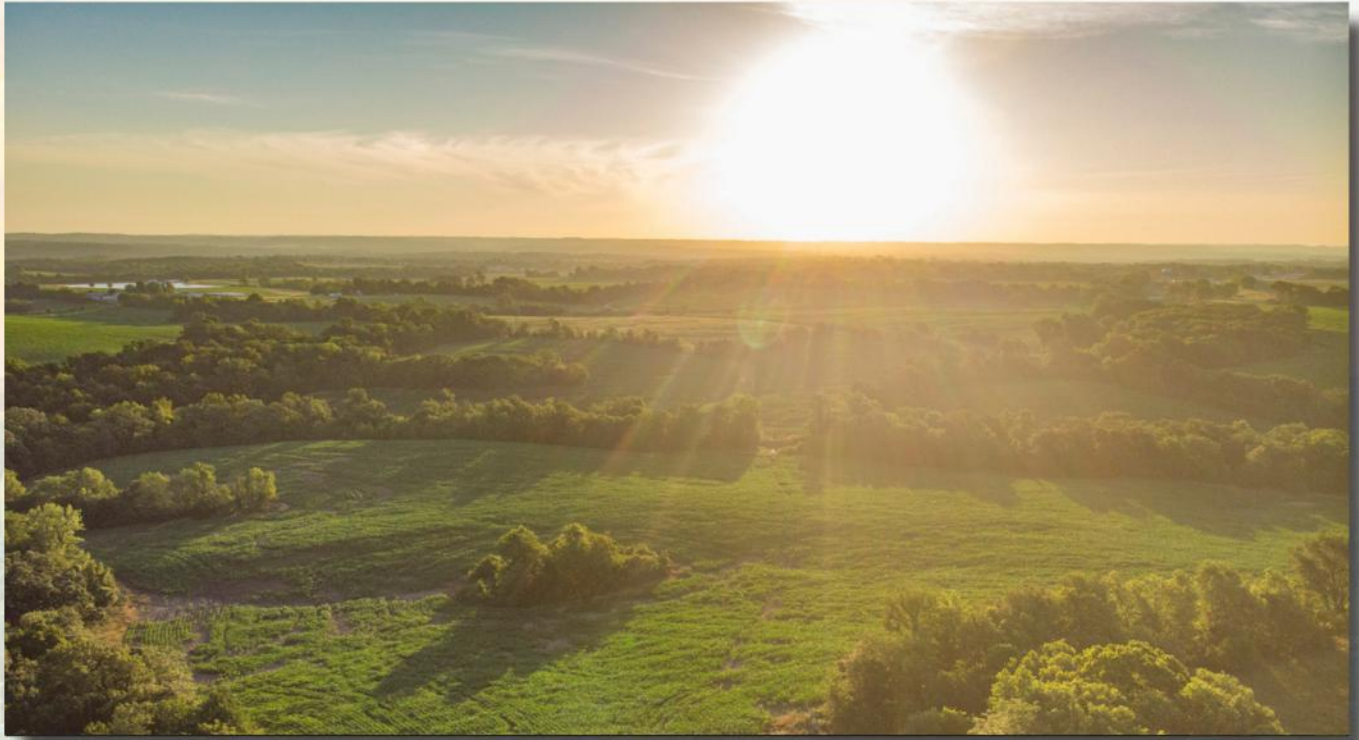
### Driving Directions:

From New London, MO (intersection of Hwy A & US Hwy 61), take Sundance Dr. south approximately 0.3 miles, then turn west onto Kingsville Rd. for approximately 1.4 miles. The farm is ahead on the north & south sides of the road.

From Hannibal, MO, take US Hwy 61 south approximately 7.6 miles then turn west onto Kingsville Rd. for approximately 1.4 miles. The farm is ahead on the north & south sides of the road.

75,000  
ACRES SOLD

# Property Photos



75,000  
ACRES SOLD

# Property Photos



75,000  
ACRES SOLD

# Property Photos



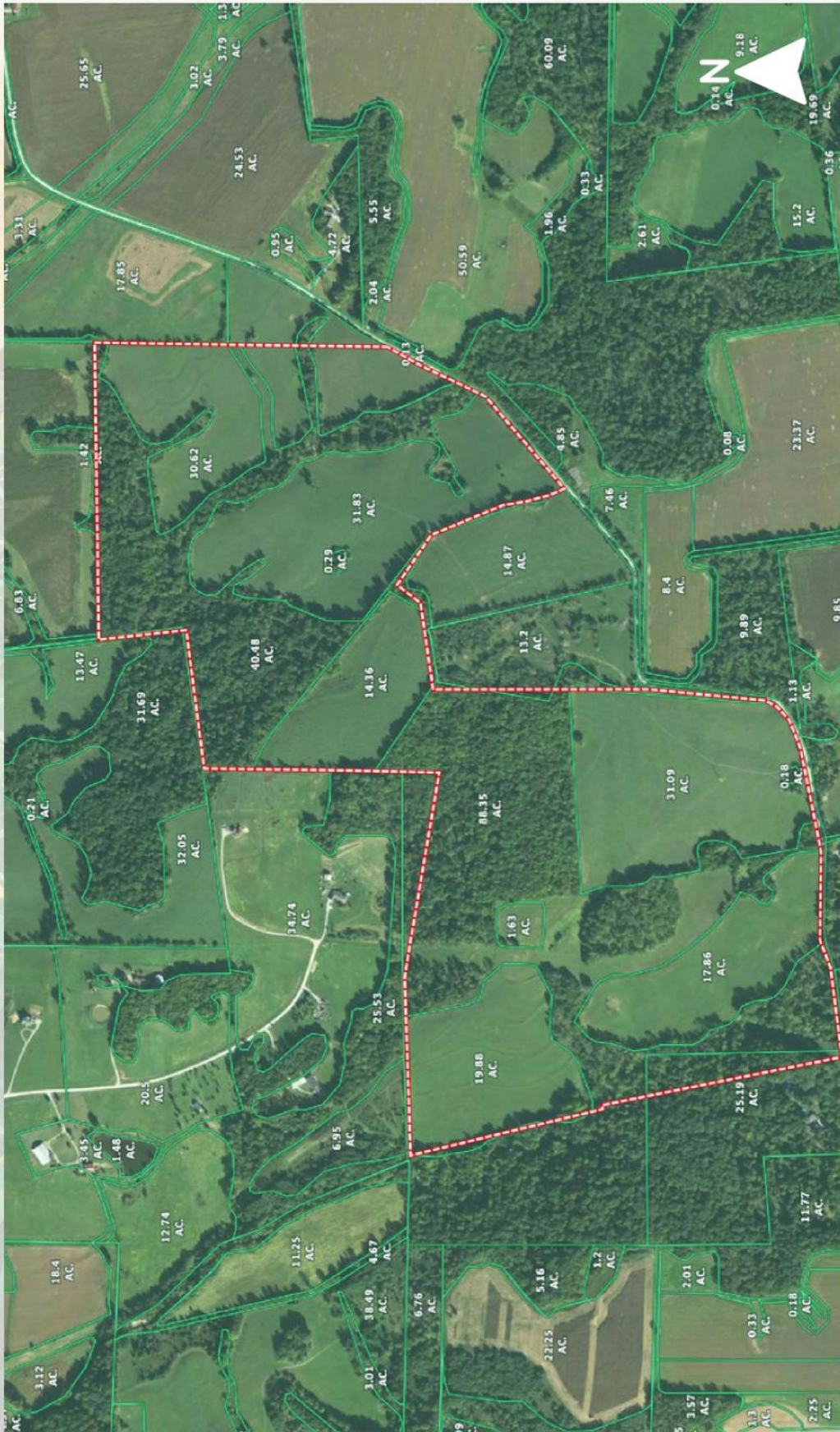
75,000  
ACRES SOLD

# Train Cam Photos



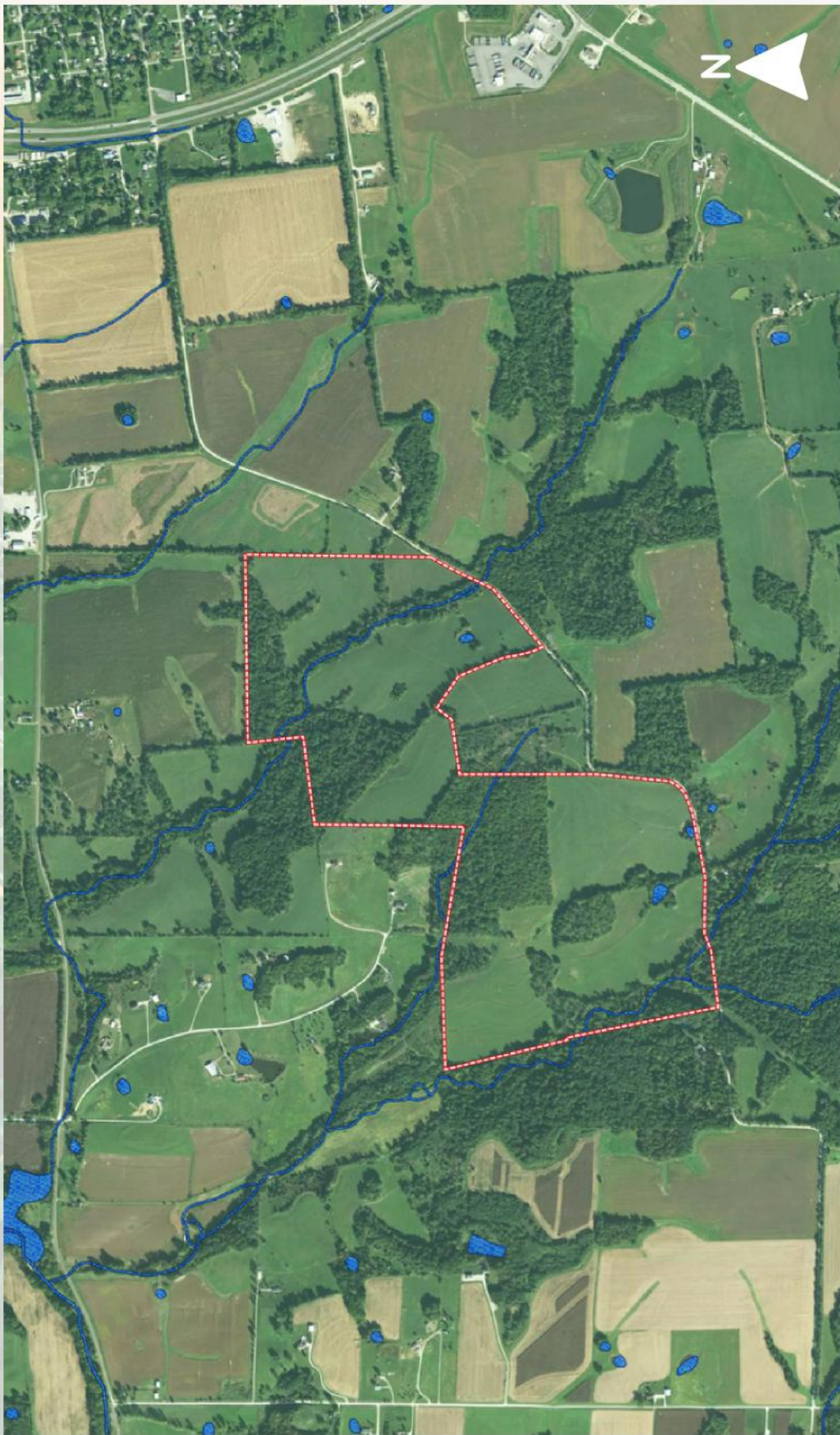
75,000  
ACRES SOLD

# Aerial Map



**75,000**  
ACRES SOLD

# Water Features Map





**256.9**  
**+/- ACRES**

**RALLS COUNTY, MO**

Broker- Jacob Hart: Lic# MN-40438432 IA-B635461000 WI- 58203-90 MO-2022039556 CO-ER100093474 Phone# 507-259-1065

SCAN FOR MORE INFO



Real Estate License:  
2020033844

109 E Main St  
Perry, MO 63462

**LUKE MITCHELL**  
**573-541-1232**

Luke@HighPointLandCompany.com



**HIGH POINT**  
**LAND COMPANY**

[www.HIGHPOINTLANDCOMPANY.COM](http://www.HIGHPOINTLANDCOMPANY.COM)

