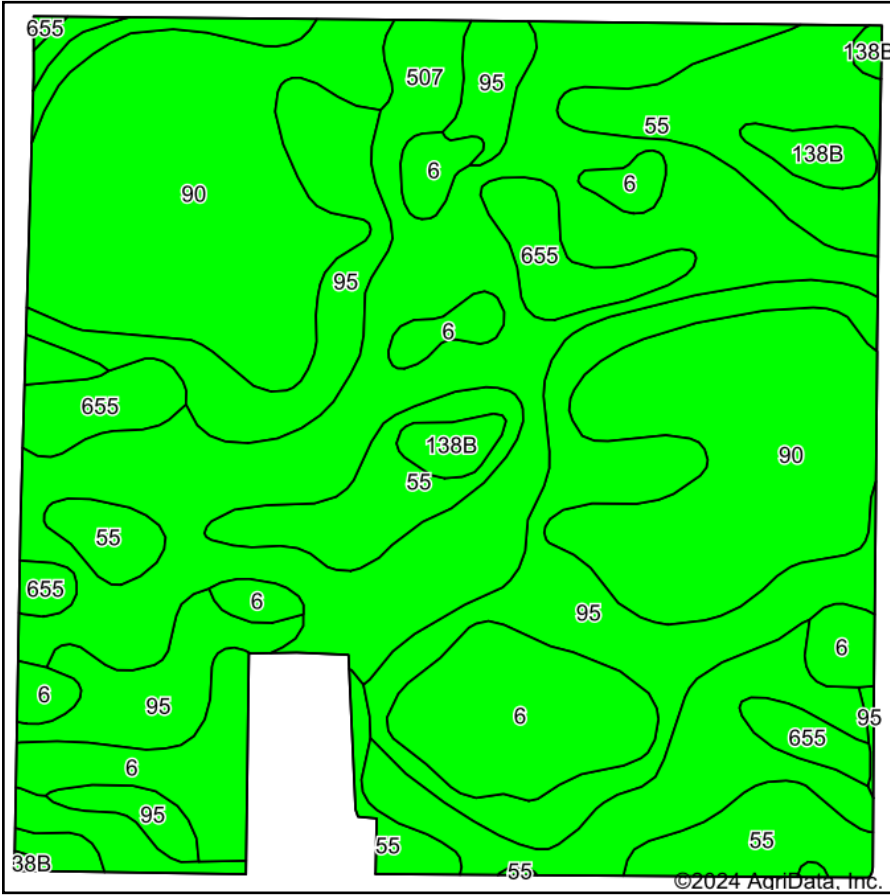
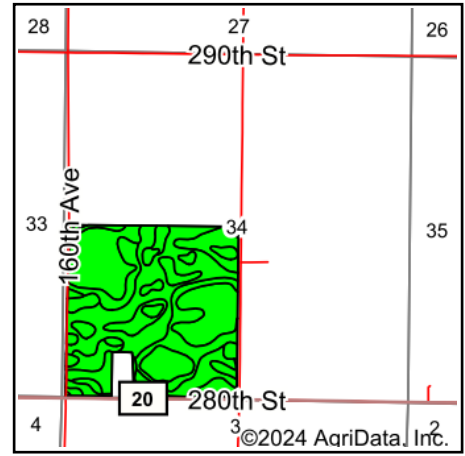


Soils Map



Soils data provided by USDA and NRCS.



State: **Iowa**
 County: **Kossuth**
 Location: **34-97N-28W**
 Township: **Portland**
 Acres: **151.17**
 Date: **3/6/2024**



Maps Provided By:



Area Symbol: IA109, Soil Area Version: 30

| Code | Soil Description | Acres | Percent of field | CSR2 Legend | Non-Irr Class *c | CSR2** | *n NCCPI Overall | *n NCCPI Corn | *n NCCPI Small Grains | *n NCCPI Soybeans | |
|-------------------------|--|-------|------------------|-------------|------------------|-------------|------------------|----------------|-----------------------|-------------------|----------------|
| 507 | Canisteo clay loam, 0 to 2 percent slopes | 44.34 | 29.3% | | Ilw | 84 | 81 | 71 | 65 | 81 | |
| 90 | Okoboji mucky silt loam, 0 to 1 percent slopes | 34.84 | 23.0% | | Illw | 56 | 71 | 70 | 54 | 71 | |
| 95 | Harps clay loam, 0 to 2 percent slopes | 28.75 | 19.0% | | Ilw | 72 | 82 | 70 | 63 | 82 | |
| 55 | Nicollet clay loam, 1 to 3 percent slopes | 17.86 | 11.8% | | lw | 89 | 81 | 81 | 74 | 81 | |
| 6 | Okoboji silty clay loam, 0 to 1 percent slopes | 15.95 | 10.6% | | Illw | 59 | 77 | 74 | 74 | 74 | |
| 655 | Crippin loam, 1 to 3 percent slopes | 6.80 | 4.5% | | le | 91 | 86 | 71 | 68 | 86 | |
| 138B | Clarion loam, 2 to 6 percent slopes | 2.63 | 1.7% | | lle | 89 | 83 | 78 | 72 | 83 | |
| Weighted Average | | | | | | 2.17 | 73.6 | *n 78.7 | *n 72.2 | *n 64.4 | *n 78.4 |

**IA has updated the CSR values for each county to CSR2.

*n: The aggregation method is "Weighted Average using all components"

*c: Using Capabilities Class Dominant Condition Aggregation Method