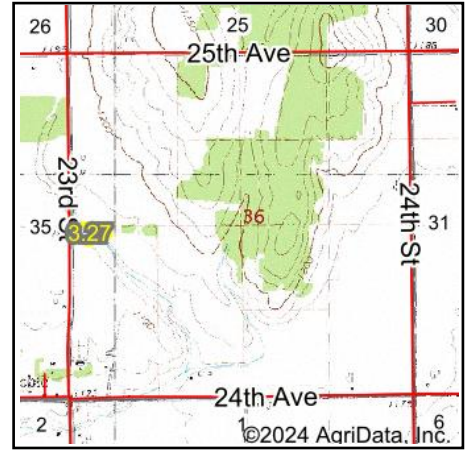
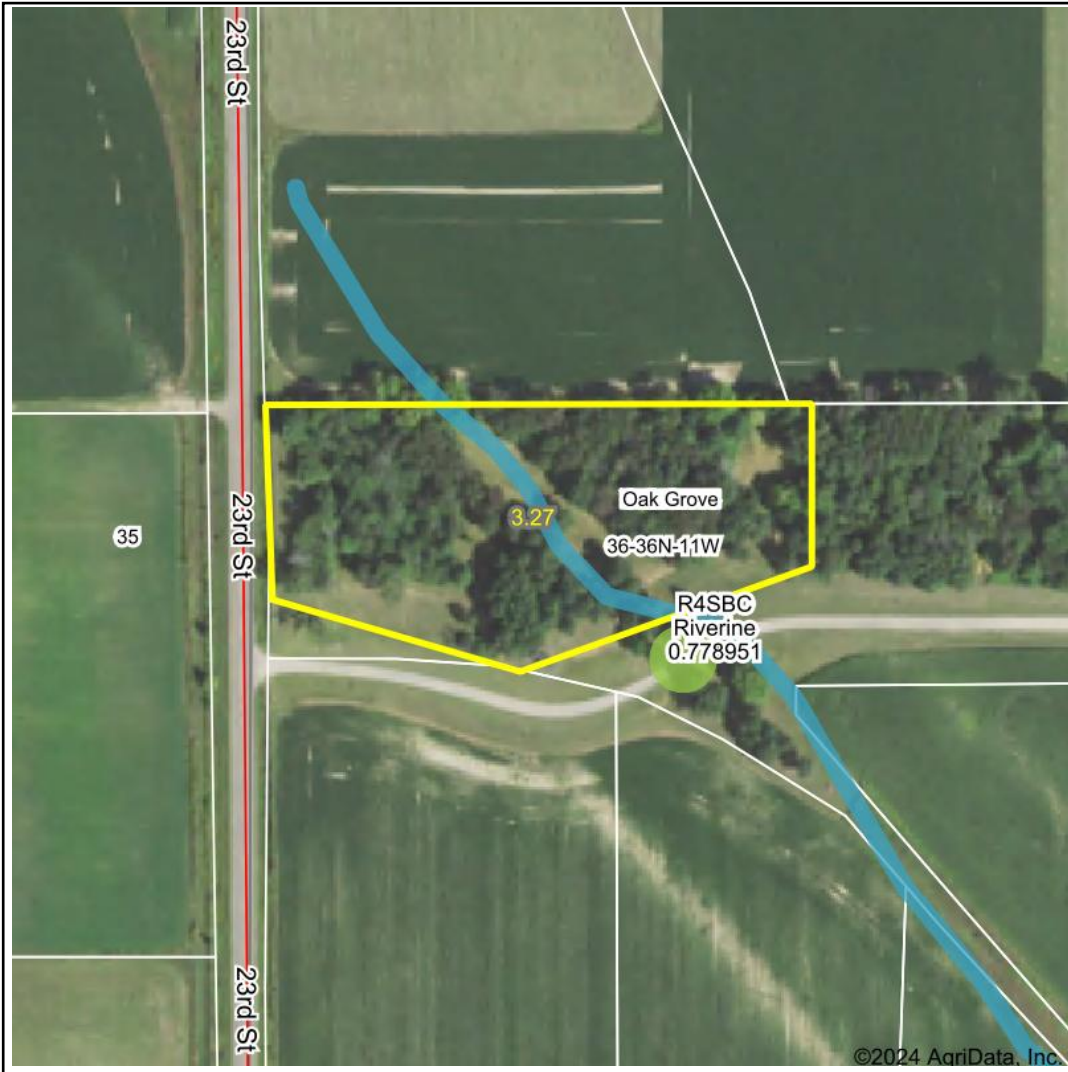


Wetlands Map



State: Wisconsin
Location: 36-36N-11W
County: Barron
Township: Oak Grove
Date: 5/21/2024


HIGH POINT
 LAND COMPANY
 Maps Provided By:

surety
 CUSTOMIZED ONLINE MAPPING
© AgriData, Inc. 2023 www.AgriDataInc.com



Classification Code	Type	Acres
R4SBC	Riverine	0.16
Total Acres		0.16

Data Source: National Wetlands Inventory website. U.S. DoI, Fish and Wildlife Service, Washington, D.C. <http://www.fws.gov/wetlands/>