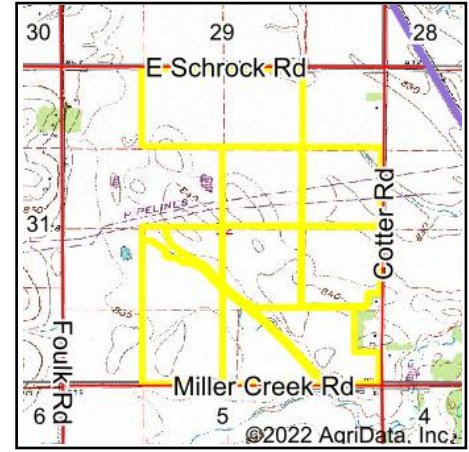
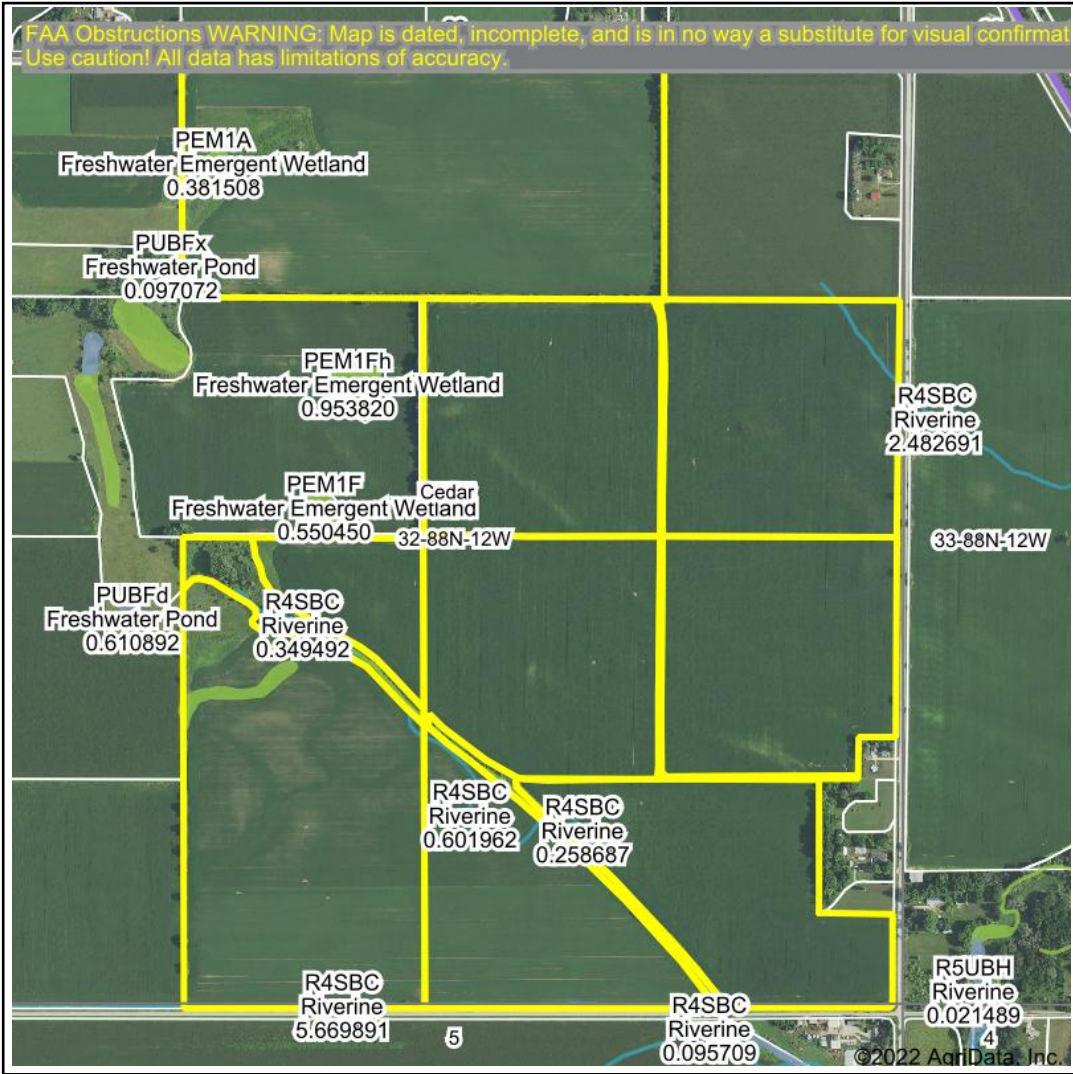


# Wetlands Map



**State:** Iowa  
**Location:** 32-88N-12W  
**County:** Black Hawk  
**Township:** Cedar  
**Date:** 7/24/2022

**HIGH POINT**  
 LAND COMPANY  
 Maps Provided By:  
**surety**  
CUSTOMIZED ONLINE MAPPING  
© AgriData, Inc. 2021 www.AgriDataInc.com



0ft                      1217ft                      2434ft

Classification Code	Type	Acres
R4SBC	Riverine	2.79
PEM1A	Freshwater Emergent Wetland	1.63
PEM1Cx	Freshwater Emergent Wetland	1.35
<b>Total Acres</b>		<b>5.77</b>

Data Source: National Wetlands Inventory website. U.S. DoI, Fish and Wildlife Service, Washington, D.C. <http://www.fws.gov/wetlands/>