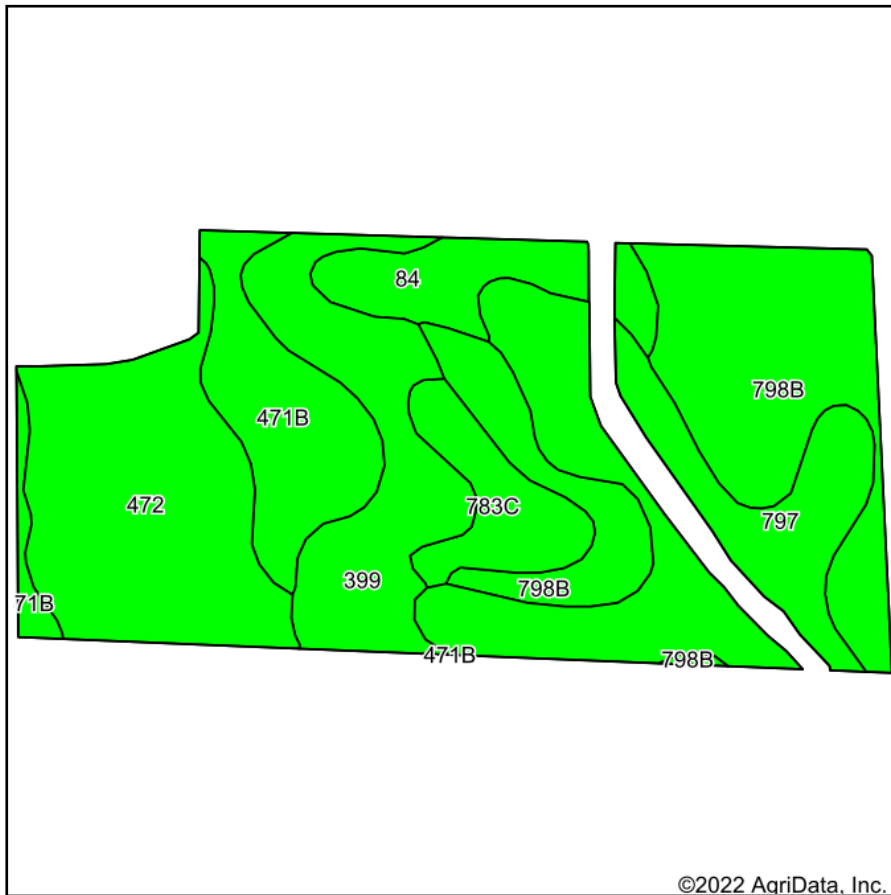
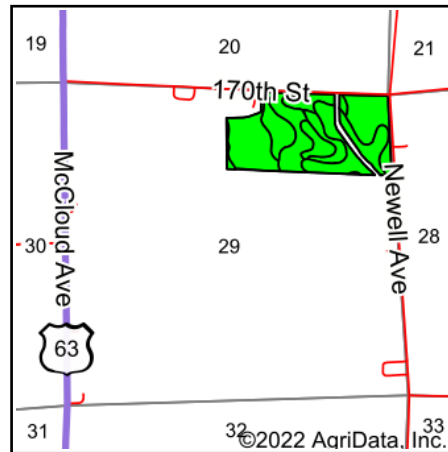


Soils Map



©2022 AgriData, Inc.

Soils data provided by USDA and NRCS.



State: **Iowa**
 County: **Chickasaw**
 Location: **29-96N-12W**
 Township: **Jacksonville**
 Acres: **64.5**
 Date: **11/2/2022**



Maps Provided By:



© AgriData, Inc. 2021

www.AgriDataInc.com



Area Symbol: IA037, Soil Area Version: 27

Code	Soil Description	Acres	Percent of field	CSR2 Legend	Non-Irr Class *c	CSR2**	CSR	*n NCCPI Overall	*n NCCPI Corn	*n NCCPI Small Grains	*n NCCPI Soybeans
798B	Protivin loam, 1 to 4 percent slopes	14.99	23.2%		Ile	61	56	80	80	55	64
797	Jameston silty clay loam, 0 to 2 percent slopes	13.74	21.3%		llw	73	56	90	84	73	90
472	Havana loam, 0 to 2 percent slopes	12.67	19.6%		llw	76	74	98	98	84	95
399	Readlyn silt loam, 1 to 3 percent slopes	8.53	13.2%		lw	91		79	79	54	65
471B	Oran loam, 2 to 5 percent slopes	6.98	10.8%		lw	74	79	80	80	53	59
84	Clyde clay loam, 0 to 3 percent slopes	4.08	6.3%		llw	88	74	90	90	75	85
783C	Cresco loam, 5 to 9 percent slopes	3.51	5.4%		llle	81	46	87	87	77	85
Weighted Average						1.81	74.7	*n 86.5	*n 85.3	*n 66.6	*n 77.7

**IA has updated the CSR values for each county to CSR2.

*- CSR weighted average cannot be calculated on the current soils data, use prior data version for csr values.

*n: The aggregation method is "Weighted Average using all components"

*c: Using Capabilities Class Dominant Condition Aggregation Method

Soils data provided by USDA and NRCS.