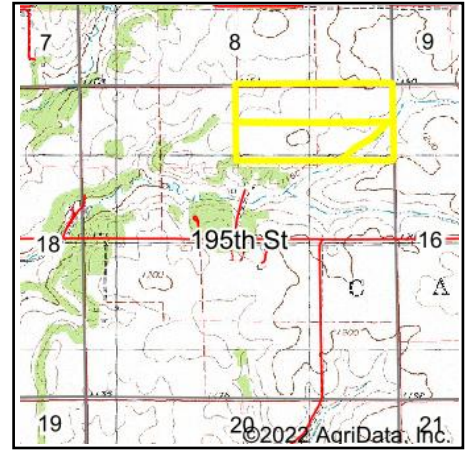
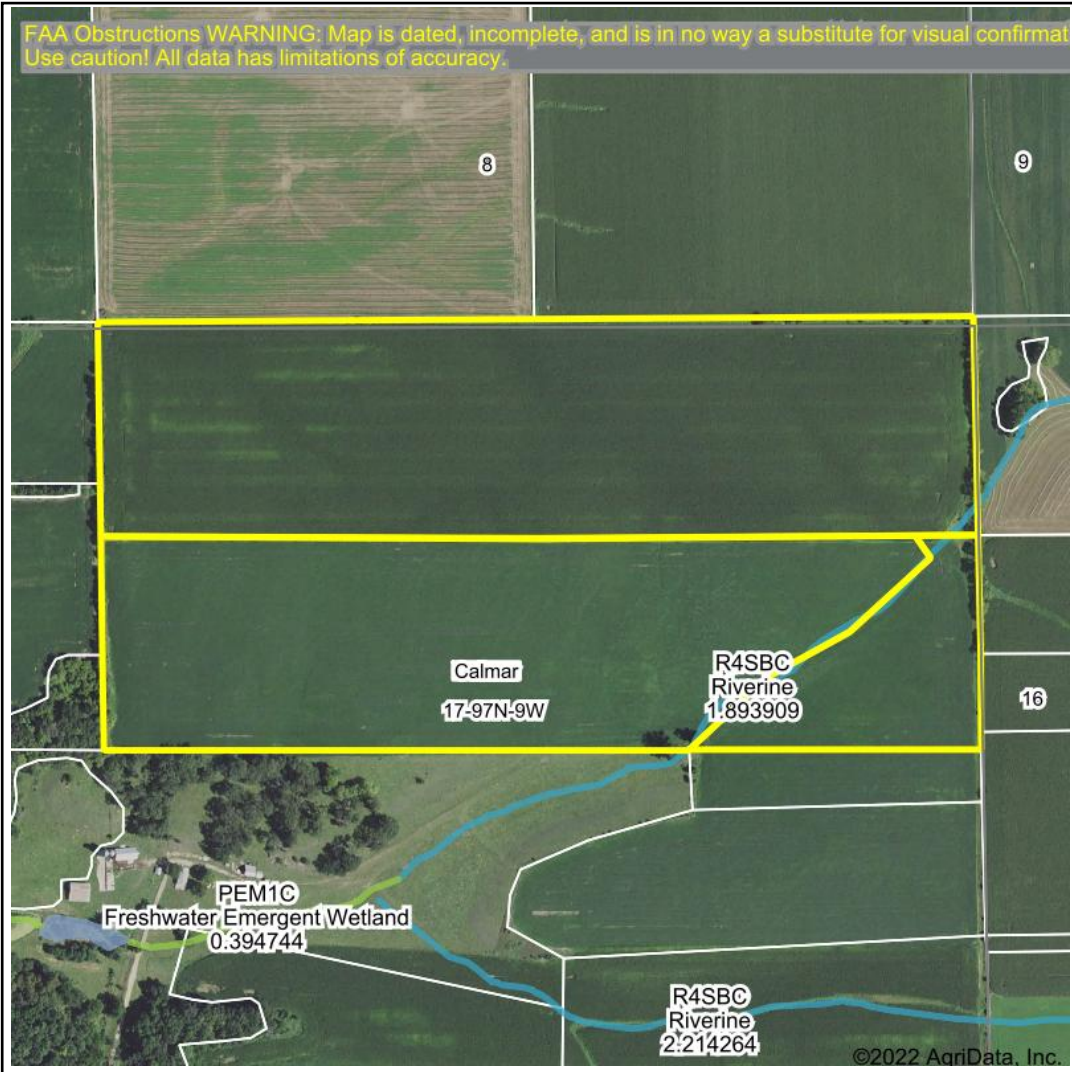


# Wetlands Map

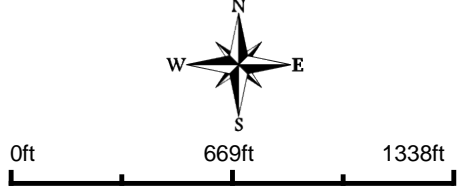
FAA Obstructions WARNING: Map is dated, incomplete, and is in no way a substitute for visual confirmation. Use caution! All data has limitations of accuracy.



**State:** Iowa  
**Location:** 17-97N-9W  
**County:** Winneshiek  
**Township:** Calmar  
**Date:** 6/13/2022


**HIGH POINT**  
 LAND COMPANY  
 Maps Provided By:  

**surety**  
 CUSTOMIZED ONLINE MAPPING  
© AgriData, Inc. 2021 www.AgriDataInc.com



Classification Code	Type	Acres
R4SBC	Riverine	0.54
Total Acres		0.54

Data Source: National Wetlands Inventory website. U.S. DoI, Fish and Wildlife Service, Washington, D.C. <http://www.fws.gov/wetlands/>

Field borders provided by Farm Service Agency as of 5/21/2008.