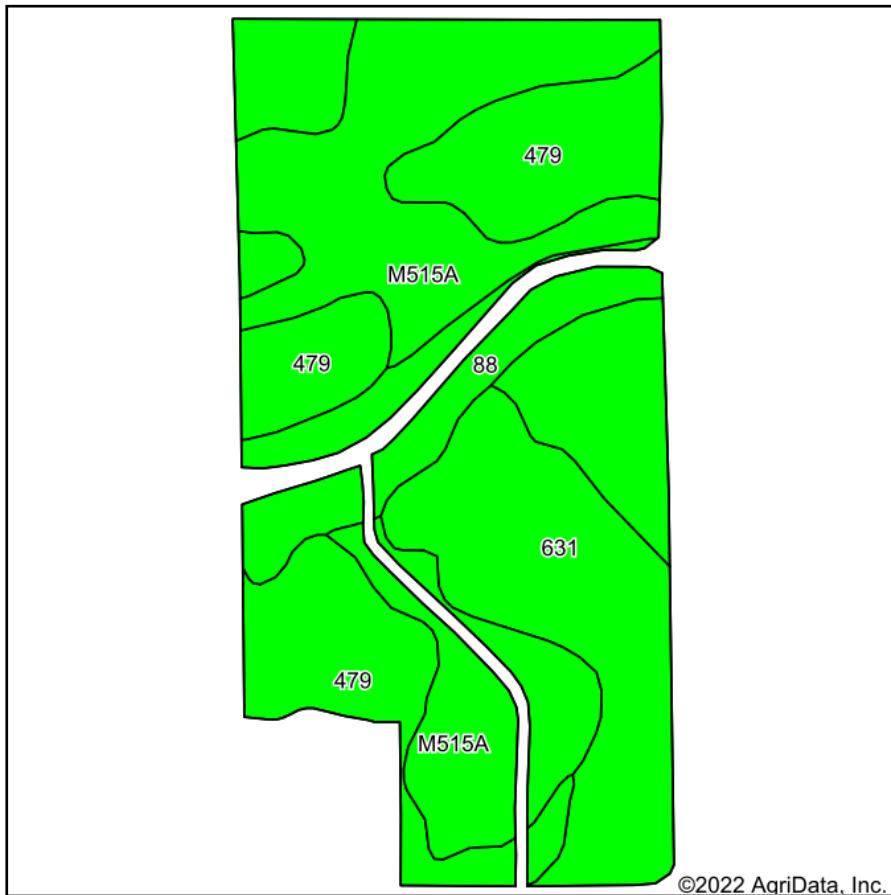
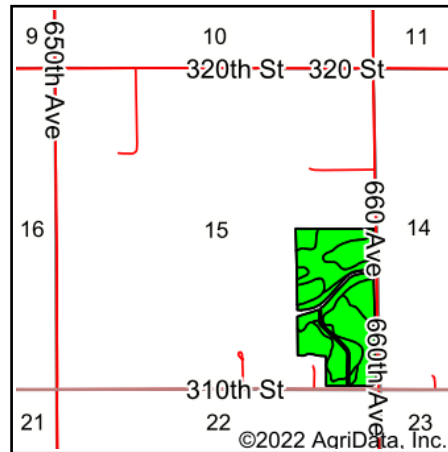


Soils Map



Soils data provided by USDA and NRCS.



State: **Minnesota**
 County: **Mower**
 Location: **15-104N-16W**
 Township: **Sargeant**
 Acres: **67.9**
 Date: **8/8/2022**



Maps Provided By:



© AgriData, Inc. 2021

www.AgriDataInc.com



Area Symbol: MN099, Soil Area Version: 17

| Code | Soil Description | Acres | Percent of field | PI Legend | Non-Irr Class *c | Productivity Index | Corn Bu | Soybeans Bu | *n NCCPI Overall | *n NCCPI Corn | *n NCCPI Small Grains | *n NCCPI Soybeans | |
|-------------------------|--|-------|------------------|-----------|------------------|--------------------|-------------|-------------|------------------|----------------|-----------------------|-------------------|----------------|
| M515A | Tripoli clay loam, 0 to 2 percent slopes | 26.95 | 39.7% | | llw | 87 | | | 67 | 67 | 44 | 62 | |
| 631 | Oran silt loam, 1 to 4 percent slopes | 17.15 | 25.3% | | lw | 95 | | | 79 | 79 | 52 | 59 | |
| 479 | Floyd silt loam, 1 to 4 percent slopes | 16.97 | 25.0% | | llw | 100 | | | 74 | 69 | 55 | 73 | |
| 88 | Clyde silty clay loam, 0 to 3 percent slopes | 6.83 | 10.1% | | llw | 86 | 193.5 | 56 | 90 | 90 | 74 | 85 | |
| Weighted Average | | | | | | 1.75 | 92.2 | 19.5 | 5.6 | *n 74.1 | *n 72.8 | *n 51.8 | *n 66.3 |

*n: The aggregation method is "Weighted Average using all components"

*c: Using Capabilities Class Dominant Condition Aggregation Method

Soils data provided by USDA and NRCS.