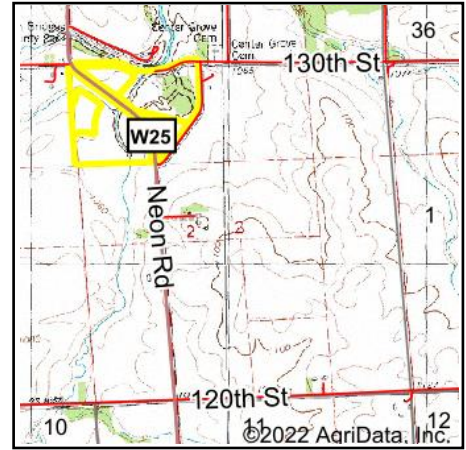
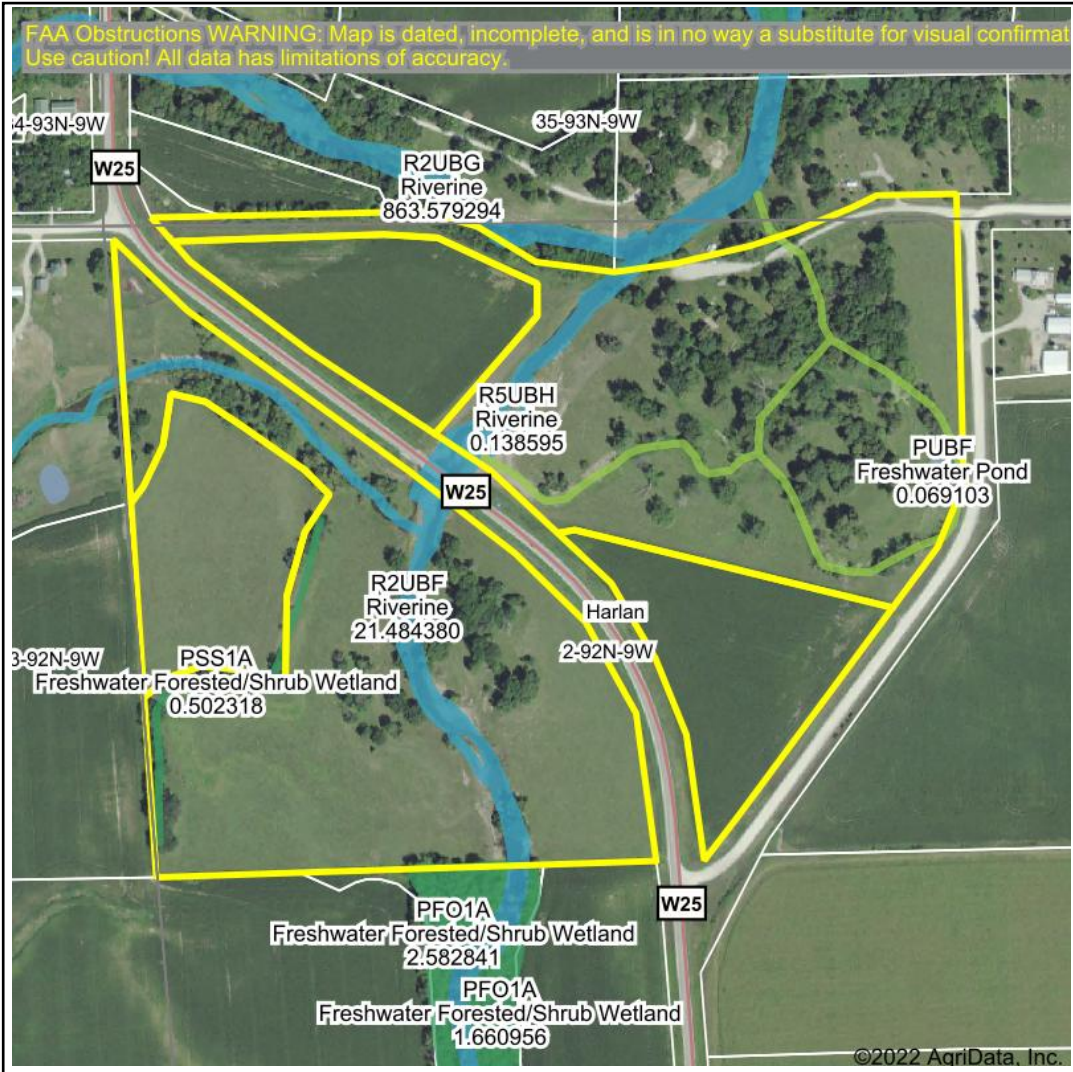


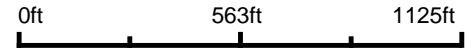
# Wetlands Map



**State:** Iowa  
**Location:** 2-92N-9W  
**County:** Fayette  
**Township:** Harlan  
**Date:** 6/13/2022


**HIGH POINT**  
 LAND COMPANY  
 Maps Provided By:  

**surety**  
 CUSTOMIZED ONLINE MAPPING  
© AgriData, Inc. 2021 www.AgriDataInc.com



Classification Code	Type	Acres
R2UBF	Riverine	2.71
PEM1C	Freshwater Emergent Wetland	1.21
PSS1A	Freshwater Forested/Shrub Wetland	0.50
R5UBH	Riverine	0.16
PUBF	Freshwater Pond	0.07
PFO1A	Freshwater Forested/Shrub Wetland	0.07
R2UBG	Riverine	0.01
Total Acres		4.73

Data Source: National Wetlands Inventory website. U.S. DoI, Fish and Wildlife Service, Washington, D.C. <http://www.fws.gov/wetlands/>

Field borders provided by Farm Service Agency as of 5/21/2008.