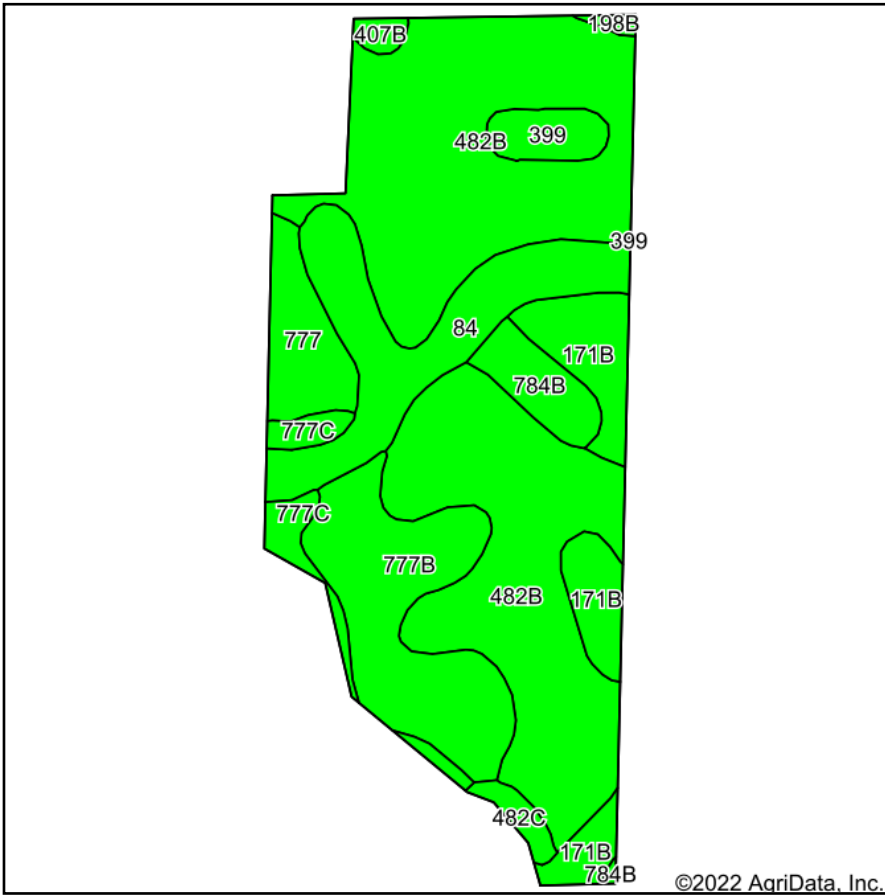
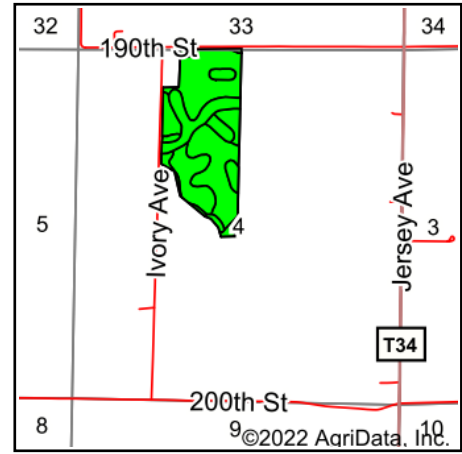


Soils Map



Soils data provided by USDA and NRCS.



State: **Iowa**
 County: **Floyd**
 Location: **4-95N-17W**
 Township: **Ulster**
 Acres: **71.2**
 Date: **2/11/2022**



Maps Provided By:



© AgriData, Inc. 2021

www.AgriDataInc.com



Area Symbol: IA067, Soil Area Version: 27

Code	Soil Description	Acres	Percent of field	CSR2 Legend	Non-Irr Class *c	CSR2**	CSR	Corn Bu	Soybeans Bu	
482B	Racine loam, 2 to 5 percent slopes	36.02	50.6%		Ile	76	79			
777B	Wapsie loam, 2 to 5 percent slopes	9.70	13.6%		Ile	48	53			
84	Clyde silty clay loam, 0 to 3 percent slopes	8.73	12.3%		IIw	88	77	193.5	56	
171B	Bassett loam, 2 to 5 percent slopes	5.90	8.3%		Ile	85	79	215	62	
777	Wapsie loam, 0 to 2 percent slopes	3.34	4.7%		IIs	51	58			
784B	Riceville silt loam, 1 to 4 percent slopes	2.32	3.3%		IIw	68	50			
777C	Wapsie loam, 5 to 9 percent slopes	2.09	2.9%		IIIle	43	33			
399	Readlyn silt loam, 1 to 3 percent slopes	1.64	2.3%		Iw	91	89			
482C	Racine loam, 5 to 9 percent slopes	0.76	1.1%		IIIle	77	64			
407B	Schley silt loam, 1 to 4 percent slopes	0.47	0.7%		IIw	81	69			
198B	Floyd loam, 1 to 4 percent slopes	0.23	0.3%		IIw	89	74			
Weighted Average						2.02	72.4	71.9	41.5	12

**IA has updated the CSR values for each county to CSR2.

*c: Using Capabilities Class Dominant Condition Aggregation Method
 Soils data provided by USDA and NRCS.