



**HIGH
POINT**

LAND COMPANY

HighPointLandCompany.com

73.83+/- Acres
Faribault County, MN
Mountain Lake Twp



High Point Land Company

28 S Broadway Wells, MN 56097

Property Photos



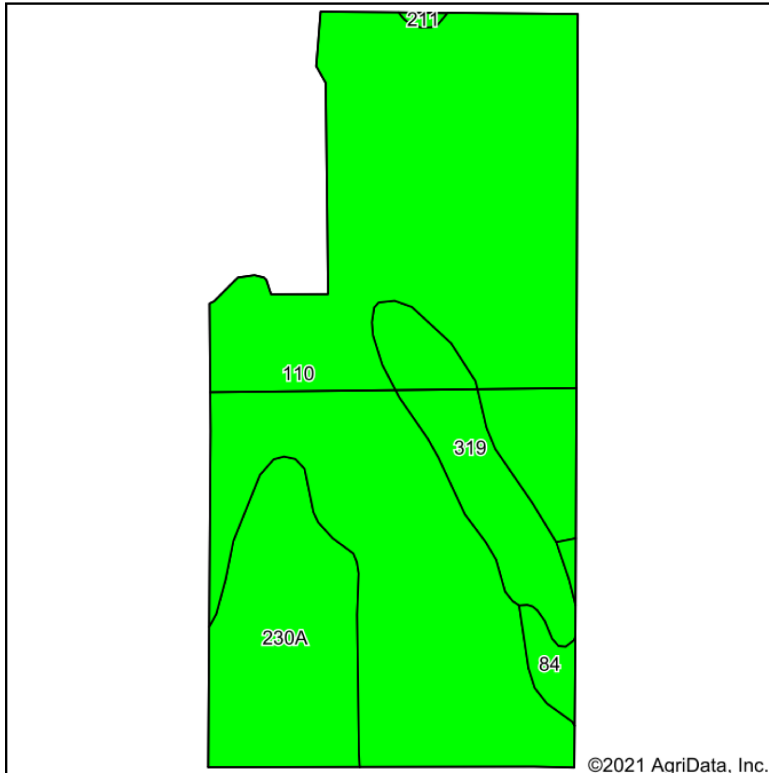
Property Photos



Aerial Map

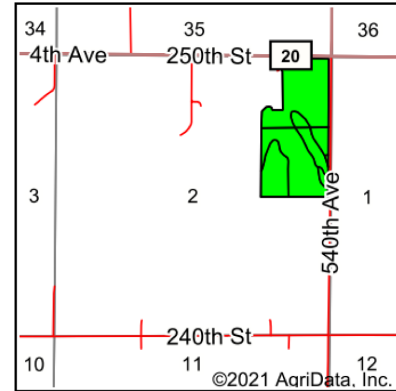


Soil Map



Soils data provided by USDA and NRCS.

©2021 AgriData, Inc.



State: **Minnesota**
 County: **Faribault**
 Location: **2-104N-25W**
 Township: **Minnesota Lake**
 Acres: **69.21**
 Date: **9/13/2021**



Maps Provided By:



© AgriData, Inc. 2021 www.AgriDataInc.com

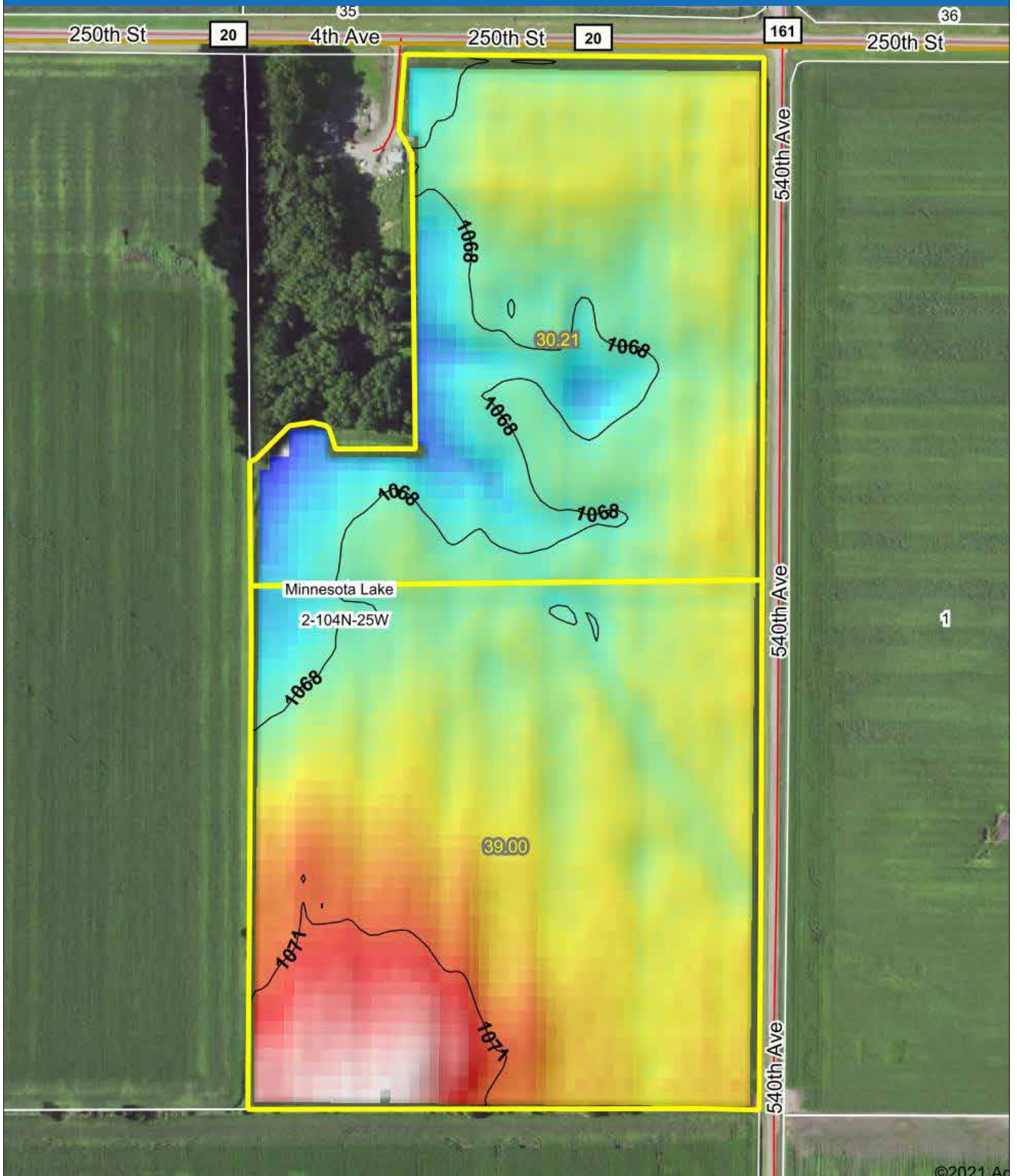


Area Symbol: MN043, Soil Area Version: 17

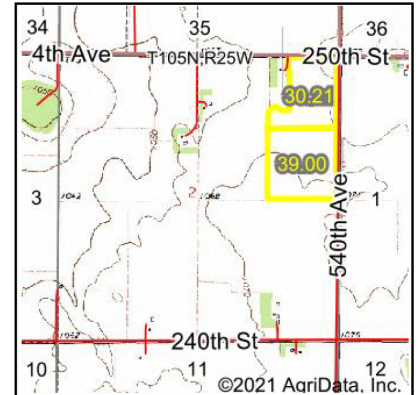
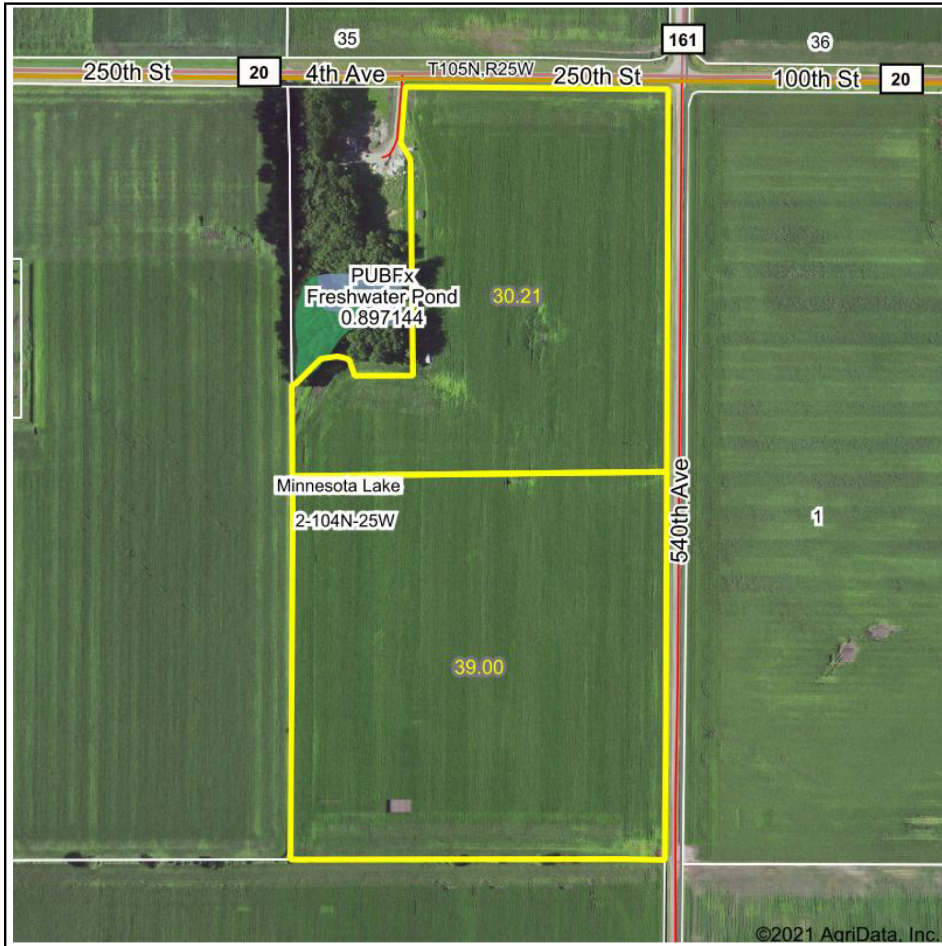
Code	Soil Description	Acres	Percent of field	PI Legend	Non-Irr Class *c	Productivity Index	Bromegrass alfalfa	Bromegrass alfalfa hay	Corn	Oats	Soybeans	Spring wheat
110	Marna silty clay loam, 0 to 2 percent slopes	50.98	73.7%		IIw	87						
230A	Guckeen silty clay loam, 1 to 3 percent slopes	10.59	15.3%		IIw	95						
319	Barbert silty clay loam	6.26	9.0%		IIIw	86	5.1	3.9	185	84	52	50
84	Brownton silty clay loam, 0 to 2 percent slopes	1.23	1.8%		IIw	81						
211	Lura silty clay, 0 to 1 percent slopes	0.15	0.2%		IIIw	81						
Weighted Average						88	0.5	0.4	16.7	7.6	4.7	4.5

*c: Using Capabilities Class Dominant Condition Aggregation Method
 Soils data provided by USDA and NRCS.

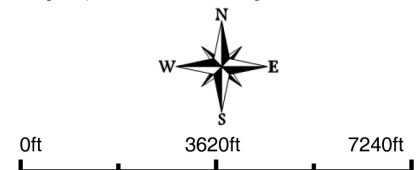
Topo Map



Wetlands Map



State: **Minnesota**
 Location: **2-104N-25W**
 County: **Faribault**
 Township: **Minnesota Lake**
 Date: **9/13/2021**



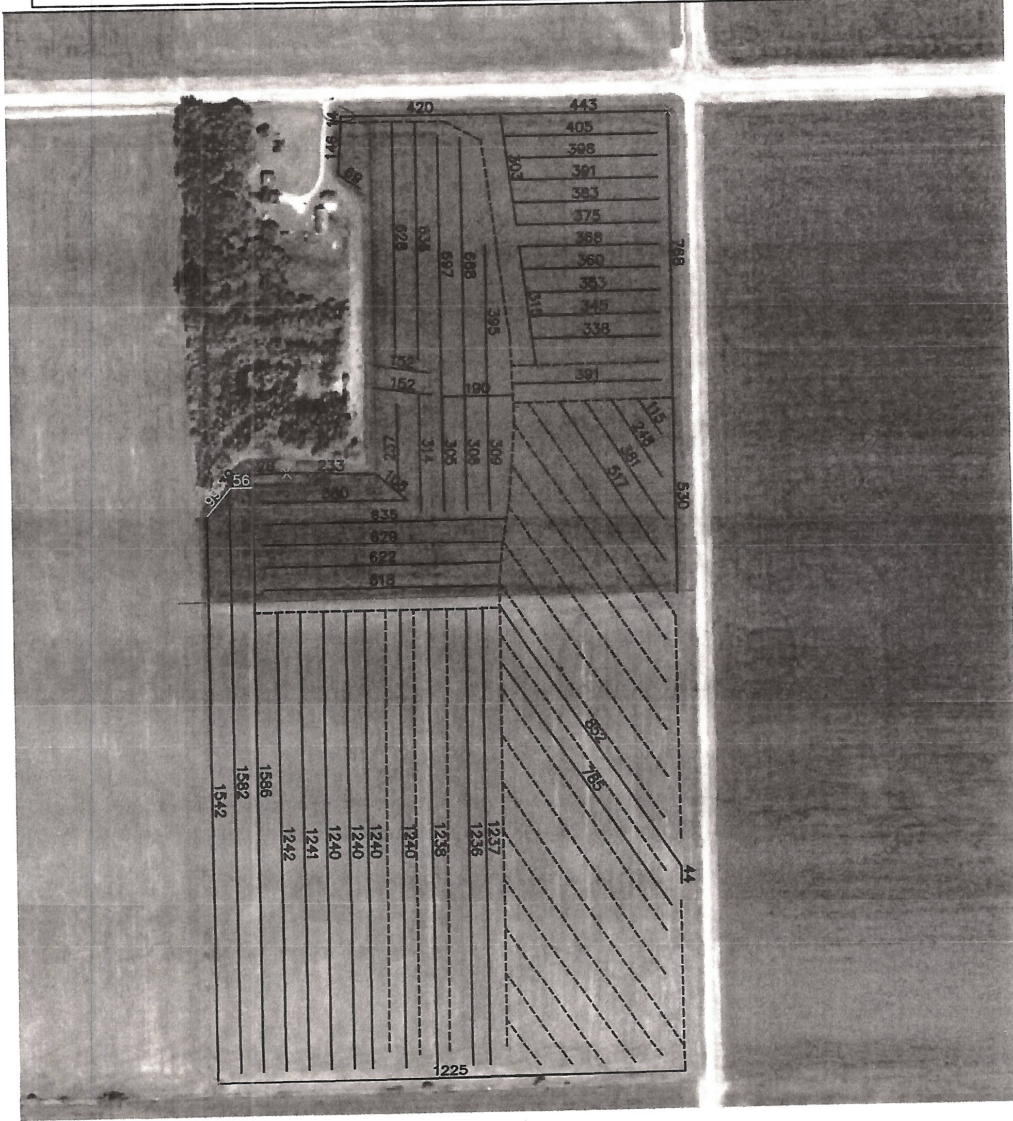
Classification Code	Type	Acres
PFO1A	Freshwater Forested/Shrub Wetland	0.03
Total Acres		0.03

Data Source: National Wetlands Inventory website. U.S. DoI, Fish and Wildlife Service, Washington, D.C. <http://www.fws.gov/wetlands/>

Tile Map

	56113 State Hwy 56 West Concord, MN 55985 507 527-2294 www.ellingsoncompanies.com		ml2ne.dwg Revision: 10-21-10 Job# 10656p Drawn by: Drew Buehler	
	<p>Existing Tile ----- 0 Ft. 3" Perf</p> <p>Ditches & WW - - - - - 35549 Ft. 4" Perf</p> <p>Parcel Boundry _____ 154 Ft. 5" Perf</p> <p>Elec & Tele Cable _____ 1300 Ft. 6" Perf</p> <p>Gas Line _____ 0 Ft. 8" Perf</p> <p>Trees 0 Ft. 10" Perf</p> <p>0 Ft. 12" Perf</p> <p>0 Ft. 15" Perf</p> <p>0 Ft. 18" Perf</p>			
		Fields, Tyler, Mike, Radtke, Darrell Renter:		
State: MN County: Faribault		Twp: Minnesota Lake		Sec: 2
Acres: 57		Spacings: 60, Splitters		D-C: 3/8

RADTKE
 SD
 TYLER



FSA-156EZ

Minnesota
Faribault

U.S. Department of Agriculture
Farm Service Agency

FARM: 9230
Prepared: 1/5/22 4:01 PM
Crop Year: 2022
Page: 1 of 2

Report ID: FSA-156EZ

Abbreviated 156 Farm Record

DISCLAIMER: This is data extracted from the web farm database. Because of potential messaging failures in MIDAS, this data is not guaranteed to be an accurate and complete representation of data contained in the MIDAS system, which is the system of record for Farm Records.

ARC/PLC G//F Eligibility: Eligible

CRP Contract Number(s): None

Farmland	Cropland	DCP Cropland	WBP	WRP	EWP	CRP Cropland	GRP	Farm Status	Number of Tracts
30.21	30.21	30.21	0.0	0.0	0.0	0.0	0.0	Active	1
State Conservation	Other Conservation	Effective DCP Cropland	Double Cropped	MPL/FWP	Native Sod				
0.0	0.0	30.21	0.0	0.0	0.0				

ARC/PLC

PLC	ARC-CO	ARC-IC	PLC-Default	ARC-CO-Default	ARC-IC-Default
NONE	CORN , SOYBN	NONE	NONE	NONE	NONE

Crop	Base Acreage	PLC Yield	CCC-505 CRP Reduction
CORN	17.7	157	0.00
SOYBEANS	12.5	46	0.00
Total Base Acres:	30.2		

Tract Number: 3280 Description NE4NE4 LESS 10AC BLDG SITE(2)MIN

FSA Physical Location : Faribault, MN ANSI Physical Location: Faribault, MN

BIA Range Unit Number:

HEL Status: NHEL: no agricultural commodity planted on undetermined fields

Wetland Status: Wetland determinations not complete

WL Violations: None

Farmland	Cropland	DCP Cropland	WBP	WRP	EWP	CRP Cropland	GRP
30.21	30.21	30.21	0.0	0.0	0.0	0.0	0.0
State Conservation	Other Conservation	Effective DCP Cropland	Double Cropped	MPL/FWP	Native Sod		
0.0	0.0	30.21	0.0	0.0	0.0		

Crop	Base Acreage	PLC Yield	CCC-505 CRP Reduction
CORN	17.7	157	0.00
SOYBEANS	12.5	46	0.00
Total Base Acres:	30.2		

FSA-156EZ

Minnesota

U.S. Department of Agriculture

FARM: 9231

Faribault

Farm Service Agency

Prepared: 1/5/22 3:59 PM

Report ID: FSA-156EZ

Abbreviated 156 Farm Record

Crop Year: 2022

DISCLAIMER: This is data extracted from the web farm database. Because of potential messaging failures in MIDAS, this data is not guaranteed to be an accurate and complete representation of data contained in the MIDAS system, which is the system of record for Farm Records.

ARC/PLC G//F Eligibility: Eligible									Recon Number
									2011 - 105
Farmland	Cropland	DCP Cropland	WBP	WRP	EWP	CRP Cropland	GRP	Farm Status	Number of Tracts
39.0	39.0	39.0	0.0	0.0	0.0	0.0	0.0	Active	1
State Conservation	Other Conservation	Effective DCP Cropland	Double Cropped	MPL/FWP	Native Sod				
0.0	0.0	39.0	0.0	0.0	0.0				
ARC/PLC									
PLC	ARC-CO	ARC-IC	PLC-Default	ARC-CO-Default	ARC-IC-Default				
NONE	CORN , SOYBN	NONE	NONE	NONE	NONE				

Crop	Base Acreage	PLC Yield	CCC-505 CRP Reduction
CORN	19.5	175	0.00
SOYBEANS	19.5	45	0.00
Total Base Acres:	39.0		

Tract Number: 10523 Description SE4NE4(2)MIN

FSA Physical Location : Faribault, MN

ANSI Physical Location: Faribault, MN

BIA Range Unit Number:

HEL Status: NHEL: no agricultural commodity planted on undetermined fields

Wetland Status: Tract does not contain a wetland

WL Violations: None

Farmland	Cropland	DCP Cropland	WBP	WRP	EWP	CRP Cropland	GRP
39.0	39.0	39.0	0.0	0.0	0.0	0.0	0.0
State Conservation	Other Conservation	Effective DCP Cropland	Double Cropped	MPL/FWP	Native Sod		
0.0	0.0	39.0	0.0	0.0	0.0		

Crop	Base Acreage	PLC Yield	CCC-505 CRP Reduction
CORN	19.5	175	0.00
SOYBEANS	19.5	45	0.00
Total Base Acres:	39.0		

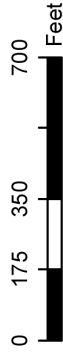


Faribault County, Minnesota

Farm 9230 Tract 3280

2021 Program Year

Map Created May 03, 2021



- Unless otherwise noted:
 Shares are 100% operator
 Crops are non-irrigated
 Corn = yellow for grain
 Soybeans = common soybeans for grain
 Wheat = HRS, HRW = Grain
 Sunflower = Oil, Non-Oil = Grain
 Oats and Barley = Spring for grain
 Rye = for grain
 Peas = process
 Alfalfa, Mixed Forage AGM, GMA, IGS = for forage
 Beans = Dry Edible
 NAG = for GZ
 Canola = Spring for seed

- Common Land Unit**
- Cropland
 - Tract Boundary

- Wetland Determination Identifiers**
- Restricted Use
 - Limited Restrictions
 - Exempt from Conservation
 - Compliance Provisions

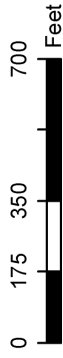
Tract Cropland Total: 30.21 acres

United States Department of Agriculture (USDA) Farm Service Agency (FSA) maps are for FSA Program administration only. This map does not represent a legal survey or reflect actual ownership; rather it depicts the information provided directly from the producer and/or National Agricultural Imagery Program (NAIP) imagery. The producer accepts the data 'as is' and assumes all risks associated with its use. USDA-FSA assumes no responsibility for actual or consequential damage incurred as a result of any user's reliance on this data outside FSA Programs. Wetland identifiers do not represent the size, shape, or specific determination of the area. Refer to your original determination (CPA-026 and attached maps) for exact boundaries and determinations or contact USDA Natural Resources Conservation Service (NRCS). This map displays the 2019 NAIP imagery.

Farm 9231
Tract 10523

2021 Program Year

Map Created May 03, 2021



- Unless otherwise noted:
 Shares are 100% operator
 Crops are non-irrigated
 Corn = yellow for grain
 Soybeans = common soybeans for grain
 Wheat = HRS, HRW = Grain
 Sunflower = Oil, Non-Oil = Grain
 Oats and Barley = Spring for grain
 Rye = for grain
 Peas = process
 Alfalfa, Mixed Forage AGM, GMA, IGS = for forage
 Beans = Dry Edible
 NAG = for GZ
 Canola = Spring for seed

Common Land Unit

- Cropland
- Tract Boundary

Wetland Determination Identifiers

- Restricted Use
- ▼ Limited Restrictions
- Exempt from Conservation Compliance Provisions

Tract Cropland Total: 39.00 acres



United States Department of Agriculture (USDA) Farm Service Agency (FSA) maps are for FSA Program administration only. This map does not represent a legal survey or reflect actual ownership; rather it depicts the information provided directly from the producer and/or National Agricultural Imagery Program (NAIP) imagery. The producer accepts the data 'as is' and assumes all risks associated with its use. USDA-FSA assumes no responsibility for actual or consequential damage incurred as a result of any user's reliance on this data outside FSA Programs. Wetland identifiers do not represent the size, shape, or specific determination of the area. Refer to your original determination (CPA-026 and attached maps) for exact boundaries and determinations or contact USDA Natural Resources Conservation Service (NRCS). This map displays the 2019 NAIP imagery.

Listing Summary

73.83+/- Acres Faribault County, MN

High Point Land Company is pleased to offer this 73.83+/- acre tract of tillable farmland located in Minnesota Lake Township in Faribault County MN. This highly productive property features great access, fully patterned tiling and would be perfect for any operator looking to add to their tillable acres or for investors alike. This tremendous piece of tillable ground generates a strong CPI of 88 across the entirety. A piece of fully tilled land like this doesn't come on the market often in this area.

If you are interested in this property or would like to set up a private showing, contact Minnesota Land Specialist Mitchell Kruger at 507-259-8541 or email him at mitchell@highpointlandcompany.com.

High Point Land Company
28 S Broadway Wells, MN 56097



28 S Broadway
Wells, MN 56097



“We sell farms, it’s what we know, what we do, and where we belong. We specialize in land and farm transactions that most likely will be our client’s largest financial transactions of their lives. It’s our job to get it done right.”



CONTACT LAND AGENT:
Mitchell Kruger
507-259-8541
Mitchell@highpointlandcompany.com