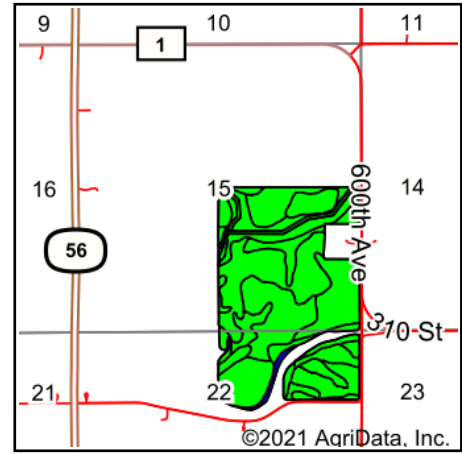
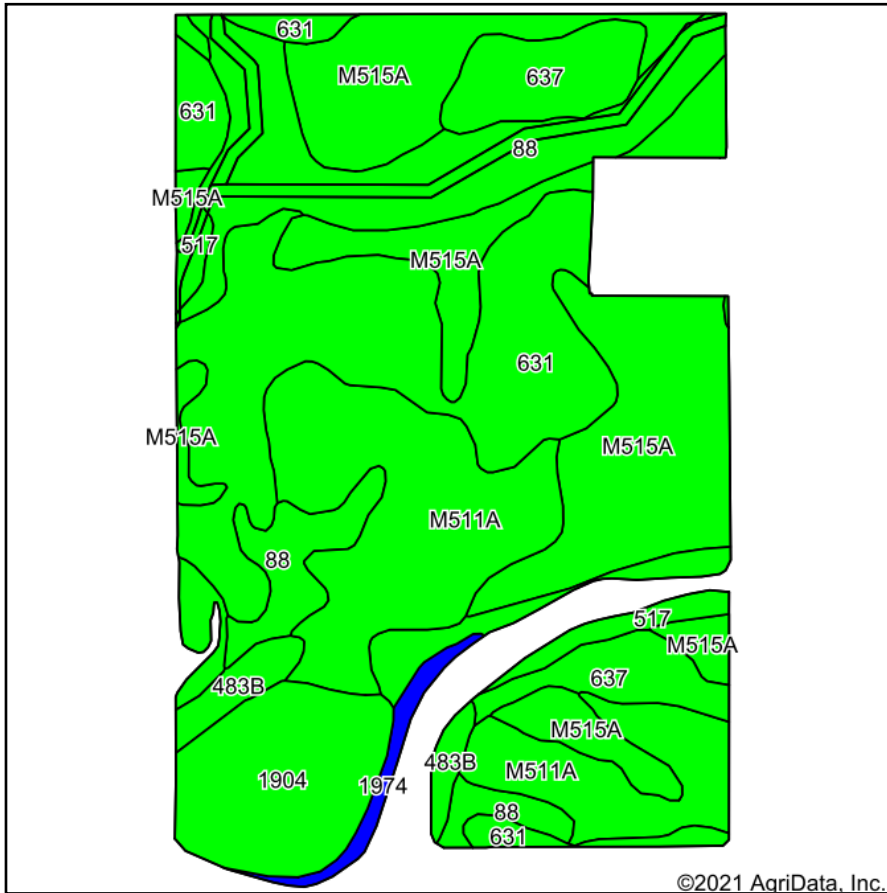


# Soils Map



State: **Minnesota**  
 County: **Mower**  
 Location: **15-104N-17W**  
 Township: **Waltham**  
 Acres: **218.3**  
 Date: **8/5/2021**



Maps Provided By:



Soils data provided by USDA and NRCS.

©2021 AgriData, Inc.

© AgriData, Inc. 2021

www.AgriDataInc.com

Area Symbol: MN099, Soil Area Version: 16

Code	Soil Description	Acres	Percent of field	PI Legend	Non-Irr Class *c	Productivity Index	Alfalfa hay	Bromegrass alfalfa	Bromegrass alfalfa hay	Canarygrass hay	Canarygrass ladino	Corn	Corn silage	Kentucky bluegrass
M515A	Tripoli clay loam, 0 to 2 percent slopes	54.97	25.2%		llw	87								
631	Oran silt loam, 1 to 4 percent slopes	45.01	20.6%		lw	95								
M511A	Readlyn silt loam, 1 to 3 percent slopes	39.25	18.0%		lw	100								
88	Clyde silty clay loam, 0 to 3 percent slopes	31.51	14.4%		llw	86	4.4	7	4.2	3		193.5	18	
1904	Udolpho silt loam, loamy substratum	16.70	7.7%		llw	70			4.2		6.4	151	16	
637	Schley silt loam	13.85	6.3%		llw	84		8.9	4.8			181		
517	Shandep clay loam	10.13	4.6%		lllw	78		4.8	3.7			168		
483B	Waukee loam, 2 to 5 percent slopes	4.36	2.0%		lls	66								
1974	Coland, frequently flooded-Spillville, occasionally flooded complex, 0 to 2 percent slopes	2.52	1.2%		Vw	31								
<b>Weighted Average</b>						<b>87.9</b>	<b>0.6</b>	<b>1.8</b>	<b>1.4</b>	<b>0.4</b>	<b>0.5</b>	<b>58.8</b>	<b>3.8</b>	

\*c: Using Capabilities Class Dominant Condition Aggregation Method  
 Soils data provided by USDA and NRCS.