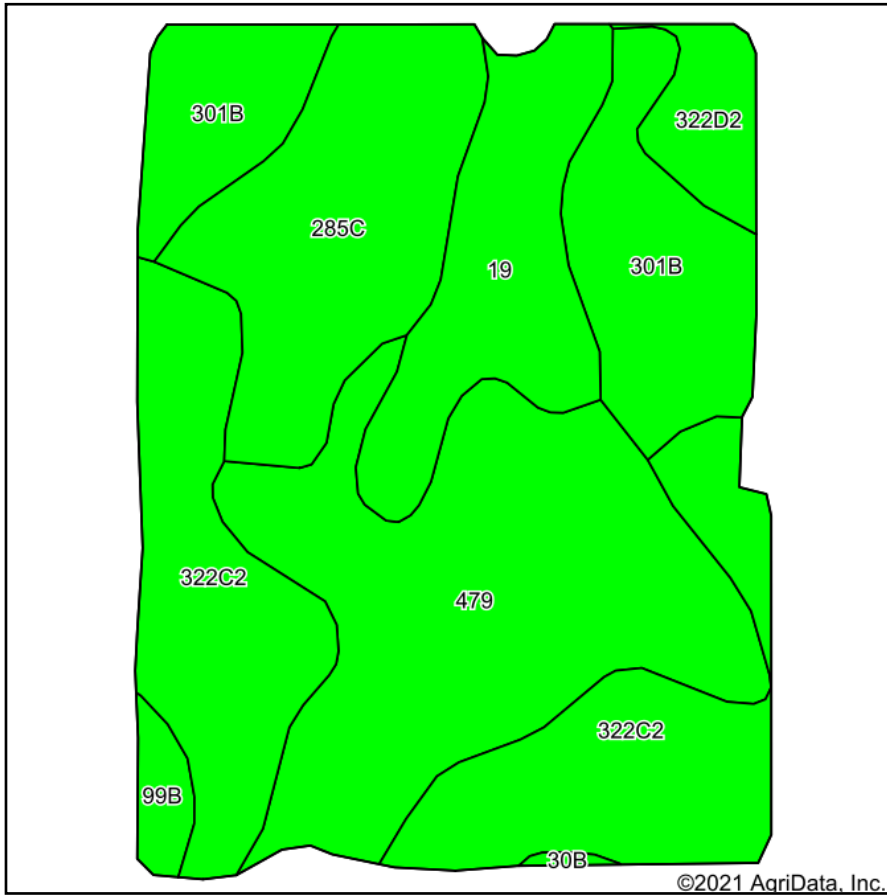
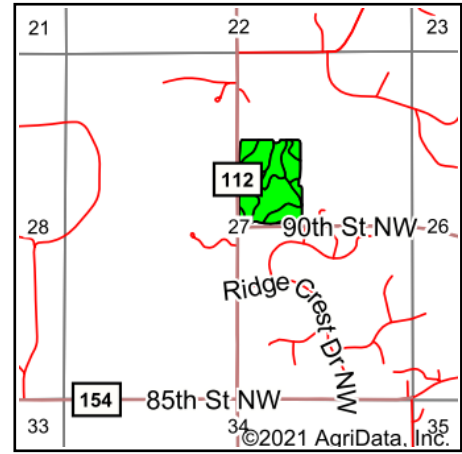


Soils Map



Soils data provided by USDA and NRCS.



State: **Minnesota**
 County: **Olmsted**
 Location: **27-108N-14W**
 Township: **Oronoco**
 Acres: **26.82**
 Date: **8/2/2021**



Maps Provided By:



© AgriData, Inc. 2021

www.AgriDataInc.com



Area Symbol: MN109, Soil Area Version: 15

Code	Soil Description	Acres	Percent of field	PI Legend	Non-Irr Class *c	Productivity Index	Bromegrass alfalfa	Bromegrass alfalfa hay	Corn	Kentucky bluegrass	Oats	Smooth bromegrass	Soybeans
479	Floyd silt loam, 1 to 4 percent slopes	7.47	27.9%		Ilw	100							
322C2	Timula silt loam, 6 to 12 percent slopes, moderately eroded	6.96	26.0%		Ille	78							
285C	Port Byron silt loam, 6 to 12 percent slopes, moderately eroded	4.07	15.2%		Ille	91							
301B	Lindstrom silt loam, 2 to 6 percent slopes	4.02	15.0%		Ile	99		6.2	204		90		59
19	Chaseburg silt loam, moderately well drained, 0 to 2 percent slopes	3.00	11.2%		Ilw	92							
322D2	Timula silt loam, 12 to 20 percent slopes, moderately eroded	0.89	3.3%		Ive	64							
99B	Racine loam, 2 to 5 percent slopes	0.41	1.5%		Ile	91							

Maps Provided By:



© AgriData, Inc. 2021

www.AgriDataInc.com

Weighted Average	90.5	*-	0.9	30.6	*-	13.5	*-	8.8
-------------------------	-------------	-----------	------------	-------------	-----------	-------------	-----------	------------

*c: Using Capabilities Class Dominant Condition Aggregation Method
Soils data provided by USDA and NRCS.